

**AMENDMENT NO. 5 TO AGREEMENT DATED FEBRUARY 26, 219
BETWEEN PICTOMETRY INTERNATIONAL CORP.
AND UNION COUNTY, NC**

1. This Amendment, including all Sections and Appendices referenced herein (collectively, this “Amendment”) is entered into by and between Pictometry International Corp. and its affiliates, also dba EagleView, (“EagleView”) and Union County, NC (“Customer”), and supplements and modifies the terms of the Agreement dated February 26, 2019 as, to the extent applicable, previously modified by addenda or amendments thereto (collectively, the “Agreement”). Any purchase order or similar document issued by Customer in connection with this Amendment is issued solely for Customer’s internal administrative purposes and the terms and conditions set forth on such purchase order shall be of no force or effect as between the parties. To the extent that there is any inconsistency between the terms set forth in this Amendment and those set forth in the Agreement, the terms set forth in this Amendment shall prevail.
2. MODIFICATIONS TO AGREEMENT:
 - a) The products, pricing, product parameters and payment schedule pertaining to the **First, Second, Third, Fourth, Fifth, and Sixth Projects** set forth in Section A of this Amendment shall be added to the Agreement.
 - b) The Map attached to this Amendment shall be added to the Agreement.
 - c) All other terms and conditions set forth in the Agreement shall remain in full force and effect.

This Amendment is hereby accepted and agreed to by the undersigned parties and shall become effective upon the last date of execution by each Customer and EagleView (the “Effective Date”).

PARTIES:

CUSTOMER	EAGLEVIEW
UNION COUNTY, NC	PICTOMETRY INTERNATIONAL CORP.
	A Delaware Corporation
SIGNATURE:	SIGNATURE:
NAME: Brian W. Matthews	NAME:
TITLE: County Manager	TITLE:
EXECUTION DATE:	EXECUTION DATE:

Approved as to Legal Form:CJB

This Instrument Has Been Preaudited In The
Manner Required By The Local Government
Budget And Fiscal Control Act

Deputy Finance Officer

SECTION A**PRODUCT DESCRIPTIONS, PRICES AND PAYMENT TERMS**

Pictometry International Corp.
25 Methodist Hill Drive
Rochester, NY 14623

ORDER #

LC-10008819

BILL TO

Union County, NC
Bryan McFadden
500 N. Main St
Monroe, North Carolina 28112
(704)283-3746
bryan.mcfadden@unioncountync.gov

SHIP TO

Union County, NC
Bryan McFadden
500 N. Main St
Monroe, North Carolina 28112
(704)283-3746
bryan.mcfadden@unioncountync.gov

CUSTOMER ID

A1227086

SALES REP

Joseph Wilson

FREQUENCY OF PROJECT(S)

Annual

PROJECT 1

QTY	PRODUCT NAME	PRODUCT DESCRIPTION	LIST PRICE	DISCOUNT PRICE %	AMOUNT ¹
1	Oblique Support Bundle	Includes digital copy of the Licensed Documentation for the License Software, one, two, or three hour End User Training Sessions, one (1) Advanced User Technical Training, one (1) Administration / IT Training Session, five, ten, or fifteen hours of telephone support, one copy of Pictometry Electronic Field Study (EFS) software, latest version, on the storage media specified herein, and access to download updated versions of the EFS Licensed Software for a period of one, two, or three years from the initial date of shipment of the EFS software, along with a copy of the updated documentation.	\$ 0.00		\$ 0.00
1	Pictometry Connect - EarlyAccess	Pictometry Connect - EarlyAccess provides authorized users the ability to login and access the imagery, as specified elsewhere in this agreement, immediately following its preliminary processing and quality control checks and prior to its final processing. Early Access imagery will become available in CONNECT Explorer incrementally as it is processed and it will remain available until final, fully processed imagery is made available through other means. This offering requires an active Pictometry CONNECT account and the current purchase of access to an imagery product. Product Parameters: Server Integration: Third-Party Integrator: Domain URL:	\$ 10,500.00	100%	\$ 0.00
1	Pictometry Connect View - CA	Pictometry Connect View - CA (Custom Access) provides visualization-only access to the Pictometry-hosted custom imagery libraries specified elsewhere in this Agreement via a web application or server based integration. Requires a customer-provided web application or server based application. With respect to imagery available through this product to third parties or the Public, Pictometry reserves the right to reduce the resolution of the imagery available. Term commences on date of activation. The quantity represents the number of years in the Connect term. Product Parameters: Admin User: Bryan McFadden Admin User Email: bryan.mcfadden@unioncountync.gov	\$ 790.00	57.24%	\$ 337.80

1	Pictometry Connect - CA - 250	<p>Pictometry Connect - CA - 250 (Custom Access) provides up to 250 concurrent authorized users the ability to login and access the Pictometry-hosted custom imagery libraries specified elsewhere in this Agreement via a web-based, server-based or desktop integration. The default deployment is through web-based Pictometry Connect. Term commences on date of activation. The quantity represents the number of years in the Connect term.</p> <p>Product Parameters: Admin User: Bryan McFadden Admin User Email: bryan.mcfadden@unioncountync.gov</p>	\$ 10,500.00	40%	\$ 6,300.00
696	IMAGERY - Reveal 1000 - R2 per square mile	<p>Product includes: 0.75-inch (or better) GSD orthogonal images and 1-inch (or better) oblique images (4-way), available online via an active CONNECT account (purchased separately).</p> <p>Product Parameters: Elevation Data Source: Public Avail - NED/USGS/GeoBase Leaf: Leaf Off: Less than 30% leaf cover</p>	\$ 795.00	65%	\$ 193,662.00
1	CONNECT ImageService CA	<p>Provides access via a secure web mapping service to existing orthomosaics available within Customer's Connect account. This service allows for unlimited image request transactions pursuant to this Agreement. EagleView may review the usage and, in EagleView's sole discretion, limit further access by Customer to the Connect Image Service based on fair usage and bandwidth restrictions. The orthomosaic imagery provided by this service may be used on Customer's public and internal websites and applications as a basemap layer. The image service application including any links or API keys provided by EagleView may not be shared with users outside of the customer's organization. Customer must maintain an active paid EagleView Connect account in order to utilize the Connect Image Service.</p> <p>Product Parameters: Elevation Data Source: Public Avail - NED/USGS/GeoBase Leaf: Leaf Off: Less than 30% leaf cover</p>	\$ 2,099.00	100%	\$ 0.00
1	FutureView Adv Training	<p>Full conference registration to advanced training designed to maximize deployment. Includes hotel room for up to three nights, event registration, and round-trip airfare up to \$500. Customer will be provided with discount code to complete FutureView registration. (Air Travel Restrictions - 30 day advance purchase for airfare, per person round trip airfare at standard coach class rates through Pictometry's travel provider only.) Must be redeemed within three years of agreement execution date.</p>	\$ 3,195.00		\$ 3,195.00
1	RapidAccess - Disaster Response Program	<p>RapidAccess - Disaster Response Program is an emergency response program offering flights after an emergency or disaster. Refer to the attached detailed description of the Disaster Response Program. Term commences on date of initial shipment of imagery for a project. The quantity represents the number of years in the DRP term.</p>	\$ 0.00		\$ 0.00
SUBTOTAL - THIS AMENDMENT					\$203,494.80

PROJECT 2					
QTY	PRODUCT NAME	PRODUCT DESCRIPTION	LIST PRICE	DISCOUNT PRICE %	AMOUNT ¹
1	CONNECT ImageService CA	Provides access via a secure web mapping service to existing orthomosaics available within Customer's Connect	\$ 2,099.00	100%	\$ 0.00

		<p>account. This service allows for unlimited image request transactions pursuant to this Agreement. EagleView may review the usage and, in EagleView's sole discretion, limit further access by Customer to the Connect Image Service based on fair usage and bandwidth restrictions. The orthomosaic imagery provided by this service may be used on Customer's public and internal websites and applications as a basemap layer. The image service application including any links or API keys provided by EagleView may not be shared with users outside of the customer's organization. Customer must maintain an active paid EagleView Connect account in order to utilize the Connect Image Service.</p> <p>Product Parameters: Elevation Data Source: Public Avail - NED/USGS/GeoBase Leaf: Leaf Off: Less than 30% leaf cover</p>			
1	FutureView Adv Training	Full conference registration to advanced training designed to maximize deployment. Includes hotel room for up to three nights, event registration, and round-trip airfare up to \$500. Customer will be provided with discount code to complete FutureView registration. (Air Travel Restrictions - 30 day advance purchase for airfare, per person round trip airfare at standard coach class rates through Pictometry's travel provider only.) Must be redeemed within three years of agreement execution date.	\$ 3,195.00		\$ 3,195.00
1	ChangeFinder - Project Fee	<p>This is a flat fee per project. One project set-up fee is required for each Change Detection, Change Detection and Building Outlines, or Building Outline line item in the order.</p> <p>Product Parameters: Source One: Source One Year Source Two: Source Two Year: Deck Identification Method: To Be Used in Connect Assessment: Modified Technical Specification:</p>	\$ 1,100.00	100%	\$ 0.00
111000	ChangeFinder - Change Detection; Digital Parcel File Provided	<p>Existing building outlines from a specified older imagery source are updated and classified relative to the most-nadir single-frame orthogonal image in a specified, newer Pictometry imagery source. Pictometry delivers updated digital building outlines from the newer imagery source and their classification attributes in shapefile and geodatabase formats. Coverage includes only locations specified in a single, customer-provided digital parcel shapefile. Parcels in the specified locations must be generally contiguous. All Pictometry imagery to be used must be licensed or owned by the customer. Final invoiced amount will be adjusted for the actual quantity of records in the parcel file used for production. Use of older non-Pictometry-sourced building outline data requires acceptance in advance.</p> <p>Product Parameters: Source One: Pictometry Outlines Source One Year 2022 Source Two: Pictometry Imagery Source Two Year: 2025 Deck Identification Method: Included in Building Outlines To Be Used in Connect Assessment: Yes (Must be ordered as a separate line item) Modified Technical Specification:</p>	\$ 0.47	31.91%	\$ 35,520.00

696	IMAGERY - Reveal 1000 - R2 per square mile	Product includes: 0.75-inch (or better) GSD orthogonal images and 1-inch (or better) oblique images (4-way), available online via an active CONNECT account (purchased separately). Product Parameters: Elevation Data Source: Public Avail - NED/USGS/GeoBase Leaf: Leaf Off: Less than 30% leaf cover	\$ 795.00	65%	\$ 193,662.00
1	RapidAccess - Disaster Response Program	RapidAccess - Disaster Response Program is an emergency response program offering flights after an emergency or disaster. Refer to the attached detailed description of the Disaster Response Program. Term commences on date of initial shipment of imagery for a project. The quantity represents the number of years in the DRP term.	\$ 0.00		\$ 0.00
1	Oblique Support Bundle	Includes digital copy of the Licensed Documentation for the License Software, one, two, or three hour End User Training Sessions, one (1) Advanced User Technical Training, one (1) Administration / IT Training Session, five, ten, or fifteen hours of telephone support, one copy of Pictometry Electronic Field Study (EFS) software, latest version, on the storage media specified herein, and access to download updated versions of the EFS Licensed Software for a period of one, two, or three years from the initial date of shipment of the EFS software, along with a copy of the updated documentation.	\$ 0.00		\$ 0.00
1	Pictometry Connect - EarlyAccess	Pictometry Connect - EarlyAccess provides authorized users the ability to login and access the imagery, as specified elsewhere in this agreement, immediately following its preliminary processing and quality control checks and prior to its final processing. Early Access imagery will become available in CONNECT Explorer incrementally as it is processed and it will remain available until final, fully processed imagery is made available through other means. This offering requires an active Pictometry CONNECT account and the current purchase of access to an imagery product. Product Parameters: Server Integration: Third-Party Integrator: Domain URL:	\$ 10,500.00	100%	\$ 0.00
1	Pictometry Connect View - CA	Pictometry Connect View - CA (Custom Access) provides visualization-only access to the Pictometry-hosted custom imagery libraries specified elsewhere in this Agreement via a web application or server based integration. Requires a customer-provided web application or server based application. With respect to imagery available through this product to third parties or the Public, Pictometry reserves the right to reduce the resolution of the imagery available. Term commences on date of activation. The quantity represents the number of years in the Connect term. Product Parameters: Admin User: Bryan McFadden Admin User Email: bryan.mcfadden@unioncountync.gov	\$ 790.00	57.24%	\$ 337.80
1	Pictometry Connect - CA - 250	Pictometry Connect - CA - 250 (Custom Access) provides up to 250 concurrent authorized users the ability to login and access the Pictometry-hosted custom imagery libraries specified elsewhere in this Agreement via a web-based, server-based or desktop integration. The default deployment is through web-based Pictometry Connect.	\$ 10,500.00	40%	\$ 6,300.00

		Term commences on date of activation. The quantity represents the number of years in the Connect term. Product Parameters: Admin User: Bryan McFadden Admin User Email: bryan.mcfadden@unioncountync.gov			
SUBTOTAL - THIS AMENDMENT					\$239,014.80

PROJECT 3					
QTY	PRODUCT NAME	PRODUCT DESCRIPTION	LIST PRICE	DISCOUNT PRICE %	AMOUNT ¹
696	IMAGERY - Reveal 1000 - R2 per square mile	Product includes: 0.75-inch (or better) GSD orthogonal images and 1-inch (or better) oblique images (4-way), available online via an active CONNECT account (purchased separately). Product Parameters: Elevation Data Source: Public Avail - NED/USGS/GeoBase Leaf: Leaf Off: Less than 30% leaf cover	\$ 795.00	65%	\$ 193,662.00
1	RapidAccess - Disaster Response Program	RapidAccess - Disaster Response Program is an emergency response program offering flights after an emergency or disaster. Refer to the attached detailed description of the Disaster Response Program. Term commences on date of initial shipment of imagery for a project. The quantity represents the number of years in the DRP term.	\$ 0.00		\$ 0.00
1	Oblique Support Bundle	Includes digital copy of the Licensed Documentation for the License Software, one, two, or three hour End User Training Sessions, one (1) Advanced User Technical Training, one (1) Administration / IT Training Session, five, ten, or fifteen hours of telephone support, one copy of Pictometry Electronic Field Study (EFS) software, latest version, on the storage media specified herein, and access to download updated versions of the EFS Licensed Software for a period of one, two, or three years from the initial date of shipment of the EFS software, along with a copy of the updated documentation.	\$ 0.00		\$ 0.00
1	Pictometry Connect - EarlyAccess	Pictometry Connect - EarlyAccess provides authorized users the ability to login and access the imagery, as specified elsewhere in this agreement, immediately following its preliminary processing and quality control checks and prior to its final processing. Early Access imagery will become available in CONNECT Explorer incrementally as it is processed and it will remain available until final, fully processed imagery is made available through other means. This offering requires an active Pictometry CONNECT account and the current purchase of access to an imagery product. Product Parameters: Server Integration: Third-Party Integrator: Domain URL:	\$ 10,500.00	100%	\$ 0.00
1	Pictometry Connect View - CA	Pictometry Connect View - CA (Custom Access) provides visualization-only access to the Pictometry-hosted custom imagery libraries specified elsewhere in this Agreement via a web application or server based integration. Requires a customer-provided web application or server based application. With respect to imagery available through this product to third parties or the Public, Pictometry reserves the right to reduce the resolution of the imagery available. Term commences on date of activation. The quantity represents the number of years in the Connect term.	\$ 790.00	57.24%	\$ 337.80

		Product Parameters: Admin User: Bryan McFadden Admin User Email: bryan.mcfadden@unioncountync.gov			
1	Pictometry Connect - CA - 250	Pictometry Connect - CA - 250 (Custom Access) provides up to 250 concurrent authorized users the ability to login and access the Pictometry-hosted custom imagery libraries specified elsewhere in this Agreement via a web-based, server-based or desktop integration. The default deployment is through web-based Pictometry Connect. Term commences on date of activation. The quantity represents the number of years in the Connect term. Product Parameters: Admin User: Bryan McFadden Admin User Email: bryan.mcfadden@unioncountync.gov	\$ 10,500.00	40%	\$ 6,300.00
1	CONNECT ImageService CA	Provides access via a secure web mapping service to existing orthomosaics available within Customer's Connect account. This service allows for unlimited image request transactions pursuant to this Agreement. EagleView may review the usage and, in EagleView's sole discretion, limit further access by Customer to the Connect Image Service based on fair usage and bandwidth restrictions. The orthomosaic imagery provided by this service may be used on Customer's public and internal websites and applications as a basemap layer. The image service application including any links or API keys provided by EagleView may not be shared with users outside of the customer's organization. Customer must maintain an active paid EagleView Connect account in order to utilize the Connect Image Service. Product Parameters: Elevation Data Source: Public Avail - NED/USGS/GeoBase Leaf: Leaf Off: Less than 30% leaf cover	\$ 2,099.00	100%	\$ 0.00
1	FutureView Adv Training	Full conference registration to advanced training designed to maximize deployment. Includes hotel room for up to three nights, event registration, and round-trip airfare up to \$500. Customer will be provided with discount code to complete FutureView registration. (Air Travel Restrictions - 30 day advance purchase for airfare, per person round trip airfare at standard coach class rates through Pictometry's travel provider only.) Must be redeemed within three years of agreement execution date.	\$ 3,195.00		\$ 3,195.00
SUBTOTAL - THIS AMENDMENT					\$203,494.80

PROJECT 4					
QTY	PRODUCT NAME	PRODUCT DESCRIPTION	LIST PRICE	DISCOUNT PRICE %	AMOUNT ¹
111000	ChangeFinder - Change Detection; Digital Parcel File Provided	Existing building outlines from a specified older imagery source are updated and classified relative to the most-nadir single-frame orthogonal image in a specified, newer Pictometry imagery source. Pictometry delivers updated digital building outlines from the newer imagery source and their classification attributes in shapefile and geodatabase formats. Coverage includes only locations specified in a single, customer-provided digital parcel shapefile. Parcels in the specified locations must be generally contiguous. All Pictometry imagery to be used must be licensed or owned by the customer. Final invoiced amount will be adjusted for the actual quantity of records in the parcel file used for production. Use of older non-	\$ 0.47	31.91%	\$ 35,520.00

		<p>Pictometry-sourced building outline data requires acceptance in advance.</p> <p>Product Parameters: Source One: Pictometry Outlines Source One Year 2025 Source Two: Pictometry Imagery Source Two Year: 2027 Deck Identification Method: Included in Building Outlines To Be Used in Connect Assessment: Yes (Must be ordered as a separate line item) Modified Technical Specification:</p>			
696	IMAGERY - Reveal 1000 - R2 per square mile	<p>Product includes: 0.75-inch (or better) GSD orthogonal images and 1-inch (or better) oblique images (4-way), available online via an active CONNECT account (purchased separately).</p> <p>Product Parameters: Elevation Data Source: Public Avail - NED/USGS/GeoBase Leaf: Leaf Off: Less than 30% leaf cover</p>	\$ 795.00	65%	\$ 193,662.00
1	RapidAccess - Disaster Response Program	<p>RapidAccess - Disaster Response Program is an emergency response program offering flights after an emergency or disaster. Refer to the attached detailed description of the Disaster Response Program. Term commences on date of initial shipment of imagery for a project. The quantity represents the number of years in the DRP term.</p>	\$ 0.00		\$ 0.00
1	Oblique Support Bundle	<p>Includes digital copy of the Licensed Documentation for the License Software, one, two, or three hour End User Training Sessions, one (1) Advanced User Technical Training, one (1) Administration / IT Training Session, five, ten, or fifteen hours of telephone support, one copy of Pictometry Electronic Field Study (EFS) software, latest version, on the storage media specified herein, and access to download updated versions of the EFS Licensed Software for a period of one, two, or three years from the initial date of shipment of the EFS software, along with a copy of the updated documentation.</p>	\$ 0.00		\$ 0.00
1	Pictometry Connect - EarlyAccess	<p>Pictometry Connect - EarlyAccess provides authorized users the ability to login and access the imagery, as specified elsewhere in this agreement, immediately following its preliminary processing and quality control checks and prior to its final processing. Early Access imagery will become available in CONNECT Explorer incrementally as it is processed and it will remain available until final, fully processed imagery is made available through other means. This offering requires an active Pictometry CONNECT account and the current purchase of access to an imagery product.</p> <p>Product Parameters: Server Integration: Third-Party Integrator: Domain URL:</p>	\$ 10,500.00	100%	\$ 0.00
1	Pictometry Connect View - CA	<p>Pictometry Connect View - CA (Custom Access) provides visualization-only access to the Pictometry-hosted custom imagery libraries specified elsewhere in this Agreement via a web application or server based integration. Requires a customer-provided web application or server based application. With respect to imagery available through this product to third parties or the Public, Pictometry reserves the right to reduce the resolution of the imagery available.</p>	\$ 790.00	57.24%	\$ 337.80

		Term commences on date of activation. The quantity represents the number of years in the Connect term. Product Parameters: Admin User: Bryan McFadden Admin User Email: bryan.mcfadden@unioncountync.gov			
1	Pictometry Connect - CA - 250	Pictometry Connect - CA - 250 (Custom Access) provides up to 250 concurrent authorized users the ability to login and access the Pictometry-hosted custom imagery libraries specified elsewhere in this Agreement via a web-based, server-based or desktop integration. The default deployment is through web-based Pictometry Connect. Term commences on date of activation. The quantity represents the number of years in the Connect term. Product Parameters: Admin User: Bryan McFadden Admin User Email: bryan.mcfadden@unioncountync.gov	\$ 10,500.00	40%	\$ 6,300.00
1	CONNECT ImageService CA	Provides access via a secure web mapping service to existing orthomosaics available within Customer's Connect account. This service allows for unlimited image request transactions pursuant to this Agreement. EagleView may review the usage and, in EagleView's sole discretion, limit further access by Customer to the Connect Image Service based on fair usage and bandwidth restrictions. The orthomosaic imagery provided by this service may be used on Customer's public and internal websites and applications as a basemap layer. The image service application including any links or API keys provided by EagleView may not be shared with users outside of the customer's organization. Customer must maintain an active paid EagleView Connect account in order to utilize the Connect Image Service. Product Parameters: Elevation Data Source: Public Avail - NED/USGS/GeoBase Leaf: Leaf Off: Less than 30% leaf cover	\$ 2,099.00	100%	\$ 0.00
1	ChangeFinder - Project Fee	This is a flat fee per project. One project set-up fee is required for each Change Detection, Change Detection and Building Outlines, or Building Outline line item in the order. Product Parameters: Source One: Source One Year Source Two: Source Two Year: Deck Identification Method: To Be Used in Connect Assessment: Modified Technical Specification:	\$ 1,100.00	100%	\$ 0.00
1	FutureView Adv Training	Full conference registration to advanced training designed to maximize deployment. Includes hotel room for up to three nights, event registration, and round-trip airfare up to \$500. Customer will be provided with discount code to complete FutureView registration. (Air Travel Restrictions - 30 day advance purchase for airfare, per person round trip airfare at standard coach class rates through Pictometry's travel provider only.) Must be redeemed within three years of agreement execution date.	\$ 3,195.00		\$ 3,195.00
SUBTOTAL - THIS AMENDMENT					\$239,014.80

PROJECT 5

QTY	PRODUCT NAME	PRODUCT DESCRIPTION	LIST PRICE	DISCOUNT PRICE %	AMOUNT¹
696	IMAGERY - Reveal 1000 - R2 per square mile	Product includes: 0.75-inch (or better) GSD orthogonal images and 1-inch (or better) oblique images (4-way), available online via an active CONNECT account (purchased separately). Product Parameters: Elevation Data Source: Public Avail - NED/USGS/GeoBase Leaf: Leaf Off: Less than 30% leaf cover	\$ 795.00	65%	\$ 193,662.00
1	RapidAccess - Disaster Response Program	RapidAccess - Disaster Response Program is an emergency response program offering flights after an emergency or disaster. Refer to the attached detailed description of the Disaster Response Program. Term commences on date of initial shipment of imagery for a project. The quantity represents the number of years in the DRP term.	\$ 0.00		\$ 0.00
1	Oblique Support Bundle	Includes digital copy of the Licensed Documentation for the License Software, one, two, or three hour End User Training Sessions, one (1) Advanced User Technical Training, one (1) Administration / IT Training Session, five, ten, or fifteen hours of telephone support, one copy of Pictometry Electronic Field Study (EFS) software, latest version, on the storage media specified herein, and access to download updated versions of the EFS Licensed Software for a period of one, two, or three years from the initial date of shipment of the EFS software, along with a copy of the updated documentation.	\$ 0.00		\$ 0.00
1	Pictometry Connect - EarlyAccess	Pictometry Connect - EarlyAccess provides authorized users the ability to login and access the imagery, as specified elsewhere in this agreement, immediately following its preliminary processing and quality control checks and prior to its final processing. Early Access imagery will become available in CONNECT Explorer incrementally as it is processed and it will remain available until final, fully processed imagery is made available through other means. This offering requires an active Pictometry CONNECT account and the current purchase of access to an imagery product. Product Parameters: Server Integration: Third-Party Integrator: Domain URL:	\$ 10,500.00	100%	\$ 0.00
1	Pictometry Connect View - CA	Pictometry Connect View - CA (Custom Access) provides visualization-only access to the Pictometry-hosted custom imagery libraries specified elsewhere in this Agreement via a web application or server based integration. Requires a customer-provided web application or server based application. With respect to imagery available through this product to third parties or the Public, Pictometry reserves the right to reduce the resolution of the imagery available. Term commences on date of activation. The quantity represents the number of years in the Connect term. Product Parameters: Admin User: Bryan McFadden Admin User Email: bryan.mcfadden@unioncountync.gov	\$ 790.00	57.24%	\$ 337.80
1	Pictometry Connect - CA - 250	Pictometry Connect - CA - 250 (Custom Access) provides up to 250 concurrent authorized users the ability to login and access the Pictometry-hosted custom imagery libraries specified elsewhere in this Agreement via a web-based,	\$ 10,500.00	40%	\$ 6,300.00

		<p>server-based or desktop integration. The default deployment is through web-based Pictometry Connect. Term commences on date of activation. The quantity represents the number of years in the Connect term.</p> <p>Product Parameters: Admin User: Bryan McFadden Admin User Email: bryan.mcfadden@unioncountync.gov</p>			
1	CONNECT ImageService CA	<p>Provides access via a secure web mapping service to existing orthomosaics available within Customer's Connect account. This service allows for unlimited image request transactions pursuant to this Agreement. EagleView may review the usage and, in EagleView's sole discretion, limit further access by Customer to the Connect Image Service based on fair usage and bandwidth restrictions. The orthomosaic imagery provided by this service may be used on Customer's public and internal websites and applications as a basemap layer. The image service application including any links or API keys provided by EagleView may not be shared with users outside of the customer's organization. Customer must maintain an active paid EagleView Connect account in order to utilize the Connect Image Service.</p> <p>Product Parameters: Elevation Data Source: Public Avail - NED/USGS/GeoBase Leaf: Leaf Off: Less than 30% leaf cover</p>	\$ 2,099.00	100%	\$ 0.00
1	FutureView Adv Training	<p>Full conference registration to advanced training designed to maximize deployment. Includes hotel room for up to three nights, event registration, and round-trip airfare up to \$500. Customer will be provided with discount code to complete FutureView registration. (Air Travel Restrictions - 30 day advance purchase for airfare, per person round trip airfare at standard coach class rates through Pictometry's travel provider only.) Must be redeemed within three years of agreement execution date.</p>	\$ 3,195.00		\$ 3,195.00
SUBTOTAL - THIS AMENDMENT					\$203,494.80

PROJECT 6					
QTY	PRODUCT NAME	PRODUCT DESCRIPTION	LIST PRICE	DISCOUNT PRICE %	AMOUNT ¹
696	IMAGERY - Reveal 1000 - R2 per square mile	<p>Product includes: 0.75-inch (or better) GSD orthogonal images and 1-inch (or better) oblique images (4-way), available online via an active CONNECT account (purchased separately).</p> <p>Product Parameters: Elevation Data Source: Public Avail - NED/USGS/GeoBase Leaf: Leaf Off: Less than 30% leaf cover</p>	\$ 795.00	65%	\$ 193,662.00
1	RapidAccess - Disaster Response Program	<p>RapidAccess - Disaster Response Program is an emergency response program offering flights after an emergency or disaster. Refer to the attached detailed description of the Disaster Response Program. Term commences on date of initial shipment of imagery for a project. The quantity represents the number of years in the DRP term.</p>	\$ 0.00		\$ 0.00
1	Oblique Support Bundle	<p>Includes digital copy of the Licensed Documentation for the License Software, one, two, or three hour End User Training Sessions, one (1) Advanced User Technical Training, one (1) Administration / IT Training Session, five, ten, or fifteen hours of telephone support, one copy of Pictometry Electronic Field Study (EFS) software, latest version, on the storage media specified herein, and access to download updated versions of the EFS Licensed</p>	\$ 0.00		\$ 0.00

		Software for a period of one, two, or three years from the initial date of shipment of the EFS software, along with a copy of the updated documentation.			
1	Pictometry Connect - EarlyAccess	<p>Pictometry Connect - EarlyAccess provides authorized users the ability to login and access the imagery, as specified elsewhere in this agreement, immediately following its preliminary processing and quality control checks and prior to its final processing. Early Access imagery will become available in CONNECT Explorer incrementally as it is processed and it will remain available until final, fully processed imagery is made available through other means. This offering requires an active Pictometry CONNECT account and the current purchase of access to an imagery product.</p> <p>Product Parameters: Server Integration: Third-Party Integrator: Domain URL:</p>	\$ 10,500.00	100%	\$ 0.00
1	Pictometry Connect View - CA	<p>Pictometry Connect View - CA (Custom Access) provides visualization-only access to the Pictometry-hosted custom imagery libraries specified elsewhere in this Agreement via a web application or server based integration. Requires a customer-provided web application or server based application. With respect to imagery available through this product to third parties or the Public, Pictometry reserves the right to reduce the resolution of the imagery available. Term commences on date of activation. The quantity represents the number of years in the Connect term.</p> <p>Product Parameters: Admin User: Bryan McFadden Admin User Email: bryan.mcfadden@unioncountync.gov</p>	\$ 790.00	57.24%	\$ 337.80
1	Pictometry Connect - CA - 250	<p>Pictometry Connect - CA - 250 (Custom Access) provides up to 250 concurrent authorized users the ability to login and access the Pictometry-hosted custom imagery libraries specified elsewhere in this Agreement via a web-based, server-based or desktop integration. The default deployment is through web-based Pictometry Connect. Term commences on date of activation. The quantity represents the number of years in the Connect term.</p> <p>Product Parameters: Admin User: Bryan McFadden Admin User Email: bryan.mcfadden@unioncountync.gov</p>	\$ 10,500.00	40%	\$ 6,300.00
1	CONNECT ImageService CA	<p>Provides access via a secure web mapping service to existing orthomosaics available within Customer's Connect account. This service allows for unlimited image request transactions pursuant to this Agreement. EagleView may review the usage and, in EagleView's sole discretion, limit further access by Customer to the Connect Image Service based on fair usage and bandwidth restrictions. The orthomosaic imagery provided by this service may be used on Customer's public and internal websites and applications as a basemap layer. The image service application including any links or API keys provided by EagleView may not be shared with users outside of the customer's organization. Customer must maintain an active paid EagleView Connect account in order to utilize the Connect Image Service.</p> <p>Product Parameters: Elevation Data Source: Public Avail - NED/USGS/GeoBase Leaf: Leaf Off: Less than 30% leaf cover</p>	\$ 2,099.00	100%	\$ 0.00

111000	ChangeFinder - Change Detection; Digital Parcel File Provided	Existing building outlines from a specified older imagery source are updated and classified relative to the most-nadir single-frame orthogonal image in a specified, newer Pictometry imagery source. Pictometry delivers updated digital building outlines from the newer imagery source and their classification attributes in shapefile and geodatabase formats. Coverage includes only locations specified in a single, customer-provided digital parcel shapefile. Parcels in the specified locations must be generally contiguous. All Pictometry imagery to be used must be licensed or owned by the customer. Final invoiced amount will be adjusted for the actual quantity of records in the parcel file used for production. Use of older non-Pictometry-sourced building outline data requires acceptance in advance. Product Parameters: Source One: Pictometry Outlines Source One Year 2027 Source Two: Pictometry Imagery Source Two Year: 2029 Deck Identification Method: Included in Building Outlines To Be Used in Connect Assessment: Yes (Must be ordered as a separate line item) Modified Technical Specification:	\$ 0.47	31.91%	\$ 35,520.00
1	ChangeFinder - Project Fee	This is a flat fee per project. One project set-up fee is required for each Change Detection, Change Detection and Building Outlines, or Building Outline line item in the order. Product Parameters: Source One: Source One Year Source Two: Source Two Year: Deck Identification Method: To Be Used in Connect Assessment: Modified Technical Specification:	\$ 1,100.00	100%	\$ 0.00
1	FutureView Adv Training	Full conference registration to advanced training designed to maximize deployment. Includes hotel room for up to three nights, event registration, and round-trip airfare up to \$500. Customer will be provided with discount code to complete FutureView registration. (Air Travel Restrictions - 30 day advance purchase for airfare, per person round trip airfare at standard coach class rates through Pictometry's travel provider only.) Must be redeemed within three years of agreement execution date.	\$ 3,195.00		\$ 3,195.00
SUBTOTAL - THIS AMENDMENT					\$239,014.80

Thank you for choosing EagleView as your service provider.

TOTAL - THIS AMENDMENT

\$ 1,327,528.80

¹Amount per product = ((1-Discount %) * Qty * List Price)

Geofences:

NC Union (Primary)

Geofences Products Affected:

Pictometry Connect - EarlyAccess
Pictometry Connect View - CA
Pictometry Connect - CA - 250
CONNECT ImageService CA

FEES; PAYMENT TERMS

Customer hereby agrees to pay the Fees specified in this Section A of the Agreement in accordance with the following payment terms. All amounts due to EagleView pursuant to the Agreement (the “Fees”) are expressed in United States dollars and do not include any duties, taxes (including, without limitation, any sales, use, ad valorem or withholding, value added or other taxes) or handling fees, all of which are in addition to the amounts shown above and, to the extent applicable to purchases by Customer, shall be paid by Customer to EagleView without reducing any amount owed to EagleView unless documents satisfactory to EagleView evidencing exemption from such taxes is provided to EagleView prior to billing. To the extent any amounts properly invoiced pursuant to the Agreement are not paid within thirty (30) days following the invoice due date, such unpaid amounts shall accrue, and Customer shall pay, interest at the rate of 1.5% per month (or at the maximum rate allowed by law, if less). In addition, Customer shall pay EagleView all costs EagleView incurs in collecting past due amounts due under this Agreement including, but not limited to, attorneys' fees and court costs.

First Project

Due at Signing \$0

Due at Initial Shipment of Imagery \$221,254.80

Second Project

Due at Initial Shipment of Imagery \$221,254.80

Third Project

Due at Initial Shipment of Imagery \$221,254.80

Fourth Project

Due at Initial Shipment of Imagery \$221,254.80

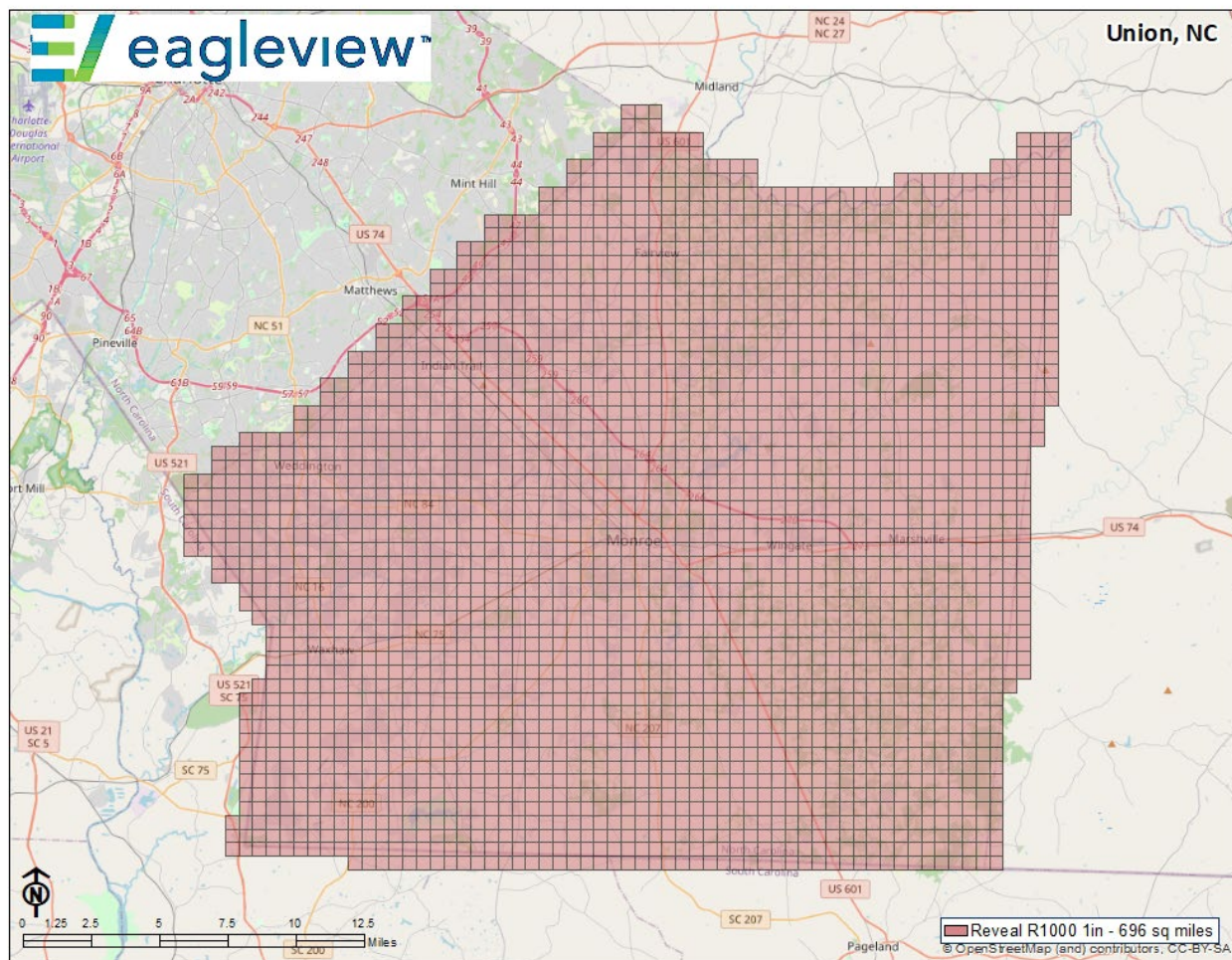
Fifth Project

Due at Initial Shipment of Imagery \$221,254.80

Sixth Project

Due at Initial Shipment of Imagery \$221,254.80

MAP(S) (IF APPLICABLE)



Contains information from OpenStreetMap, which is made available here under the Open Database License (ODbL). openstreetmap.org/copyright