



BILL TO: Union County Water 500 North Main Street Suite 500 Monroe, NC 28112-4730
SHIP TO: Union County Water 4600 Goldmine Rd Monroe NC 28110

Total:	\$209,544.51
--------	--------------

I have a copy and have read the County Purchasing Policy.

BM 18

500 North Main St. - Ste. 600 • Monroe, North Carolina 28112-4730 • Phone: (704)296-4210 • Fax: (704)296-4232

Carolina



SALES AGREEMENT

Carolina CAT, 9000 Statesville Road, Charlotte, NC 28269
Phone (800) 277-1212

THIS AGREEMENT IS SUBJECT TO THE TERMS AND CONDITIONS ON THE REVERSE

DATE Oct 14, 2021
Quote No. 197598

PURCHASER <u>UC WATER</u>		MONROE NC	
STREET ADDRESS <u>4600 GOLDMINE RD SUITE 0000</u>		S _____	
CITY/STATE <u>MONROE, NC</u>		H _____	
COUNTY <u>UNION</u>		I _____	
POSTAL CODE <u>28110</u>		P _____	
PHONE NO. _____		T _____	
EQUIPMENT _____		O _____	
PRODUCT SUPPORT _____		F.O.B. AT: <u>monroe nc</u>	
INDUSTRY CODE: <u>GENERAL GOVERNMENT HC (9199)</u>		PRINCIPAL WORK CODE _____	
CUSTOMER NUMBER <u>769326</u>		Sales Tax Exemption # (if applicable) <u>N/A</u>	
CUSTOMER PO NUMBER _____			
(All terms and payments are subject to Finance Company - OAC approval)			
PAYMENT TERMS:			
NET PAYMENT ON RECEIPT OF INVOICE <input type="checkbox"/>		NET ON DELIVERY <input type="checkbox"/>	
FINANCIAL SERVICES <input type="checkbox"/>		ISC <input type="checkbox"/> LEASE <input type="checkbox"/>	
CASH WITH ORDER \$0.00		BALANCE TO FINANCE \$0.00	
CONTRACT INTEREST RATE 0		OPTIONAL BUY-OUT \$0.00	
PAYMENT PERIOD _____		NUMBER OF PAYMENTS 0	
DESCRIPTION OF EQUIPMENT ORDERED / PURCHASED			
MAKE: CATERPILLAR INC.		MODEL: 317	
STOCK NUMBER: TBA		SERIAL NUMBER: TBA	
YEAR: 2022		SMU: new	
317 THUMB & QC HYDS	598-9754	TRACK, 28" TG, W/STEPS	541-5174
564-4391 COMMON ARRANGEMENT		GUARD, TRACK GUIDING, CENTRE	538-8494
565-1415 317 07 HEX		HYDRAULIC PKG, COMB, ONE SLIDER	599-0914
134-8875 GUARD, SWIVEL, STD		LINES, CYLINDER BOOM W/O BLCV	565-1952
163-3754 GUARD, TRAVEL MOTOR		CAMERA, REAR & RH VIEW	565-1422
561-4616 BOTTOM GUARD, STANDARD		LIGHTS, BOOM LH 1P	585-8704
585-8703 LIGHTS, CHASSIS		LIGHTS, BOOM RH 1P	585-8706
589-5272 TRAVEL ALARM		LIGHTS, CAB, W/O 360	577-3853
597-3209 ENGINE HOOD		BATTERY, STD	558-1734
564-5521 SWING FRAME, STD		WASHER RADIAL WIPER	525-5166
565-1420 FINE SWING		PROD LINK, PLE643/PLE743 RADIO	589-6846
565-4819 UNDERCARRIAGE, LONG		NETWORK MANAGER, STD	555-7286
490-7715 PEDAL, STRAIGHT TRAVEL		CAT GRADE, 2D	558-2814
502-7166 INTEGRATED RADIO, W/O DAB		GRADE SENSOR, 1 PC BOOM	565-4617
511-9428 MONITOR, 10"		GRADE SENSOR, 10'2" STICK	565-4621
520-9418 FILM, OPERATING PATTERN, 2WAY		COUNTERWEIGHT, 3050LB	561-4613
525-7678 MACHINE ECM		UPPER COVER, STD	573-6719
546-0101 CAB, DELUXE		DECALS, EXTERIOR, ANSI	565-2162
549-4728 LINES, AIR CONDITIONER		DECALS, CAB, ANSI	573-4351
AVAILABLE FOR: AM-N		DECALS, STICK WARNING, ANSI	567-3815
BOOM, W/ EOU MOUNTS	565-2163	LINES, HIGH PRESSURE BOOM	565-1971
STICK, R10'2" W/ EOU MOUNTS	565-2182	LINES, HP, 10'2" STICK	565-1980
LINKAGE, BKT 315 GRADE W/O EYE	525-4937	SUPPORT, LINES AUXILIARY	565-1990
CYLINDER, BOOM, W/O BLCV	565-1353	BKT GD 36" 0.81YD3 315	552-8150
CYLINDER, STICK, W/O SLCV	540-1324	TIP, PENETRATION PLUS ADVANSYS	505-4083
CYLINDER, BUCKET	540-1328	SIDECUTTERS, GENERAL PURPOSE	380-1204
TRADE-IN EQUIPMENT		SELL PRICE \$209,544.51	
MODEL: _____ YEAR: _____ SN: _____		EXT WARRANTY Included	
PAYOUT TO: _____ AMOUNT: _____ PAID BY: _____		NET BALANCE DUE \$209,544.51	
MODEL: _____ YEAR: _____ SN: _____		SUBTOTAL \$209,544.51	
PAYOUT TO: _____ AMOUNT: _____ PAID BY: _____		TOTAL (APPLICABLE TAXES MAY APPLY) \$209,544.51	
MODEL: _____ YEAR: _____ SN: _____			
PAYOUT TO: _____ AMOUNT: _____ PAID BY: _____			
ALL TRADE-INS ARE SUBJECT TO EQUIPMENT BEING IN "AS INSPECTED CONDITION" BY VENDOR AT TIME OF DELIVERY OF REPLACEMENT MACHINE PURCHASE ABOVE.			
PURCHASER HEREBY SELLS THE TRADE-IN EQUIPMENT DESCRIBED ABOVE TO THE VENDOR AND WARRANTS IT TO BE FREE AND CLEAR OF ALL CLAIMS, LIENS, MORTGAGES AND SECURITY INTEREST EXCEPT AS SHOWN ABOVE.			
<input checked="" type="checkbox"/> CATERPILLAR EQUIPMENT WARRANTY		<input type="checkbox"/> USED EQUIPMENT WARRANTY All used equipment is sold as is where is and no warranty is offered or implied except as specified here: Warranty applicable: _____ _____ _____	
INITIAL _____ The customer acknowledges that he has received a copy of the CAROLINA CAT Inc./Caterpillar Warranty and has read and understood said warranty. Scheduled oil sampling (S.O.S.) is mandatory with this warranty. The customer is responsible for taking oil samples at designated intervals from all power train components and failure to do so may result in voiding the warranty. Warranty applicable including expiration date where necessary: 12 Month/1,500 Hour Standard Machine Warranty 317-60 MO/5000 HR POWERTRAIN + HYDRAULICS + TECH (Tier 4)		INITIAL _____ _____ _____ _____	
CSA: _____			
NOTES: Priced using NC DOT State Terms Contract 760H 22% List Disc, 10% options List Discount			

ORDER RECEIVED BY

Carolina Tractor & Equipment
John Crocker

REPRESENTATIVE

APPROVED AND ACCEPTED ON
UC WATER

PURCHASER

BY

SIGNATURE

PURCHASER

Title:

Replacement Excavator

Action Requested:

Authorize the County Manager to approve the Purchase Order to replace an excavator.

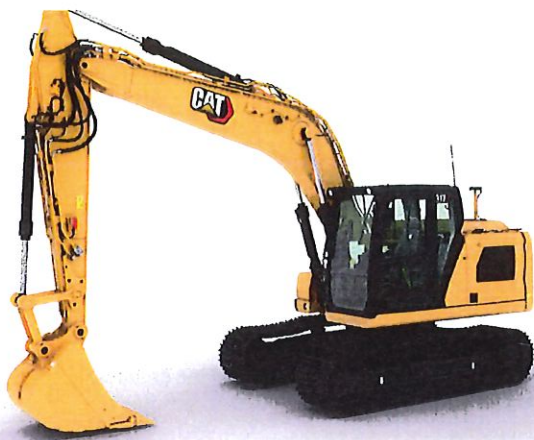
Background:

Union County Water maintains and operates over 1,059 miles of water system infrastructure and over 677 miles of wastewater infrastructure. This excavator is utilized to excavate and repair large diameter pipelines including capability for much deeper excavations. The original excavator has reached the end of its useful life (18 years old) and is becoming more costly to repair and maintain.

Following research into available purchasing opportunities, UC Water determined that its best option for purchasing the excavator is from Carolina CAT for \$209,544.51 using the NC DOT State Term Contract 760H in accordance with N.C.G.S. §143-129 (e)(3). This is a planned purchase for FY22.

Financial Impact:

Sufficient funds are available for this needed purchase in the adopted FY22 Water & Wastewater Division Budget



Cat[®] 317

Hydraulic Excavator

The 317 Hydraulic Excavator boosts productivity on your jobsite. Standard, easy-to-use Cat[®] technologies, performance upgrades, and low fuel and maintenance costs allow you to move material all day with speed and precision while keeping more money in your pocket.

Not all features are available in all regions. Consult your Cat dealer for specific configurations available in your region.

High Performance and Productivity

- Increased breakout forces and hydraulic power increase productivity by up to eight percent over the previous model.
- The advanced hydraulic system provides the optimum balance of power and efficiency while giving you the control you need for precise digging requirements.
- Reduce fuel consumption by up to five percent over the previous model.
- Match your machine to the job with power modes. Let Smart mode automatically match engine and hydraulic power to working conditions. Power mode constantly provides maximum productivity, and ECO mode minimizes fuel consumption in less-demanding applications.
- Get higher production in demanding applications, easier penetration into piles, and faster cycle times with Cat Advansys™ bucket tips. Quickly change tips with a simple lug wrench instead of a hammer or special tool, improving safety and uptime.
- Auxiliary hydraulic options give you the versatility to use a wide range of Cat attachments.
- The Cat C4.4 engine meets U.S. EPA Tier 4 Final emission standards.
- Don't let the temperature stop you from working. The 317 has an optional cold-start capability of -25°C (-13°F).

Boost Efficiency and Productivity with Cat Technology

- Boost productivity up to 45 percent versus traditional grading with the standard Cat Grade with 2D system – includes indicate-only and laser capability.
- Dig with guidance to depth, slope, and horizontal distance to grade. You can set up to four different depth and slope targets to help save time and money.

- Standard 2D E-Fence prevents your machine from moving outside operator-defined parameters.
- Achieve precise load targets and increase loading efficiency with standard Cat Payload which provides on-the-go weighing and real-time estimates of your payload without swinging.
- Upgrade to Cat Grade with Advanced 2D to create and edit grade designs with ease on a second high-resolution 254 mm (10 in) touchscreen monitor.
- Upgrade to Cat Grade with 3D to create and edit designs with ease and see the front linkage's full range of motion on a second high-resolution 254 mm (10 in) touchscreen monitor.
- Know the excavator's exact position relative to GPS and GLONASS systems. The machine automatically compensates for excavator pitch and roll caused by sloping ground conditions.
- Use the excavator's onboard cell technology to quickly connect to 3D services like Trimble Connected Community or Virtual Reference Station.
- Remote Troubleshoot connects you to a dealer service pro to help solve your problem and quickly get you to work.
- Remote Flash works around your schedule to ensure your machine's software is up to date for optimal performance.
- The Cat App helps you manage fleet location, hours, and maintenance schedules; it also alerts you for required maintenance and even allows you to request service from your local Cat dealer
- Standard Product Link™ automatically and accurately collects data from your connected assets – any type and any brand. Information such as location, hours, fuel usage, productivity, idle time, maintenance alerts, diagnostic codes, and machine health can be viewed online through web and mobile applications.



Cat® 317 Hydraulic Excavator

Work in Comfort in the All-New Cab

- Increase operator productivity with an all-new, larger cab.
- The Comfort cab is equipped with a mechanical suspension seat. The Deluxe seat is heated and air adjustable, while the Premium seat is heated and cooled and adjusts automatically.
- Get in and out of the cab easier using the tip-up left console.
- Advanced viscous mounts reduce cab vibration.
- Control the excavator comfortably with easy-to-reach controls, all located in front of you.
- Stow your gear with plenty of in-cab storage beneath and behind the seat, overhead, and in the consoles. A cup holder, document holder, and coat hook are also provided.
- Use the standard radio's USB ports and Bluetooth® technology to connect personal devices and make hands-free calls.

Simple to Operate

- Start the engine with the push of a button, a Bluetooth key fob, a smartphone app, or the unique Operator ID function.
- Program your preferred power mode and joystick settings using your Operator ID. The excavator will automatically remember your selections.
- Navigate quickly on the standard high-resolution touchscreen monitor or with the aid of the jog dial control.
- The Cat PL161 Attachment Locator is a Bluetooth device that makes finding your attachments and other gear quick and easy. The excavator's onboard Bluetooth reader or Cat App on your phone will locate the device automatically.
- Save time and energy with work tool recognition. A simple shake of the attached tool confirms its identity, ensuring all attachment settings are correct, so you can get to work quickly and efficiently.
- Not sure how a function works or how to maintain your machine? Simply access the operator's manual through the touchscreen monitor.

Lower Maintenance Costs

- Expect up to 20 percent less maintenance costs over the previous model.
- Quickly check and service your machine with all daily maintenance points accessible from ground level.
- Check the engine oil level quickly and safely from the ground. Fill and check engine oil on top of the machine with a conveniently located second dipstick.
- Track your machine's filter life and maintenance intervals on the in-cab monitor.
- The new hydraulic oil filter provides improved filtration performance, anti-drain valves to keep oil clean when the filter is replaced, and longer life with a 3,000-hour replacement interval – 50 percent longer than previous filter designs.
- S-O-SSM ports are located at ground level, simplifying maintenance and allowing for quick, easy extraction of fluid samples for analysis.

Safety

- Access all daily maintenance points from ground level – no need for you to climb on top of the machine.
- The standard ROPS cab meets ISO 12117-2:2008 requirements.
- A ground-level shutoff switch stops all fuel to the engine and shuts down the machine when activated.
- A rearview and right-side-view camera are standard. Upgrade to 360° visibility to easily see objects and personnel around the excavator in a single view.
- New service platform design provides easy, safe, and quick access to the upper service platform. Prevent slipping with the anti-skid punch plate on the platform steps.
- Optional boom and stick lowering check valves prevent reverse flow, keeping your front linkage securely in place should the hydraulic system unexpectedly lose power.
- Brightly colored seatbelts allow easy recognition of properly utilized safety restraints.
- Antennas have theft-prevention bolts; a special tool makes them easy to remove at the end of a shift.

Standard and Optional Equipment

Standard and optional equipment may vary. Consult your Cat dealer for details.

	Standard	Optional		Standard	Optional
BOOMS AND STICKS			HYDRAULIC SYSTEM		
5.1 m (16'9") Reach boom	✓		Boom and stick regeneration circuits	✓	
R2.6 m (8'6") stick		✓	Automatic hydraulic warm up	✓	
R2.9 m (9'6") stick		✓	Automatic two-speed travel	✓	
2.9 m (9'6") thumb ready stick		✓	Electric main control valve	✓	
R3.1 m (10'2") stick		✓	Boom and stick drift reduction valve	✓	
CAB			Boom and stick lowering check valves		✓
ROPS, sound suppression	✓		Element-type main hydraulic filter	✓	
Deluxe cab: air suspension heated seat, 10" touchscreen monitor	✓		Single-type electronic main pump	✓	
CAT TECHNOLOGIES			SAFETY AND SECURITY		
Cat Product Link	✓		Rear- and right-side-view cameras	✓	
Cat Grade with 2D	✓		360° visibility		✓
Cat Grade with Advanced 2D		✓	Ground level engine shutoff switch	✓	
Cat Grade with 3D		✓	Service platform with anti-skid plate and countersunk bolts	✓	
Cat Payload	✓		Signaling/warning horn	✓	
2D E-Fence	✓		Hydraulic lock out lever	✓	
Remote Flash capability	✓		SERVICE AND MAINTENANCE		
Remote Troubleshoot capability	✓		Side entry to service platform	✓	
Work tool recognition	✓		Grouped engine oil and fuel filters	✓	
Work tool tracking	✓		Ground level engine oil dipstick	✓	
Auto hammer stop	✓		S-O-S sampling ports	✓	
ELECTRICAL SYSTEM			UNDERCARRIAGE AND STRUCTURES		
Maintenance free battery	✓		Grease lubricated track link	✓	
LED chassis light, left-side/right-side boom lights, cab lights	✓		Tie-down points (ISO 15818:2017 compliant)	✓	
Programmable time-delay LED working lights	✓		600 mm (24") triple grouser shoes		✓
360° lighting		✓	600 mm (24") rubber track shoe		✓
ENGINE			700 mm (28") triple grouser shoes		✓
C4.4 Tier 4 Final diesel engine	✓		3.05 mt (6,720 lb) counterweight		✓
One-touch low idle with automatic engine speed control	✓		3.57 mt (7,870 lb) counterweight		✓
Automatic engine shutdown	✓				
-18°C (-0°F) cold start capability		✓			
-25°C (-13°F) cold start capability		✓			
Electric fuel priming pump	✓				
Two-stage fuel filtration system with water separator and indicator	✓				
Sealed double element air filter with integrated precleaner	✓				
Electric cooling fans	✓				
Biodiesel capability up to B20	✓				

Cat® 317 Hydraulic Excavator

Technical Specifications

Engine		
Engine Model	C4.4	
Engine Power – ISO 14396:2002	98 kW	131 hp
Net Power – ISO 9249:2007	97 kW	130 hp
Bore	105 mm	4 in
Stroke	127 mm	5 in
Displacement	4.4 L	269 in³

- No engine power derate required below 3000 m (9,840 ft) altitude.
- Net power available at the flywheel when the engine is equipped with fan, air cleaner, aftertreatment, and alternator with engine speed at 2,200 rpm.

Hydraulic System		
Main System – Maximum Flow	296 L/min	78 gal/min
Maximum Pressure – Equipment	35 000 kPa	5,076 psi
Maximum Pressure – Travel	35 000 kPa	5,076 psi
Maximum Pressure – Swing	25 800 kPa	3,741 psi

Swing Mechanism		
Swing Speed	8.7 rpm	
Maximum Swing Torque	61 kN-m	44,990 lb-ft

Weights		
Operating Weight	18 200 kg	40,200 lb

- Long undercarriage, Reach boom, R3.1 (10'2") stick, GD 0.76 m³ (0.99 yd³) bucket, 700 mm (28") triple grouser shoes and 3.57 mt (7,870 lb) counterweight.

Service Refill Capacities		
Fuel Tank Capacity	271 L	71.6 gal
Cooling System	28 L	7.4 gal
Engine Oil	15 L	4.0 gal
Final Drive	6 L	1.6 gal
Hydraulic System (including tank)	94 L	24.8 gal
Hydraulic Tank	87 L	23.0 gal
DEF Tank	22 L	5.9 gal

Dimensions		
Boom	Reach 5.1 m (16'9")	
Stick	Reach R2.9 m (9'6")	
Bucket	GD 0.76 m³ (0.99 yd³)	
Shipping Height (top of cab)	2930 mm	9'7"
Handrail Height	2940 mm	9'8"
Shipping Length	8570 mm	28'1"
Tail Swing Radius	2500 mm	8'2"
Counterweight Clearance	1010 mm	3'4"
Ground Clearance	430 mm	1'5"
Track Length	3970 mm	13'0"
Length to Center of Rollers	3170 mm	10'5"
Track Gauge	1990 mm	6'6"
Transport Width – 700 mm (28") Shoes	2690 mm	8'10"

Working Ranges		
Boom	Reach 5.1 m (16'9")	
Stick	Reach R2.9 m (9'6")	
Bucket	GD 0.76 m³ (0.99 yd³)	
Maximum Digging Depth	6400 mm	21'0"
Maximum Reach at Ground Line	9010 mm	29'7"
Maximum Cutting Height	8900 mm	29'2"
Maximum Loading Height	6280 mm	20'7"
Minimum Loading Height	1990 mm	6'6"
Maximum Depth Cut for 2400 mm (8'0") Level Bottom	6170 mm	20'3"
Maximum Vertical Wall Digging Depth	4960 mm	16'3"
Minimum Working Equipment Radius	2940 mm	9'8"
Bucket Digging Force (ISO)	123 kN	27,650 lbf
Stick Digging Force (ISO)	75 kN	16,860 lbf

Air Conditioning System		
<ul style="list-style-type: none"> • The air conditioning system on this machine contains the fluorinated greenhouse gas refrigerant R134a (Global Warming Potential = 1430). The system contains 0.9 kg of refrigerant which has a CO₂ equivalent of 1.287 metric tonnes. 		

For more complete information on Cat products, dealer services, and industry solutions, visit us on the web at www.cat.com.

© 2021 Caterpillar
All rights reserved

Materials and specifications are subject to change without notice. Featured machines in photos may include additional equipment. See your Cat dealer for available options.

CAT, CATERPILLAR, LET'S DO THE WORK, their respective logos, Advantys, Product Link, S•O•S, "Caterpillar Corporate Yellow", the "Power Edge" and Cat "Modern Hex" trade dress as well as corporate and product identity used herein, are trademarks of Caterpillar and may not be used without permission.

AEXQ3069-01 (01-2021)
Replaces AEXQ3069-00
Build Number: 07A
(N Am)

