

Investing in Student Success, Workforce Development, and Community Safety

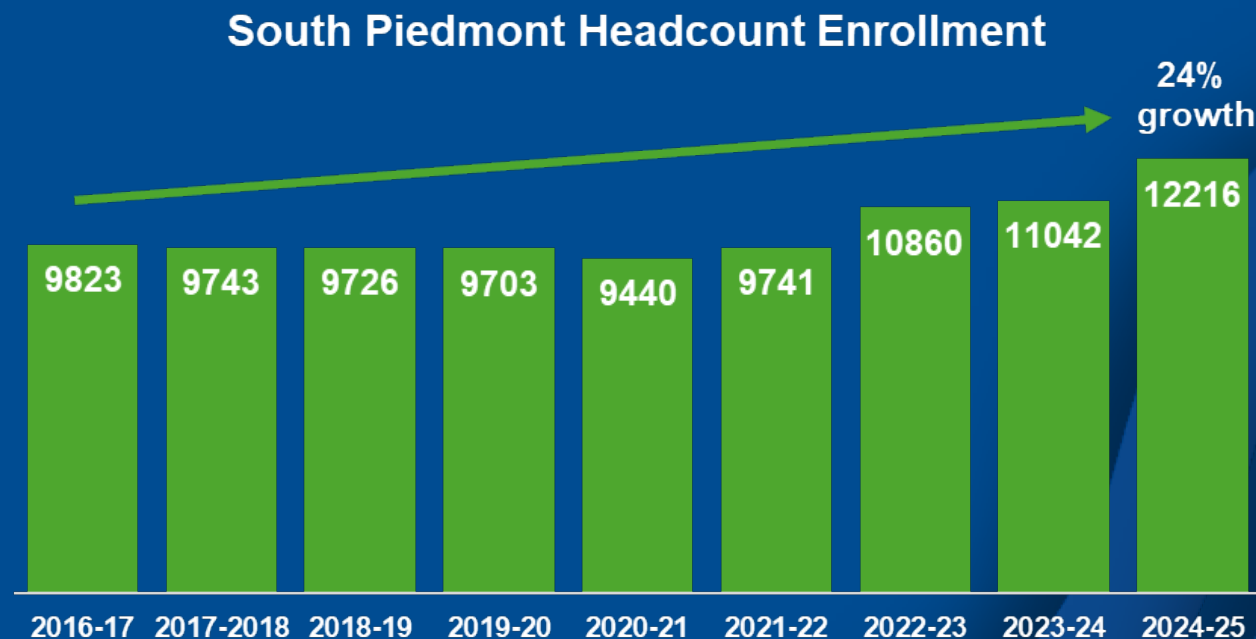
April 20, 2026

 SOUTH PIEDMONT COMMUNITY COLLEGE



Enrollment Growth

- Growth every year since 2020-21
- 2nd fastest growth in the NC Community College System
- 24% enrollment growth since 2016-17
- 9,823 to 12,216 students annually



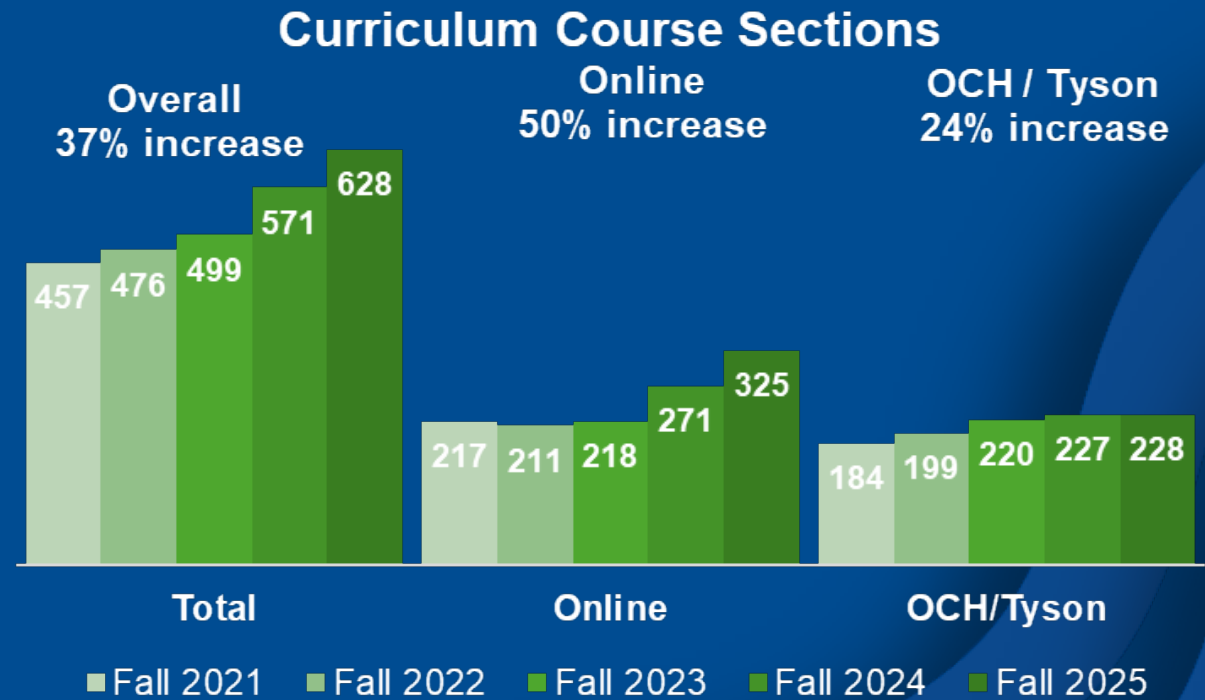
Partnership with Union County

- Appreciation
- Investment
- Stewardship



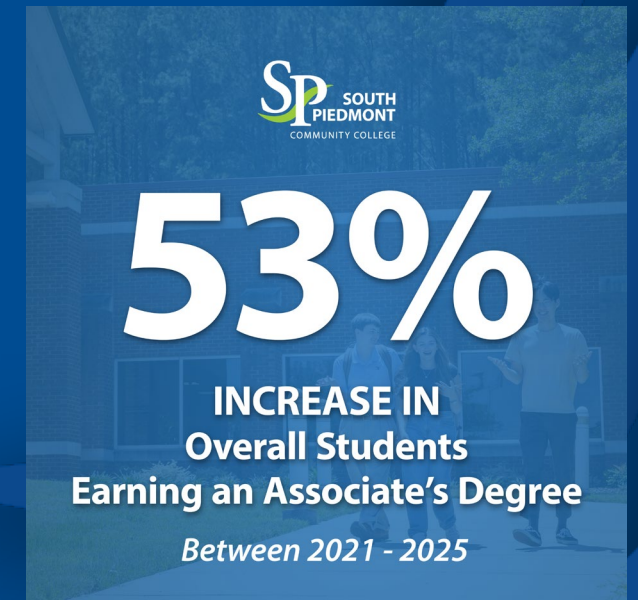
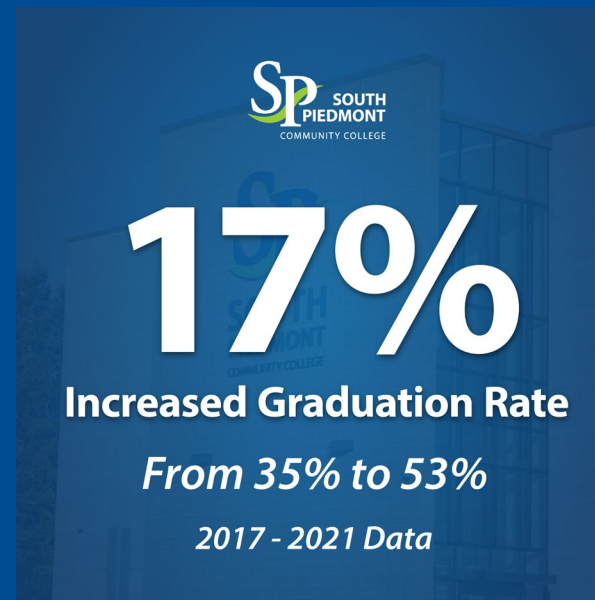
Serving More Students

- 24% increase in in-person courses
- 50% increase in online courses
- 37% increase in total course sections
- 13% dual enrollment participation rate in Union County – over 2,000 students annually



Strong Student Outcomes

- Aspen Top 200 College
- Graduation rate increase: 35% to 53%
- Associate degree graduates increase: 53%
- Course success rate increase: 84% to 90%
- Course retention rate increase: 90% to 94%



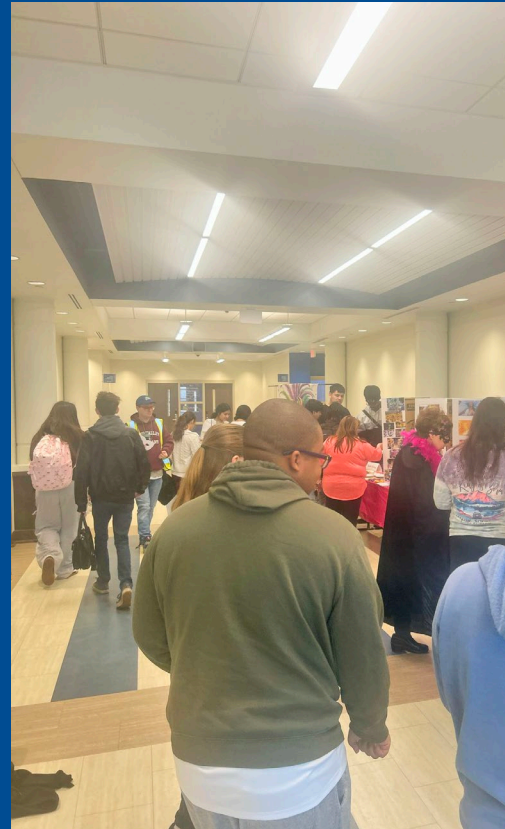
Preparing the County's Workforce

- 81% employed one year after leaving South Piedmont
- Average wage: \$56,052
- Strong employer demand for programs



Capacity Challenges

- Increased in-person course demand
- Limited classroom capacity
- Parking constraints
- Limited space for workforce programs
- Exhausted office space



Short-term Solutions

- Encouraging appropriate employees to work remotely
- Full-time employees sharing office space
- Full-time employees located in almost 20-year old modular units with no restrooms
- Continued heavy reliance on Hy-Flex classes



Early College Facility Challenges

- Building frequently accessed by public
- Difficult to achieve secure lockdown
- Outdoor space adjacent to Old Charlotte Highway



Education Building

- 58,000 sq ft
- Total prelim budget \$34.4M
- Early College and South Piedmont classrooms



Public Safety Training Facility

- 55,000 sq ft
- Total prelim budget \$30.6M
- BLET/EMS
- Public Safety Training
- Fitness Facility
- Will allow us to expand health programs in Braswell



Proposed Projects

Project	Cost	Size
Educational Building	\$34.4M	58,000 sq ft
Public Safety Training Facility	\$30.6M	55,000 sq ft
Total	\$65M	113,000 sq ft

Benefits to Union County

- This investment will:
 - Increase classroom capacity
 - Improve safety for Early College students
 - Expand public safety training capacity
 - Expand health programs capacity
 - Support workforce development
 - Allow the college to continue servicing a growing number of residents

Strategic Investment in Union County's Future

- South Piedmont Community College is:
 - Growing rapidly
 - Producing strong outcomes
 - Reaching facility capacity

Thank You

Questions?

 **SOUTH PIEDMONT COMMUNITY COLLEGE**

