



Invitation for Bid No. 2022-016

Progress Building Renovations

.....

ADDENDUM No. 1

ISSUE DATE: October 8, 2021

Responding Bidders on this project are hereby notified that this Addendum shall be made a part of the above named IFB document.

The following items add to, modify, and/or clarify the IFB documents and shall have the full force and effect of the original Documents. This Addendum shall be acknowledged by the Offeror in the IFB document.

PROGRESS BUILDING – RENOVATIONS
MONROE, NC
Architect's Project No: 601192

GENERAL:

Planholders are requested to insert this Addendum in the front of their Project Manual. Inform all concerned that the Bidding Documents are modified by this Addendum.

The following modifications and clarifications are hereby made a part of the Bidding Documents and supersede or otherwise modify the provisions of the published *Project Manual* and *Drawings*, dated 3-30-2021.

Refer to the Drawings, Specification Sections, or other Documents, if any, attached to this Addendum, which are hereby made a part of this Addendum.

A Pre-Bid Conference was held on 09-30-2021. A copy of the sign-in log has been posted to www.moseleyarchitects.com/bidding for information only and is not considered a part of the Bidding Documents.

MODIFICATIONS TO THE PROJECT MANUAL AND DRAWINGS:

DELETE the previously issued Documents indicated below in their entirety and SUBSTITUTE the revised Documents in their entirety, noted as Addendum 01, dated 10-08-2021.

DRAWING 2.1.1

DRAWING A3.1.1

DRAWING A7.1.1

DRAWING E0.1

DRAWING E2.1

REFER TO DRAWINGS ATTACHED TO THE END OF THIS ADDENDUM

REFER TO SPECIFICATION SECTIONSS ATTACHED TO THE END OF THIS ADDENDUM

END OF ADDENDUM NO 01

APPLIES TO DRAWINGS A2.1.1
REPRESENTED BY n

01

NUMBER	NAME	FLOOR		WALLS				WAINSCOT	CEILING	NOTES
		BASE		NORTH	EAST	SOUTH	WEST			
1A	LOBBY	P-TILE-B	P-TILE-B	PT	PT	PT	PT		AC/PG-BT	1.3
1B	ELEVATOR	P-TILE-B	SS	PLAM	PLAM	PLAM	PLAM		SS	2
1C	CORRIDOR	VT	RB	PT	PT	PT	PT		ACP	
1D	MEN	P-TILE-A	P-TILE-A	PT	P-TILE-A	PT	P-TILE-A		ETR	5.6
1E	WOMEN	P-TILE-A	P-TILE-A	PT	P-TILE-A	PT	P-TILE-A		ETR	5.6
2A	CORRIDOR	C-TILE-B	RB	PT	PT	PT	PT		ACP	
2B	JANITOR	CONC-SLR	RB	EPX-PT	EPX-PT	EPX-PT	EPX-PT		ACP	
2C	TOILET	P-TILE-A	P-TILE-A	PT	PT	PT	P-TILE-A		ACP	5.6
2D	STAIR	RFT/RSR/ST	RB	PT	PT	PT	PT		ACP	
2E	CORRIDOR	C-TILE-B	RB	PT	PT	PT	PT		ACP	
2F	MEN	P-TILE-A	P-TILE-A	PT	PT	P-TILE-A	PT		ACP	5.6
2G	WOMEN	P-TILE-A	P-TILE-A	PT	PT	P-TILE-A	PT		ACP	5.6
100	OPEN OFFICE	ETR	RB	ETR	ETR	ETR	ETR PT		ETR	
107	BREAK ROOM	VT	RB	PT	PT	PT	PT		ETR	
108	PLAN AREA	ETR	RB	ETR	ETR PT	ETR	ETR PT		ETR	4
116	OFFICE	C-TILE-A	RB	PT	PT	PT	PT		ACP	
117	WORK AREA	C-TILE-A	RB	PT	PT	PT	PT		ACP	
118	OPEN OFFICE	C-TILE-C	RB	PT	PT	PT	PT		GB-PT	
120	OFFICE	C-TILE-A	RB	PT	PT	PT	PT		GB-PT	
121	OFFICE	C-TILE-A	RB	PT	PT	PT	PT		GB-PT	
200	RECEPTION	C-TILE-B	RB	PT	PT	PT	PT		ACP	
201	CONFERENCE ROOM	C-TILE-B	RB	PT	PT	PT	PT		ACP	
202	OFFICE	C-TILE-B	RB	PT	PT	PT	PT		ACP	
203	OFFICE	C-TILE-B	RB	PT	PT	PT	PT		ACP	
204	OFFICE	C-TILE-B	RB	PT	PT	PT	PT		ACP	
205	CONFERENCE ROOM	C-TILE-B	RB	PT	PT	PT	PT		ACP	
206	WORK AREA	C-TILE-B	RB	PT	PT	PT	PT		ACP	
207	OFFICE	C-TILE-B	RB	PT	PT	PT	PT		ACP	
208	STORAGE	VT	RB	PT	PT	PT	PT		ACP	
208A	STORAGE	VT	RB	PT	PT	PT	PT		ACP	
209	OFFICE	C-TILE-B	RB	PT	PT	PT	PT		ACP	
210	STUDIO	C-TILE-B	RB	PT	PT	PT	PT		ACP	
211	OFFICE	C-TILE-B	RB	PT	PT	PT	PT		ACP	
212	BREAK ROOM	VT	RB	PT	PT	PT	PT		ACP	
212A	CLOSET	VT	RB	PT	PT	PT	PT		EXPC-PT	

1. VINYL WALLCOVERING ON FIRST FLOOR ONLY. TERMINATE WALLCOVERING AT BULKHEADS.
2. PROVIDE ELEVATOR FINISHES FROM MANUFACTURER'S STANDARD FINISH PACKAGE.
3. PROVIDE AND MOUNT MANUAL ROLLER SHADE TO MATCH EXISTING ROLLER SHADES IN ADJACENT STOREFRONT BAYS. REFER TO DIVISION 12, SECTION ROLLER WINDOW SHADES (MANUAL).
4. FINISHES ARE EXISTING TO REMAIN PATCH WHERE NEEDED AND ADD NEW FOR NEWLY INSTALLED WALLS.
5. PROVIDE TILE BASE ON PAINTED WALLS. REFER TO DIVISION 9, SECTION TILING FOR INFORMATION ON TILE BASE.
6. PROVIDE COVED METAL TRANSITION. REFER TO DIVISION 9, SECTION TILING.

Figure 1 consists of five cross-sectional diagrams labeled (a) through (e), illustrating different floor transition configurations. Each diagram shows a horizontal floor surface with various materials and transitions indicated by arrows and labels.

- (a)** Shows a transition from **CARPET** on the left to **CERAMIC TILE** on the right, with a **MARBLE THRESHOLD** in between.
- (b)** Shows a transition from **CARPET** on the left to **CONCRETE** on the right, with a **VINYL TRANSITION** in between.
- (c)** Shows a transition from **CARPET** on the left to **VCT / LVT** on the right, with a **VINYL TRANSITION** in between.
- (d)** Shows a transition from **CONCRETE** on the left to **VCT / LVT** on the right, with a **VINYL TRANSITION** in between.
- (e)** Shows a transition from **VCT / LVT** on the left to **CERAMIC TILE** on the right, with a **MARBLE THRESHOLD** in between. Arrows indicate a 1/4" slope on the VCT / LVT side and a 1/8" slope on the tile side.

- A. FINISH SCHEDULE DESCRIBES ONLY THE BASIC OR PREDOMINANT SURFACE FINISH.
- B. PROVIDE SAME FINISHES AS THE ADJACENT SPACE IN ALCOVES AND CONTINUOUS SPACES WITHOUT DESIGNATED SPACE NUMBERS.
- C. CASEWORK FINISHES ARE NOT NOTED IN THE FINISH SCHEDULE. REFER TO CASEWORK ELEVATIONS AND SPECIFICATIONS FOR MATERIALS AND FINISHES.
- D. DIRECTIONAL WALL FINISH INDICATORS (NORTH, EAST, SOUTH, WEST) REFER TO THE "PLAN" NORTH ORIENTATION.
- E. BULKHEADS AND SOFFITS MAY NOT BE INDICATED IN FINISH SCHEDULES. REFER TO RCP DETAILS, AND OTHER DOCUMENTS FOR EXTENT.
- F. PROVIDE CONTINUOUS SEALANT BETWEEN INTERIOR SLAB-ON-GRADE AND VERTICAL ELEMENT WHERE JOINT IS NOT CONCEALED BY FINISH BASE OR OTHER CONSTRUCTION.

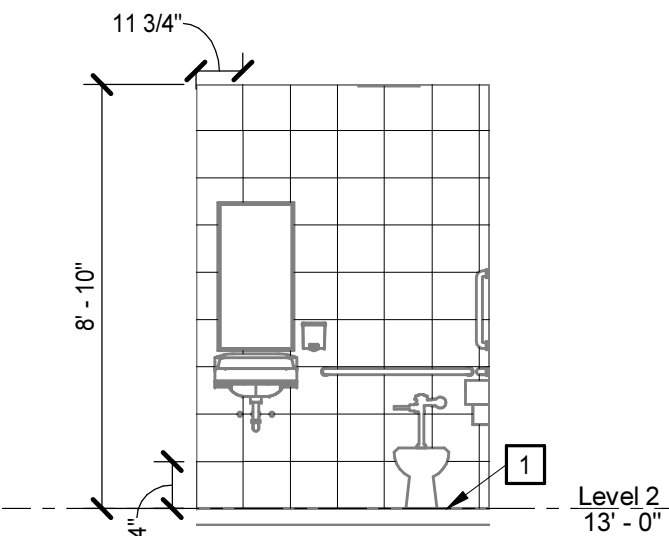
APPLIES TO DRAWINGS A3.0.1-A3.0.r

SPACE NUMBER	ACCENT COLOR	LOCATION
A000	NO. 1	BULK HEADS
B000	NO. 2	STEEL COLUMNS & BEAMS
C000	NO. 3	RECESSED NICHE ON SOUTH WALL
A000, B000, C000	NO. 1	DECK
	NO. 2	STEEL BEAMS
	NO. 3	DUCTWORK
D	-	-
E	-	-
F	-	-
G	-	-
H	-	-
I	-	-
J	-	-
K	-	-
L	-	-
M	-	-
N	-	-
O	-	-
P	-	-
Q	-	-
R	-	-
S	-	-
T	-	-
U	-	-
V	-	-
W	-	-
X	-	-
Y	-	-
Z	-	-
AA	-	-
AB	-	-
AC	-	-
AD	-	-
AE	-	-
AF	-	-
AG	-	-
AH	-	-
AI	-	-
AJ	-	-
AK	-	-
AL	-	-
AM	-	-
AN	-	-
AO	-	-
AP	-	-
AQ	-	-
AR	-	-
AS	-	-
AT	-	-
AU	-	-
AV	-	-
AW	-	-
AX	-	-
AY	-	-
AZ	-	-
BA	-	-
BB	-	-
BC	-	-
BD	-	-
BE	-	-
BF	-	-
BG	-	-
BH	-	-
BI	-	-
BJ	-	-
BK	-	-
BL	-	-
BM	-	-
BN	-	-
BO	-	-
BP	-	-
BQ	-	-
BR	-	-
BS	-	-
BT	-	-
BU	-	-
BV	-	-
BW	-	-
BX	-	-
BY	-	-
BZ	-	-
CA	-	-
CB	-	-
CC	-	-
CD	-	-
CE	-	-
CF	-	-
CG	-	-
CH	-	-
CI	-	-
CJ	-	-
CK	-	-
CL	-	-
CM	-	-
CN	-	-
CO	-	-
CP	-	-
CQ	-	-
CR	-	-
CS	-	-
CT	-	-
CU	-	-
CV	-	-
CW	-	-
CX	-	-
CY	-	-
CZ	-	-
DA	-	-
DB	-	-
DC	-	-
DD	-	-
DE	-	-
DF	-	-
DG	-	-
DH	-	-
DI	-	-
DJ	-	-
DK	-	-
DL	-	-
DM	-	-
DN	-	-
DO	-	-
DP	-	-
DQ	-	-
DR	-	-
DS	-	-
DT	-	-
DU	-	-
DV	-	-
DW	-	-
DX	-	-
DY	-	-
DZ	-	-
EA	-	-
EB	-	-
EC	-	-
ED	-	-
EE	-	-
EF	-	-
EG	-	-
EH	-	-
EI	-	-
EJ	-	-
EK	-	-
EL	-	-
EM	-	-
EN	-	-
EO	-	-
EP	-	-
EQ	-	-
ER	-	-
ES	-	-
ET	-	-
EU	-	-
EV	-	-
EW	-	-
EX	-	-
EY	-	-
EZ	-	-
FA	-	-
FB	-	-
FC	-	-
FD	-	-
FE	-	-
FF	-	-
FG	-	-
FH	-	-
FI	-	-
FJ	-	-
FK	-	-
FL	-	-
FM	-	-
FN	-	-
FO	-	-
FP	-	-
FQ	-	-
FR	-	-
FS	-	-
FT	-	-
FU	-	-
FV	-	-
FW	-	-
FX	-	-
FY	-	-
FZ	-	-
GA	-	-
GB	-	-
GC	-	-
GD	-	-
GE	-	-
GF	-	-
GG	-	-
GH	-	-
GI	-	-
GJ	-	-
GK	-	-
GL	-	-
GM	-	-
GN	-	-
GO	-	-
GP	-	-
GQ	-	-
GR	-	-
GS	-	-
GT	-	-
GU	-	-
GV	-	-
GW	-	-
GX	-	-
GY	-	-
GZ	-	-
HA	-	-
HB	-	-
HC	-	-
HD	-	-
HE	-	-
HF	-	-
HG	-	-
HH	-	-
HI	-	-
HJ	-	-
HK	-	-
HL	-	-
HM	-	-
HN	-	-
HO	-	-
HP	-	-
HQ	-	-
HR	-	-
HS	-	-
HT	-	-
HU	-	-
HV	-	-
HW	-	-
HX	-	-
HY	-	-
HZ	-	-
IA	-	-
IB	-	-
IC	-	-
ID	-	-
IE	-	-
IF	-	-
IG	-	-
IH	-	-
II	-	-
IJ	-	-
IK	-	-
IL	-	-
IM	-	-
IN	-	-
IO	-	-
IP	-	-
IQ	-	-
IR	-	-
IS	-	-
IT	-	-
IU	-	-
IV	-	-
IW	-	-
IX	-	-
IY	-	-
IZ	-	-
JA	-	-
JB	-	-
JC	-	-
JD	-	-
JE	-	-
JF	-	-
JG	-	-
JH	-	-
JI	-	-
JJ	-	-
JK	-	-
JL	-	-
JM	-	-
JN	-	-
JO	-	-
JP	-	-
JQ	-	-
JR	-	-
JS	-	-
JT	-	-
JU	-	-
JV	-	-
JW	-	-
JX	-	-
JY	-	-
JZ	-	-
KA	-	-
KB	-	-
KC	-	-
KD	-	-
KE	-	-
KF	-	-
KG	-	-
KH	-	-
KI	-	-
KJ	-	-
KK	-	-
KL	-	-
KM	-	-
KN	-	-
KO	-	-
KP	-	-
KQ	-	-
KR	-	-
KS	-	-
KT	-	-
KU	-	-
KV	-	-
KW	-	-
KX	-	-
KY	-	-
KZ	-	-
LA	-	-
LB	-	-
LC	-	-
LD	-	-
LE	-	-
LF	-	-
LG	-	-
LH	-	-
LI	-	-
LJ	-	-
LK	-	-
LL	-	-
LM	-	-
LN	-	-
LO	-	-
LP	-	-
LQ	-	-
LR	-	-
LS	-	-
LT	-	-
LU	-	-
LV	-	-
LW	-	-
LX	-	-
LY	-	-
LZ	-	-
MA	-	-
MB	-	-
MC	-	-
MD	-	-
ME	-	-
MF	-	-
MG	-	-
MH	-	-
MI	-	-
MJ	-	-
MK	-	-
ML	-	-
MM	-	-
MN	-	-
MO	-	-
MP	-	-
MQ	-	-
MR	-	-
MS	-	-
MT	-	-
MU	-	-
MV	-	-
MW	-	-
MX	-	-
MY	-	-
MZ	-	-
NA	-	-
NB	-	-
NC	-	-
ND	-	-
NE	-	-
NF	-	-
NG	-	-
NH	-	-
NI	-	-
NJ	-	-
NK	-	-
NL	-	-
NM	-	-
NN	-	-
NO	-	-
NP	-	-
NQ	-	-
NR	-	-
NS	-	-
NT	-	-
NU	-	-
NV	-	-
NW	-	-
NX	-	-
NY	-	-
NZ	-	-
OA	-	-
OB	-	-
OC	-	-
OD	-	-
OE	-	-
OF	-	-
OG	-	-
OH	-	-
OI	-	-
OJ	-	-
OK	-	-
OL	-	-
OM	-	-
ON	-	-
OO	-	-
OP	-	-
OQ	-	-
OR	-	-
OS	-	-
OT	-	-
OU	-	-
OV	-	-
OW	-	-
OX	-	-
OY	-	-
OZ	-	-
PA	-	-
PB	-	-
PC	-	-
PD	-	-
PE	-	-
PF	-	-
PG	-	-
PH	-	-
PI	-	-
PJ	-	-
PK	-	-
PL	-	-
PM	-	-
PN	-	-
PO	-	-
PP	-	-
PQ	-	-
PR	-	-
PS	-	-
PT	-	-
PU	-	-
PV	-	-
PW	-	-
PX	-	-
PY	-	-
PZ	-	-
QA	-	-
QB	-	-
QC	-	-
QD	-	-
QE	-	-
QF	-	-
QG	-	-
QH	-	-
QI	-	-
QJ	-	-
QK	-	-
QL	-	-
QM	-	-
QN	-	-
QO	-	-
QP	-	-
QQ	-	-
QR	-	-
QS	-	-
QT	-	-
QU	-	-
QV	-	-
QW	-	-
QX	-	-
QY	-	-
QZ	-	-
RA	-	-
RB	-	-
RC	-	-
RD	-	-
RE	-	-
RF	-	-
RG	-	-
RH	-	-
RI	-	-
RJ	-	-
RK	-	-
RL	-	-
RM	-	-
RN	-	-
RO	-	-
RP	-	-
RQ	-	-
RR	-	-
RS	-	-
RT	-	-
RU	-	-
RV	-	-
RW	-	-
RX	-	-
RY	-	-
RZ	-	-
SA	-	-
SB	-	-
SC	-	-
SD	-	-
SE	-	-
SF	-	-
SG	-	-
SH	-	-
SI	-	-
SJ	-	-
SK	-	-
SL	-	-
SM	-	-
SN	-	-
SO	-	-
SP	-	-
SQ	-	-
SR	-	-
SS	-	-
ST	-	-
SU	-	-
SV	-	-
SW	-	-
SX	-	-
SY	-	-
SZ	-	-
TA	-	-
TB	-	-
TC	-	-
TD	-	-
TE	-	-
TF	-	-
TG	-	-
TH	-	-
TI	-	-
TJ	-	-
TK	-	-
TL	-	-
TM	-	-
TN	-	-
TO	-	-
TP	-	-
TQ	-	-
TR	-	-
TS	-	-
TT	-	-
TU	-	-
TV	-	-
TW	-	-
TX	-	-
TY	-	-
TZ	-	-
UA	-	-
UB	-	-
UC	-	-
UD	-	-
UE	-	-
UF	-	-
UG	-	-
UH	-	-
UI	-	-
UJ	-	-
UK	-	-
UL	-	-
UM	-	-
UN	-	-
UO	-	-
UP	-	-
UQ	-	-
UR	-	-
US	-	-
UT	-	-
UU	-	-
UV	-	-
UW	-	-
UX	-	-
UY	-	-
UZ	-	-
VA	-	-
VB	-	-
VC	-	-
VD	-	-
VE	-	-
VF	-	-
VG	-	-
VH	-	-
VI	-	-
VJ	-	-
VK	-	-
VL	-	-
VM	-	-
VN	-	-
VO	-	-
VP	-	-
VQ	-	-
VR	-	-
VS	-	-
VT	-	-
VU	-	-
VV	-	-
VW	-	-
VX	-	-
VY	-	-
VZ	-	-
WA	-	-
WB	-	-
WC	-	-
WD	-	-
WE	-	-
WF	-	-
WG	-	-
WH	-	-
WI	-	-
WJ	-	-
WK	-	-
WL	-	-
WM	-	-

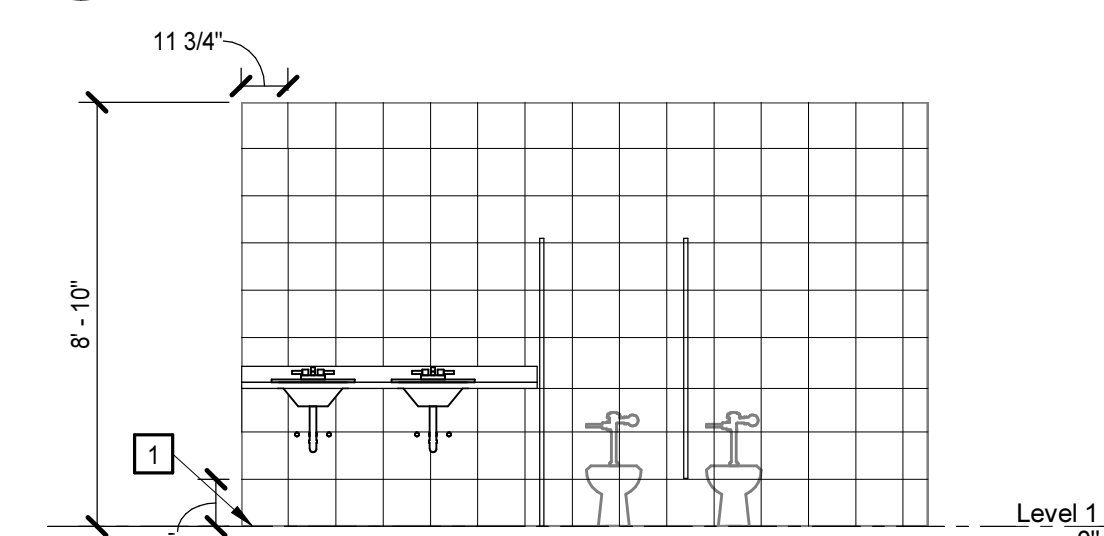
ACCENT FINISH SCHEDULE NOTES

1. ABOVE COLOR NOS. ARE FOR ACCENT PAINT COLORS ONLY. THEY DO NOT INCLUDE DOOR FRAMES, PAINTED BASE, GENERAL WALL COLORS.
2. COLOR NOS. INDICATED ABOVE ARE PARTICULAR TO THE DESIGNATED SPACE ONLY. (I.E. COLOR NO. 1 FOR A₁₁₁₁ MAY BE DIFFERENT FROM COLOR NO. 1 FOR B₁₁₁₁)
3. PAINT ALL EXPOSED ELEMENTS (SUCH AS PIPING AND CONDUITS) TO MATCH ADJACENT COLOR (HIDE & BLEND).
4. NOTE...

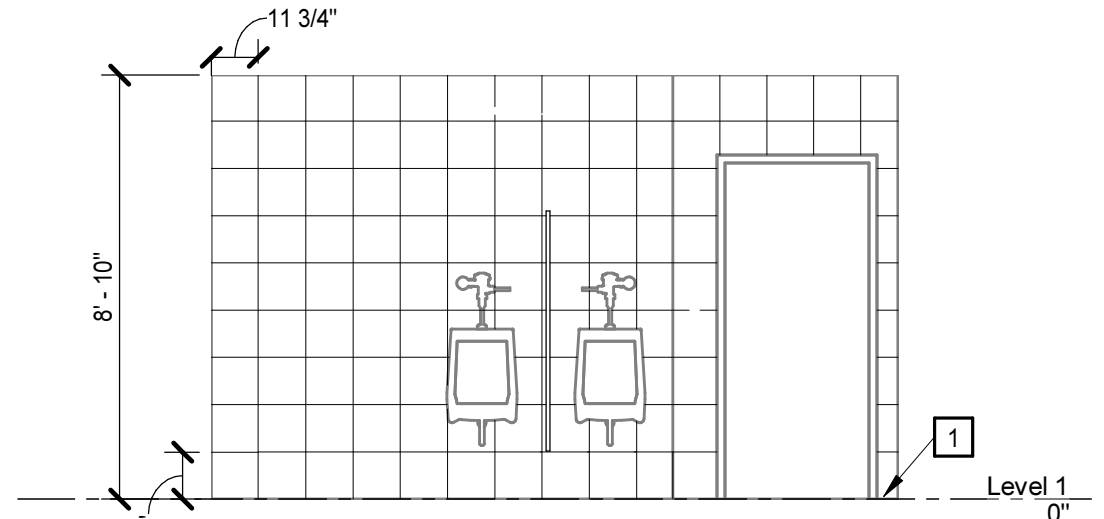
J
I
H
G
F
E
D
C
B
A



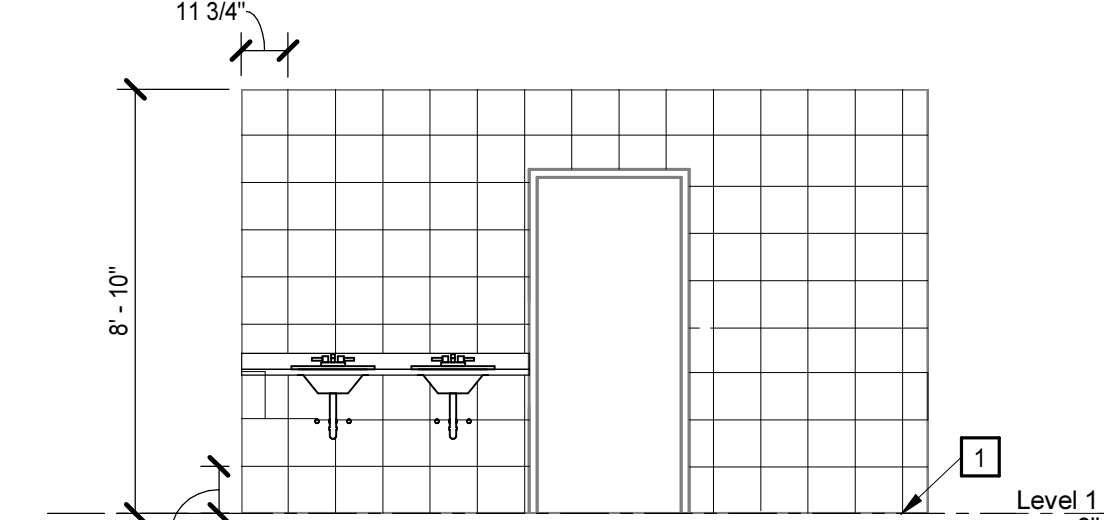
9 TOILET SECOND FLOOR - WEST
A1.2.1 | A7.1.1 1/4" = 1'-0"



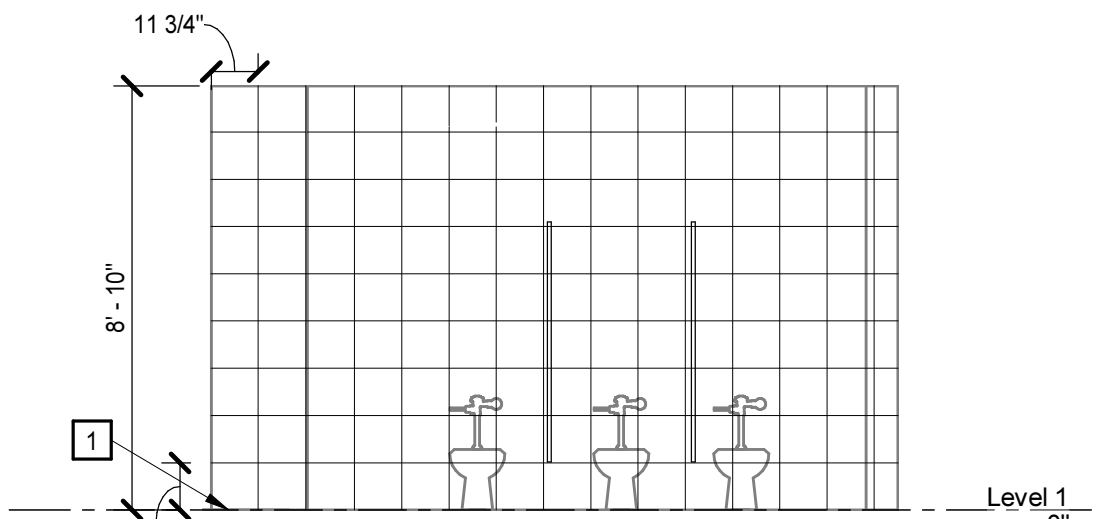
3 MEN'S RESTROOM FIRST FLOOR - EAST
A1.2.1 | A7.1.1 1/4" = 1'-0"



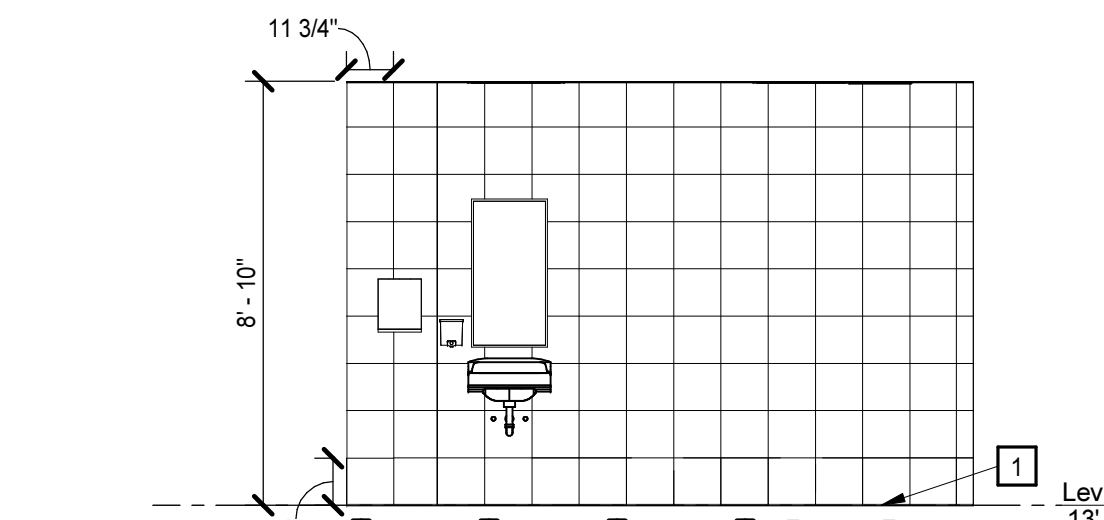
4 MEN'S RESTROOM FIRST FLOOR - WEST
A1.2.1 | A7.1.1 1/4" = 1'-0"



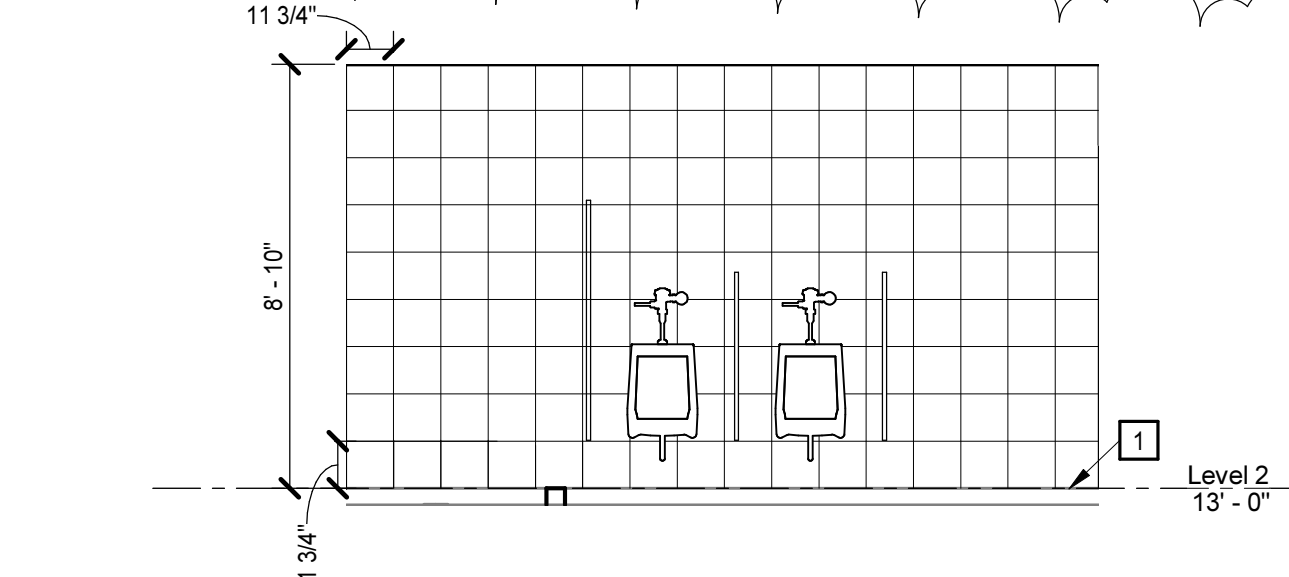
5 WOMEN'S RESTROOM FIRST FLOOR - EAST
A1.2.1 | A7.1.1 1/4" = 1'-0"



6 WOMEN'S RESTROOM FIRST FLOOR - WEST
A1.2.1 | A7.1.1 1/4" = 1'-0"

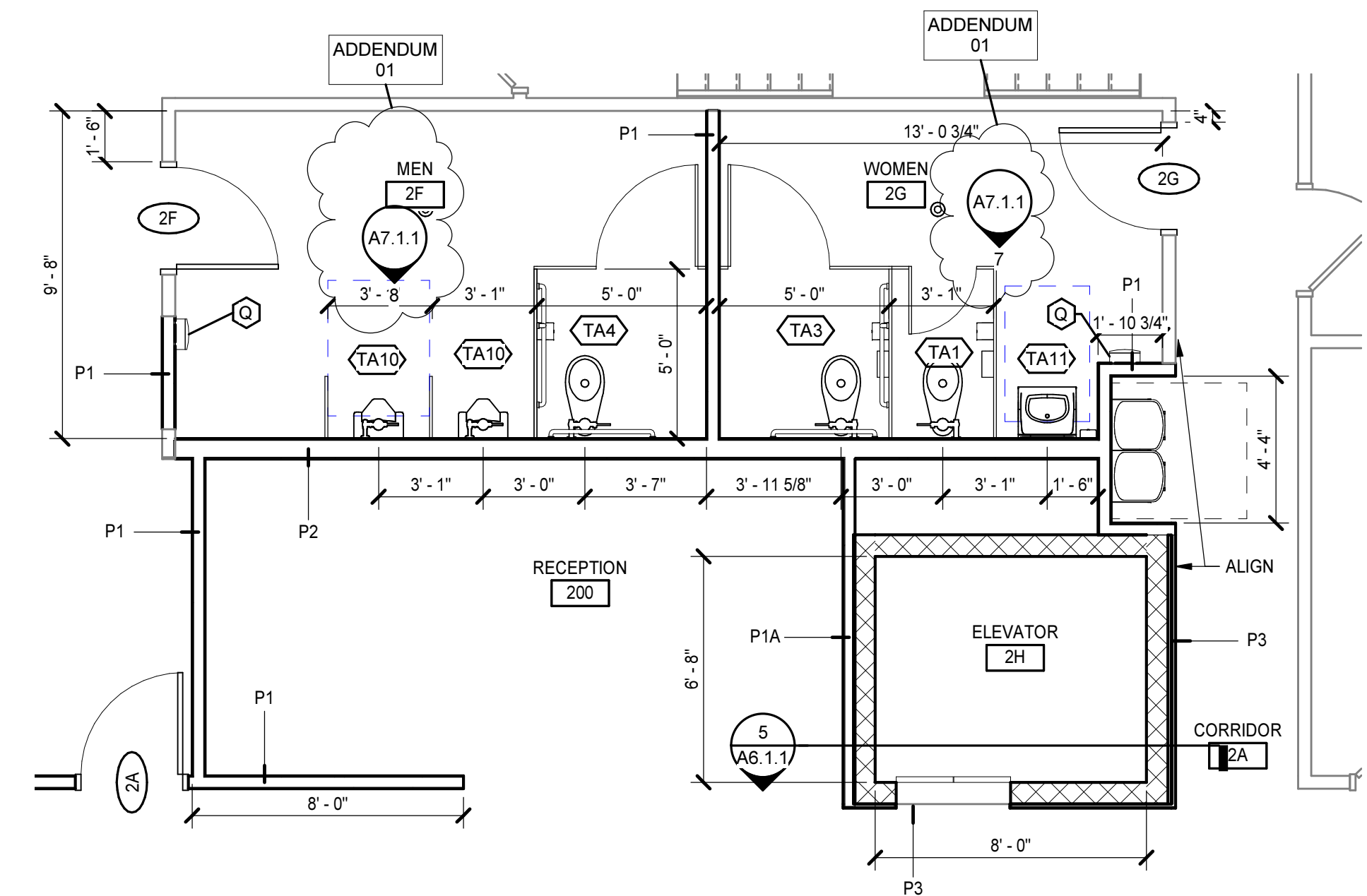


7 WOMEN'S RESTROOM SECOND FLOOR - SOUTH
A1.2.1 | A7.1.1 1/4" = 1'-0"

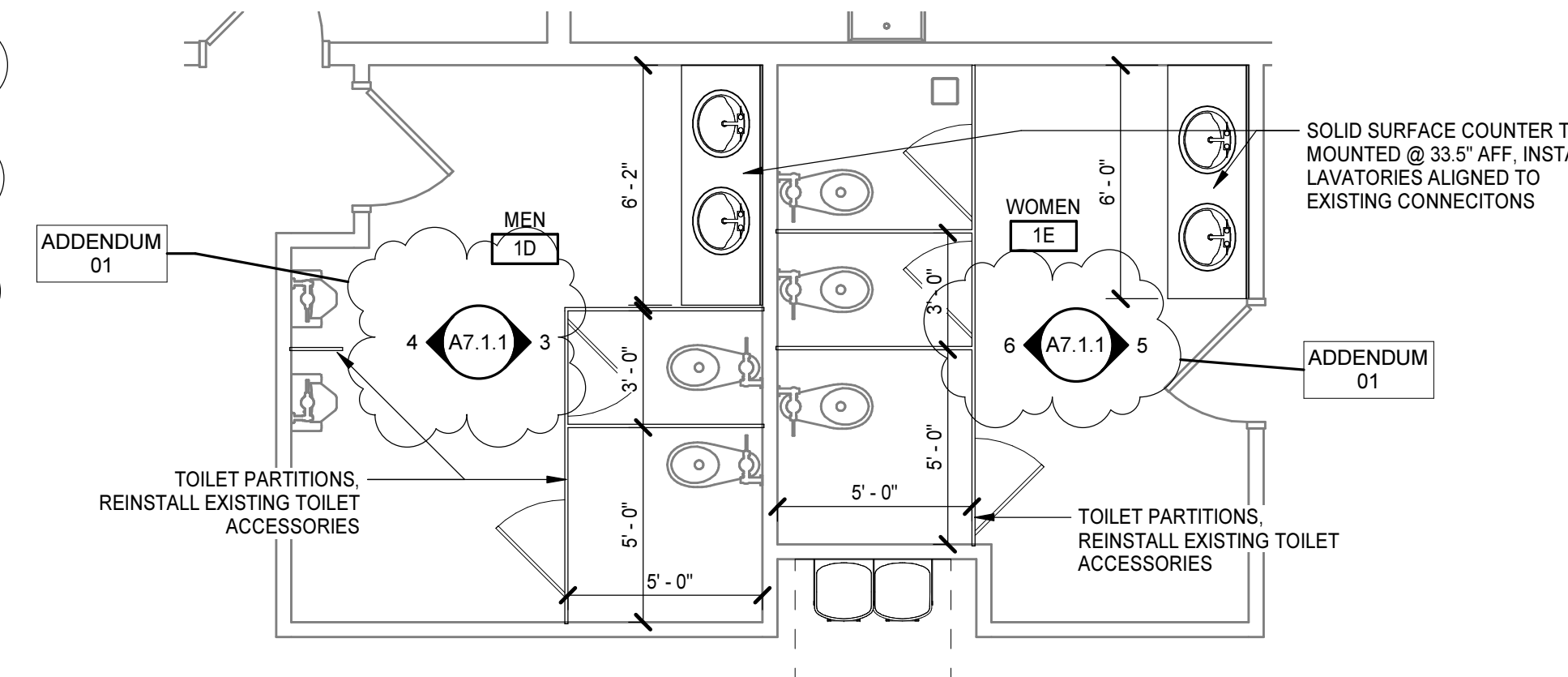


8 MEN'S RESTROOM SECOND FLOOR - SOUTH
A1.2.1 | A7.1.1 1/4" = 1'-0"

ADDENDUM
01



1 ENLARGED 2ND FLOOR PLAN
A2.1.1 | A7.1.1 1/4" = 1'-0"



2 ENLARGED 1ST FLOOR PLAN
A2.1.1 | A7.1.1 1/4" = 1'-0"

TOILET ASSEMBLIES, SCHEDULE AND ENLARGED PLAN GENERAL NOTES

A. PLAN DIMENSIONS ARE TO FACE OF WALL OR PARTITION. WHERE APPLIED FINISHES OCCUR, SUCH AS CERAMIC TILE, DIMENSIONS ARE TO FACE OF APPLIED FINISH. FOR WAINSCOTS, FLOOR PLAN DIMENSIONS ARE TO FACE OF WAINSCOT MATERIAL. APPLIED FINISHES ARE NOT ALLOWED TO REDUCE CLEAR DIMENSIONS. "APPLIED FINISHES" IN THIS CASE DO NOT INCLUDE TRIM, BASE, AND ACOUSTIC WALL PANELS.

B. CLEAR DIMENSIONS ARE TO FACE OF APPLIED WALL AND PARTITION FINISHES.

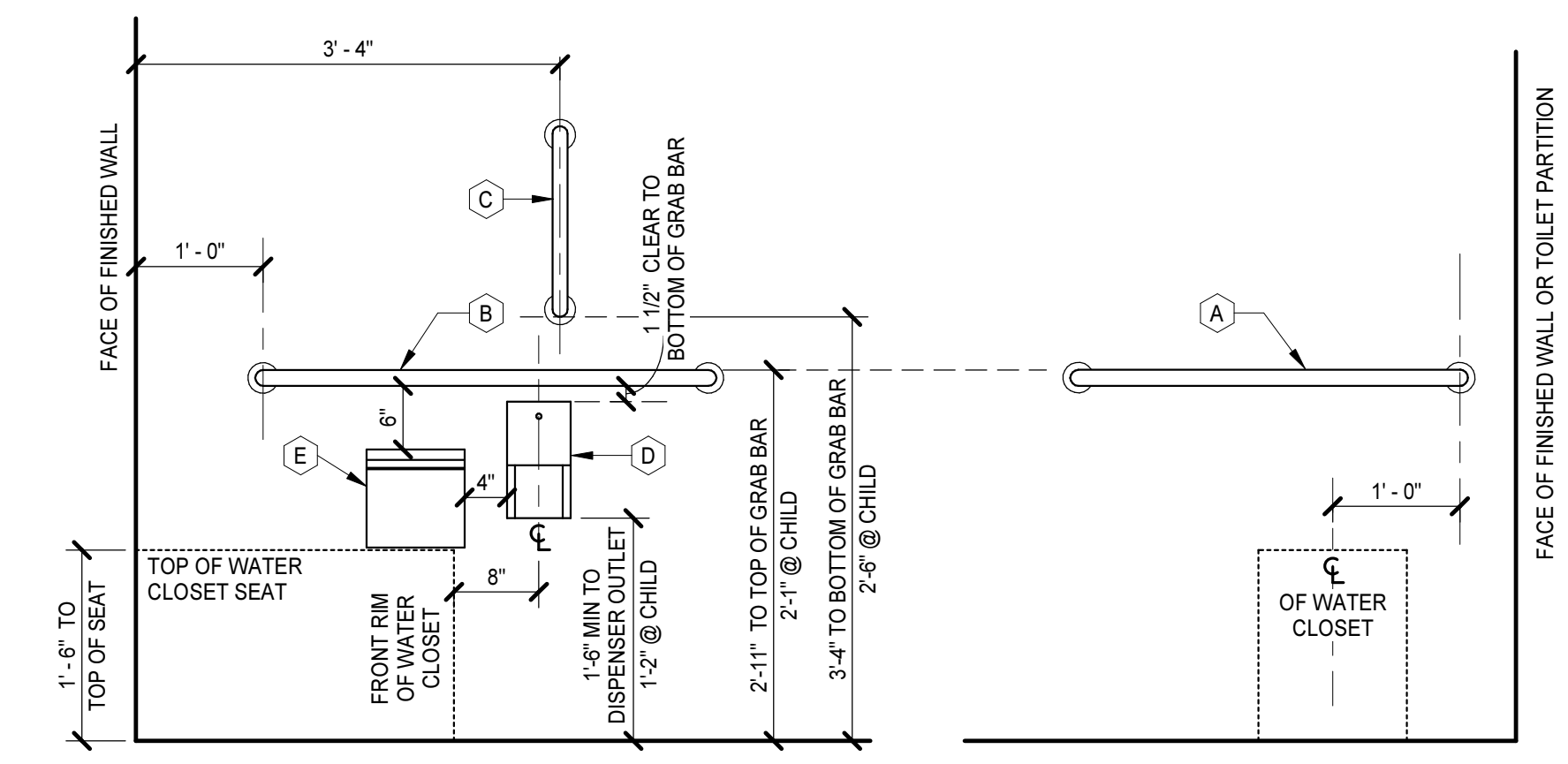
BUILDING ELEVATION KEYNOTES
REPRESENTED BY [E]
APPLIES TO DRAWINGS A7.1 - A7.nn

1 PROVIDE COVED METAL TRANSITION. REFER TO DIVISION 9, SECTION TILING

TOILET ASSEMBLIES					
APPLIES TO DRAWINGS A7.1 - A7.nn REPRESENTED BY TA#					
MARK	REMARKS	PLAN	MARK	REMARKS	PLAN
TA1			TA10		
TA2	OMIT [E]		TA11	CENTER [G] OVER LAVATORY	
TA3			TA12		
TA4	OMIT [E]		TA13	OMIT [C] [H] [J]	
TA5			TA14		
TA6	OMIT [E]		TA15		
TA7			LEGEND NOTES: A. HANDING/ORIENTATION MAY VARY. REFER TO PLANS FOR PROPER ORIENTATION. B. PLUMBING FIXTURE GRAPHICS IN THIS LEGEND ARE REPRESENTATIVE ONLY. ACTUAL PLUMBING FIXTURES MAY VARY. C. COAT/ROBE HOOKS INDICATED ON THE BACK OF TOILET COMPARTMENT DOORS ARE PART OF THE TOILET COMPARTMENT ASSEMBLY AND ARE NOT CONSIDERED A TOILET ACCESSORY.		
TA8	OMIT [E]				
TA9					

TOILET ACCESSORIES SCHEDULE			
MARK	DESCRIPTION	MOUNTING HEIGHT	REMARKS
A	36" HORIZONTAL GRAB BAR	REFER TO WATER CLOSET ELEVATIONS	
B	42" HORIZONTAL GRAB BAR	REFER TO WATER CLOSET ELEVATIONS	
C	18" VERTICAL GRAB BAR	REFER TO WATER CLOSET ELEVATIONS	
D	TOILET TISSUE DISPENSER	REFER TO WATER CLOSET ELEVATIONS	
E	SANITARY NAPKIN DISPOSAL	REFER TO WATER CLOSET ELEVATIONS	
F	SOAP DISPENSER	3'-4" AFF TO DISPENSING OUTLET	
G	MIRROR (18" x 36"), OVER LAV AND CONTERTOP	3'-4" AFF TO BOTTOM OF REFLECTIVE SURFACE	
Q	PAPER TOWEL DISPENSER	3'-5" AFF TO DISPENSING OUTLET	

- ACCESSORY ITEMS ARE IDENTIFIED BY [E] ON PLANS. LETTERS CORRESPOND TO SCHEDULE ABOVE.
- ACTUAL DIMENSIONS OF ACCESSORIES MAY VARY. COORDINATE DIFFERENCES, IF ANY.
- REFER TO ALL CASEWORK ELEVATIONS FOR ADDITIONAL TOILET ACCESSORY LOCATIONS.
- PROVIDE MOP AND BROOM HOLDER W/ SHELF [E] AT ALL CUSTODIAL/JANITORIAL SINKS. MOUNT AT 5'-0" AFF TO CENTERLINE AND LOCATE ON SIDE WALL OF SINK (NOT ON WALL ABOVE FAUCET).
- PROVIDE ROBE HOOK ON INTERIOR FACE OF ALL TOILET ROOM DOORS WHEREIN ONLY ONE WATER CLOSET IS PROVIDED. MOUNT AT 3'-11" AFF TO TOP.



WATER CLOSET ELEVATIONS
3/4" = 1'-0"



PROJECT NO:	801192
DATE:	3-30-2021
REVISIONS	
DATE	DESCRIPTION
10-08-21	ADDENDUM 01

EXISTING PANELBOARD				LO1		LOCATION: BREAK ROOM 107		FED FROM:					
100 AMP MLO				120/208 Wye		3 PH 4 W		MOUNT: RECESSED		PANEL ASSEMBLY RATED (KVA): 10 KAIC			
CKT	BRKR	POLE	LOAD		A	B	C	LOAD		POLE	BRKR	CKT	
1	20 A	1	COMP ROOM		0.0	0.0		RESTROOMS		1	20 A	2	
3	20 A	1	COMP ROOM (TRIPPED)			0.0	0.0	CUST OPER/FOYER		1	20 A	4	
5	20 A	1	COMP ROOM				0.0	0.0	CUST OPER OUTLETS		1	20 A	6
7	20 A	1	SALE OUTLETS		0.0	0.0		CUBICLES [1]		1	20 A	8	
9	20 A	1	SALE OUTLETS					CUBICLES [2]		1	20 A	10	
11	20 A	1	SALE OUTLETS				0.0	0.0	OUTSIDE LIGHTS		1	20 A	12
13	20 A	1	DEC CCT		0.0	0.0		CUST SERVICE LGT		1	20 A	14	
15	20 A	1	DEC CCT			0.0	0.0	CUST SERVICE LGT		1	20 A	16	
17	20 A	1	DEC CCT				0.0	0.0	CUST SERVICE LGT		1	20 A	18
19	20 A	1	BREAK RM LGT		0.0			OFFICE/CONF LGT		1	20 A	20	
21	20 A	1	BREAK RM REC			0.0	0.0	OFFICE/CONF REC		1	20 A	22	
23	20 A	1	BREAK RM REC					OFFICE/CONF REC		1	20 A	24	
25	30 A	2	WATER HEATER			1.0	0.0	COMPUTER ROOM [6]		1	20 A	26	
27	20 A	1				1.0	0.0	COMPUTER ROOM [7]		1	20 A	28	
29	20 A	2	AC			0.0	0.0	WATER HEATER (SCHWBKR DO NOT ALIGN)		2	20 A	30	
31	20 A	1	COMPUTER ROOM - UPS [OFF]			0.0	0.0	PRINTER (SCHWBKR DO NOT...)		1	20 A	32	
35	20 A	1	COPY MACHINE [OFF]				0.0	0.0	PRINTER (SCHWBKR DO NOT...)		1	20 A	36
37	20 A	1	PRINTER 117 (PB)		0.2	1.1		REC 116 (PB)		1	20 A	38	
39	20 A	1	PLOTTER 117 (PB)			0.2	0.4	REC 117 (PB)		1	20 A	40	
41	--	--	SPACE ONLY				0.0	0.2	ELEV INTERCOM LOBBY (L) (PB)		1	20 A	42
					2 kVA	1 kVA	0 kVA						

(GE) = PROVIDE GFCI BREAKER FOR EQUIPMENT, 6-50mA PER 2008 NEC 427.22. DED. NEUTRAL. (EB) = EXISTING BREAKER
(GP) = PROVIDE GFCI BREAKER FOR PERSONNEL, 4-6mA PER 2008 NEC 210.8. DED. NEUTRAL. (RB) = REPLACE BREAKER WITH SIZE INDICATED
(L) = PROVIDE LOCKOUT BREAKER TO PREVENT UNAUTHORIZED SWITCHING. (PB) = PROVIDE BREAKER IN EXISTING SPACE
(LC) = ROUTE TO LOAD VIA LIGHTING CONTACTOR, REF DETAIL ON DWG E4.X
(ML) = PROVIDE BREAKER WITH MAINTENANCE LOCKOUT, LOCKABLE OFF.

LOADS FOR EXISTING CIRCUITS ARE ASSUMED

Load Classification	Connected Load	Demand Factor	Estimated Demand	Panel Totals
INTERIOR LIGHTING	0 VA	0.00%	0 VA	
RECEPTACLES	1440 VA	100.00%	1440 VA	Total Conn. Load: 3.9 kVA
AC / HEAT PUMP	0 VA	0.00%	0 VA	Total Est. Demand: 3.9 kVA
ELECTRIC HEAT	0 VA	0.00%	0 VA	Total Conn. Current: 11 A
KITCHEN	0 VA	0.00%	0 VA	Total Est. Demand... 11 A
MISCELLANEOUS	2460 VA	100.00%	2460 VA	

EXISTING PANELBOARD				LO2		LOCATION: STORAGE 208A		FED FROM:			
100 AMP MCB			120/208 Wye		3 PH 4 W		MOUNT: RECESSED		PANEL ASSEMBLY RATED (KAIC), 10 KAIC		
CKT	BRKR	POLE	LOAD	A	B	C	LOAD	POLE	BRKR	CKT	
1	20 A	1	OFFICE LTG	0.0	0.0		REC	1	20 A	2	
3	20 A	1	REC		0.0	0.0	REC	1	20 A	4	
5	20 A	1	REC			0.0	0.0	1	20 A	6	
7	20 A	1	LTG	0.0	0.0		HALL LTG	1	20 A	8	
9	20 A	1	REC	0.0	0.0		KITCHEN	1	20 A	10	
11	20 A	1	WID ROOM			0.0	0.0	1	20 A	12	
13	20 A	1	KITCHEN COUNTER	0.0	0.0		EXEC RM #1	1	20 A	14	
15	20 A	1	KITCHEN COUNTER		0.0	0.0	EXEC RM #1	1	20 A	16	
17	20 A	1	KITCHEN COUNTER			0.0	0.0	1	20 A	18	
19	20 A	1	REC 200	0.7	0.0		SPARE	1	20 A	20	
21	20 A	1	RECIRC PUMP		0.5	0.0			20 A	22	
23	20 A	1	REC 205			1.4	0.0	2	30 A	24	
25	20 A	1	REC 210	0.7	0.0					26	
27	20 A	1	SPARE		0.0	0.0		AC	3	35 A	
29	20 A	1	SPARE				0.0	0.0		30	
31	20 A	1	OFFICE TV	0.0	0.0			SPACE ONLY	--	--	
33	20 A	1	REC			0.0	0.0	SPACE ONLY	--	--	
35	20 A	1	REC (BELOW PANEL)			0.0	0.0	SPACE ONLY	--	--	
37	20 A	1	CONF ROOM TV	0.0	0.0			SPACE ONLY	--	--	
39	20 A	1	CONF ROOM EWC		0.0	0.0		SPACE ONLY	--	--	
41	--	--	SPACE ONLY				0.0	0.2	EWC (GP) (PB)	1	
				1 kVA	1 kVA	2 kVA					

(GE) = PROVIDE GFCI BREAKER FOR EQUIPMENT, 6-50mA PER 2008 NEC 427.22. DED. NEUTRAL. (EB) = EXISTING BREAKER
(GP) = PROVIDE GFCI BREAKER FOR PERSONNEL, 4-6mA PER 2008 NEC 210.8. DED. NEUTRAL. (RB) = REPLACE BREAKER WITH SIZE INDICATED
(L) = PROVIDE LOCKOUT BREAKER TO PREVENT UNAUTHORIZED SWITCHING. (PB) = PROVIDE BREAKER IN EXISTING SPACE
(LC) = ROUTE TO LOAD VIA LIGHTING CONTACTOR, REF DETAIL ON DWG E4.X
(ML) = PROVIDE BREAKER WITH MAINTENANCE LOCKOUT, LOCKABLE OFF.

LOADS FOR EXISTING CIRCUITS ARE ASSUMED

Load Classification	Connected Load	Demand Factor	Estimated Demand	Panel Totals
INTERIOR LIGHTING	0 VA	0.00%	0 VA	
RECEPTACLES	2340 VA	100.00%	2340 VA	Total Conn. Load: 3.6 kVA
AC / HEAT PUMP	0 VA	0.00%	0 VA	Total Est. Demand: 3.6 kVA
ELECTRIC HEAT	0 VA	0.00%	0 VA	Total Conn. Current: 10 A
KITCHEN	0 VA	0.00%	0 VA	Total Est. Demand... 10 A
MISCELLANEOUS	1220 VA	100.00%	1220 VA	

EXISTING PANELBOARD				LW1-1		LOCATION: WAREHOUSE 01 S1		FED FROM:			
200 AMP MCB				120/208 WYE		3 PH 4 W		MOUNT: SURFACE			
						PANEL AMPERAGE RATED (KAIC):		10 KAIC			
CKT	BRKR	POLE	LOAD	A	B	C	LOAD	POLE	BRKR	CKT	
1				0.0	0.0					2	
3	100 A	3	DOWNSTAIRS				AC 6	3	50 A	4	
5					0.0	0.0				6	
7	20 A	1	ALARM	0.0	0.0					8	
9	20 A	1	GARAGE STAIR		0.0	0.0		SPARE [?]	3	30 A	10
11	20 A	1	GARAGE DOOR			0.0	0.0			12	
13	20 A	1	TELE BB	0.0	0.0					14	
15					0.0	0.0		BATTERY CHARGER	2	20 A	16
17	20 A	2	EX LOAD				0.0	0.0		18	
19				0.0	0.0			WELDER	20	20	20
21	30 A	2	EX LOAD		0.0	0.0				22	
23	15 A	1	MINI SPLIT			0.0	0.0	AIR COMP (OFF)	2	40 A	24
25	20 A	1	REC 120, 121	0.7	0.2					26	
27	20 A	1	REC OFFICE 118		0.5	0.2		ELEVATOR (PB)	3	60 A	28
29	20 A	1	SPARE [?]			0.0	0.2			30	
31	20 A	1	SPARE [?]	0.0	0.5			ELEV LIGHTS (PB)	1	20 A	32
33	20 A	1	SPARE [?]		0.0	0.2		ELEV PIT REC (PB)	1	20 A	34
35	20 A	1	TR REC			0.0	0.2	ELEV SUMP (PB)	1	20 A	36
37	20 A	1	SPARE [?]	0.0	0.2			VENDING 107	1	38	38
39	20 A	1	SPARE [?]		0.0	0.2		VENDING 107	1	20 A	40
41	--	--	SPACE ONLY			0.0	0.2	REC 108	1	20 A	42
				2 kVA	1 kVA	1 kVA					

(GE) = PROVIDE GFCI BREAKER FOR EQUIPMENT, 6-50mA PER 2008 NEC 427.22. DED. NEUTRAL. (EB) = EXISTING BREAKER
(GP) = PROVIDE GFCI BREAKER FOR PERSONNEL, 4-6mA PER 2008 NEC 210.8. DED. NEUTRAL. (RB) = REPLACE BREAKER WITH SIZE INDICATED
(L) = PROVIDE LOCKOUT BREAKER TO PREVENT UNAUTHORIZED SWITCHING. (PB) = PROVIDE BREAKER IN EXISTING SPACE
(LC) = ROUTE TO LOAD VIA LIGHTING CONTACTOR, REF DETAIL ON DWG E4.X
(ML) = PROVIDE BREAKER WITH MAINTENANCE LOCKOUT, LOCKABLE OFF.

LOADS FOR EXISTING CIRCUITS ARE ASSUMED

Load Classification	Connected Load	Demand Factor	Estimated Demand	Panel Totals
INTERIOR LIGHTING	0 VA	0.00%	0 VA	
RECEPTACLES	2160 VA	100.00%	2160 VA	Total Conn. Load: 3.2 kVA
AC / HEAT PUMP	0 VA	0.00%	0 VA	Total Est. Demand: 3.2 kVA
ELECTRIC HEAT	0 VA	0.00%	0 VA	Total Conn. Current: 9 A
KITCHEN	0 VA	0.00%	0 VA	Total Est. Demand... 9 A
MISCELLANEOUS	1000 VA	100.00%	1000 VA	

PANELBOARD SCHEDULE			LW2-5		LOCATION: WAREHOUSE 02 S2		FED FROM: LW2-3							
100 AMP MCB			120/208 Wye		3 PH 4 W		MOUNT: SURFACE		PANEL ASSEMBLY RATED (KAIC): 10K					
CKT	BRKR	POLE	LOAD						LOAD					
						A	B	C		POLE	BRKR	CKT		
1	20 A	1	RECEPTACLES		0.2	0.1				240V OUTLET	2	30 A	2	
3	20 A	1	CEILING RECEPTACLES			0.4	0.1				4		4	
5	20 A	1	CEILING RECEPTACLES					0.4	0.5	FUTURE FANS	1	20 A	8	
7	20 A	1	CEILING RECEPTACLES		0.4	0.5				FUTURE FANS	1	20 A	8	
9	20 A	1	QUAD RECEPTACLES				0.4	0.5		FUTURE FANS	1	20 A	10	
11	20 A	1	QUAD RECEPTACLES					0.4	0.5	FUTURE FANS	1	20 A	12	
13	20 A	1	QUAD RECEPTACLES		0.4	0.0				SPACE ONLY	--	--	14	
15	20 A	1	QUAD RECEPTACLES				0.4	0.0		SPACE ONLY	--	--	16	
17	20 A	1	SECURITY						0.5	0.0	SPACE ONLY	--	--	18
19	20 A	1	SPARE		0.0	0.8							20	
21	20 A	1	SPARE				0.0	0.8		EF-1 (ML)	3	20 A	22	
23	20 A	1	SPARE					0.0	0.8				24	
25	20 A	1	SPARE		0.0	0.8							26	
27	20 A	1	SPARE				0.0	0.8		EF-2 (ML)	3	20 A	28	
29	20 A	1	SPARE					0.0	0.8				30	
						3 kVA	3 kVA	4 kVA						

(GE) = PROVIDE GFCI BREAKER FOR EQUIPMENT, 6-50mA PER 2008 NEC 427.22. DED. NEUTRAL.
(GP) = PROVIDE GFCI BREAKER FOR PERSONNEL, 4-6mA PER 2008 NEC 210.8. DED. NEUTRAL.
(L) = PROVIDE LOCKOUT BREAKER TO PREVENT UNAUTHORIZED SWITCHING.
(LC) = ROUTE TO LOAD VIA LIGHTING CONTACTOR, REF DETAIL ON DWG E4.X
(ML) = PROVIDE BREAKER WITH MAINTENANCE LOCKOUT, LOCKABLE OFF.

Load Classification	Connected Load	Demand Factor	Estimated Demand	Panel Totals
INTERIOR LIGHTING	0 VA	0.00%	0 VA	
RECEPTACLES	2700 VA	100.00%	2700 VA	Total Conn. Load: 10.4 kVA
AC / HEAT PUMP	5000 VA	100.00%	5000 VA	Total Est. Demand: 10.4 kVA
ELECTRIC HEAT	0 VA	0.00%	0 VA	Total Conn. Current: 29 A
KITCHEN	0 VA	0.00%	0 VA	Total Est. Demand... 29 A
MISCELLANEOUS	2680 VA	100.00%	2680 VA	

POWER LEGEND

SYMBOL DESCRIPTION

- ⚡ APPLIANCE RECEPTACLE, MOUNT AT +1'-6" AFF. PROVIDE NEMA CONFIGURATION TO MATCH PLUG FOR EQUIPMENT SERVED.
- ⚡ DUPLEX RECEPTACLE, NEMA 5-20R, MOUNT AT +1'-6" AFF.
- ⚡ DUPLEX RECEPTACLE, NEMA 5-20R, MOUNT AT +3'-10" AFF.
- ⚡ GFCI DUPLEX RECEPTACLE, NEMA 5-20R, MOUNT AT +1'-6" AFF. PROVIDE NEMA 3R "WHILE IN USE" ENCLOSURE.
- ⚡ GFCI DUPLEX RECEPTACLE, NEMA 5-20R, MOUNT AT +1'-6" AFF.
- ⚡ GFCI DUPLEX RECEPTACLE, NEMA 5-20R, MOUNT AT +3'-10" AFF.
- ⚡ DOUBLE DUPLEX RECEPTACLE, NEMA 5-20R, MOUNT AT +1'-6" AFF.
- ⚡ DOUBLE DUPLEX RECEPTACLE, NEMA 5-20R, MOUNT AT +3'-10" AFF.
- TV OUTLET, DUPLEX OUTLET ADJACENT TO COMM OUTLET.
- POWER/COMMUNICATIONS RECESSED FLOOR BOX. SUBSCRIPT NUMBER INDICATES OUTLET TYPE. REFER TO DETAIL ON E4 SERIES DRAWINGS.
- POWER/COMMUNICATIONS POKE THRU FLOOR BOX. SUBSCRIPT NUMBER INDICATES OUTLET TYPE. REFER TO DETAIL ON E4 SERIES DRAWINGS.
- SYSTEM FURNITURE FLEX POWER CABLE CONNECTION VIA FLUSH WALL BOX MOUNTED 4" AFF. COORDINATE W/FURNITURE PROVIDER PRIOR TO ROUGH-IN.
- CORD REEL OUTLET, CEILING MOUNT.
- Ⓜ JUNCTION BOX, CONCEALED ABOVE CEILING, UNO.
- Ⓜ ENCLOSED CIRCUIT BREAKER, CHARACTERISTICS AS INDICATED.
- Ⓜ MUSHROOM SWITCH, HEAVY DUTY WITH LEGEND PLATE, MOUNT WHANDLE AT +3'-10" AFF, UNO.
- Ⓜ MANUAL MOTOR SWITCH, OVERLOAD PROTECTION AS REQUIRED PER NAME PLATE RATINGS, WITH 'ON' INDICATOR PILOT LIGHT. FLUSH MOUNT WHANDLE AT +3'-10" AFF, UNO.
- Ⓜ DISCONNECT SWITCH, FUSIBLE OR NON-FUSIBLE AS INDICATED. MOUNT WHANDLE AT +4'-6" AFF, UNO.
- Ⓜ MAGNETIC MOTOR STARTER, WITH OVERLOAD RELAYS AS REQUIRED TO SERVE MANUFACTURER REQUIREMENTS OF EQUIPMENT SERVED. PROVIDE WITH HAND-OFF-AUTOMATIC SELECTOR SWITCH AND INDICATOR LIGHTS. MOUNT WHANDLE AT +4'-6" AFF, UNO.
- Ⓜ COMBINATION MAGNETIC STARTER AND DISCONNECT SWITCH, WITH OVERLOAD ELEMENTS AND FUSING AS REQUIRED TO SERVE MANUFACTURER REQUIREMENTS OF EQUIPMENT SERVED. PROVIDE WITH HAND-OFF-AUTOMATIC SELECTOR SWITCH AND INDICATOR LIGHTS. MOUNT WHANDLE AT +4'-6" AFF, UNO.
- Ⓜ EQUIPMENT POWER CONNECTION.
- Ⓜ MOTOR CONNECTION.
- Ⓜ CONNECTION TO DIV 23 MOTORIZED DAMPER, VERIFY LOCATION.
- Ⓜ POWER FOR ELECTRIC DOOR LOCK CONNECTION.
- Ⓜ EMERGENCY GENERATOR.
- BRANCH CIRCUIT RUN CONCEALED, UNO. DASHED INDICATES CIRCUITRY REQUIRED TO BE RUN BELOW SLAB.
- BRANCH CIRCUIT HOME RUN TO PANELBOARD AND CIRCUIT INDICATED.
- PANELBOARD.
- Ⓜ TRANSFORMER, PROVIDE CONCRETE HOUSEKEEPING PAD UNLESS NOTED OTHERWISE.
- Ⓜ RELAY, NO OR NC AS INDICATED.
- Ⓜ RELAY, NORMALLY OPEN.
- Ⓜ RELAY, NORMALLY CLOSED.
- Ⓜ FEEDER TAG. REFER TO FEEDER SCHEDULE ON DWG E5.1.

SECURITY LEGEND

SYMBOL DESCRIPTION

- Ⓜ DPS DOOR POSITION SWITCH. REFER TO DETAIL ON DRAWING E5.1
- Ⓜ CR CARD READER, MOUNT AT 5'-10" AFF. REFER TO DETAIL ON DRAWING E5.1
- Ⓜ EL ELECTRIC DOOR LOCK. REFER TO DETAIL ON DRAWING E5.1

COMMUNICATIONS LEGEND

SYMBOL DESCRIPTION

- ⚡ TELECOMMUNICATIONS OUTLET, MOUNT AT +3'-10" AFF. REFER TO TYPICAL COMMUNICATION OUTLET DETAIL ON DRAWING E5.1
- ⚡ TELECOMMUNICATIONS OUTLET, MOUNT AT +1'-6" AFF. REFER TO TYPICAL COMMUNICATION OUTLET DETAIL ON DRAWING E5.1
- ⚡ ELEVATOR RESCUE ASSISTANCE INTERCOM, MOUNT AT +4'-6" AFF. "M" INDICATES MASTER STATION LOCATION. REFER TO DETAIL ON DRAWING E5.1
- ⚡ TV OUTLET, MOUNT AT 5'-6" AFF. REFER TO DETAIL ON DRAWING E5.1
- ⚡ POWER/COMMUNICATIONS RECESSED FLOOR BOX. REFER TO TYPICAL COMMUNICATION OUTLET DETAIL ON DRAWING E5.1
- ⚡ POWER/COMMUNICATIONS POKE-THRU FLOOR BOX. REFER TO TYPICAL COMMUNICATION OUTLET DETAIL ON DRAWING E5.1
- ⚡ SYSTEM FURNITURE FLEX COMMUNICATIONS CONNECTION VIA FLUSH WALL BOX MOUNTED 4" AFF. PROVIDE 1/2" CONDUIT WITH BUSHING FROM BOX TO ABOVE CEILING. COORDINATE WITH FURNITURE PROVIDER PRIOR TO ROUGH-IN.
- ⚡ WIRELESS ACCESS POINT. PROVIDE TWO CAT 6 DATA CABLES WITH 2' SPARE COILED AT OWNER PROVIDED DEVICE.
- ⚡ TELECOMMUNICATIONS EQUIPMENT RACK.
- ⚡ TELECOMMUNICATIONS GROUND BUS BAR, MOUNT AT +1'-6" AFF.

LIGHTING LEGEND

SYMBOL DESCRIPTION

- Ⓜ LIGHT SWITCH, RATED 120/277 VOLTS, 20-AMPS, MOUNT AT +3'-10" AFF. SUBSCRIPT/SUPERSCRIP LETTERS, NUMBERS, AND SYMBOLS INDICATES SWITCH TYPE AS FOLLOWS:
- 3 INDICATES 3-WAY LIGHT SWITCH
- 4 INDICATES 4-WAY LIGHT SWITCH
- D INDICATES DIMMER SWITCH
- P INDICATES PILOT LIGHT, ON WHEN SWITCH IS ON
- K INDICATES KEY OPERATED LIGHT SWITCH
- OS INDICATES SWITCH WITH INTEGRAL OCCUPANCY SENSOR
- OD INDICATES DIMMER SWITCH WITH INTEGRAL OCCUPANCY SENSOR
- LOWER CASE LETTER INDICATES LIGHT FIXTURE CONTROL DESIGNATION
- Ⓜ OMNI-DIRECTIONAL LIGHTING CONTROL OCCUPANCY DETECTOR, CEILING MOUNT.
- Ⓜ LIGHT FIXTURE, CEILING MOUNT.
- Ⓜ LIGHTING FIXTURE.
- Ⓜ LIGHT FIXTURE, WALL MOUNT, HEIGHT AS INDICATED.
- Ⓜ EMERGENCY EGRESS LIGHTING FIXTURE, WITH BATTERY PACK, WALL MOUNT AT +8'-0" AFF.
- Ⓜ EXIT SIGN, CEILING MOUNT, DIRECTIONAL ARROWS AS INDICATED. SHADING INDICATES FACE(S) OF SIGN.
- Ⓜ EXIT SIGN, WALL MOUNT, DIRECTIONAL ARROWS AS INDICATED. SHADING INDICATES FACE(S) OF SIGN.
- Ⓜ EXIT SIGN WITH EMERGENCY EGRESS LIGHTING FIXTURE, WITH BATTERY PACK.

DEMOLITION LEGEND

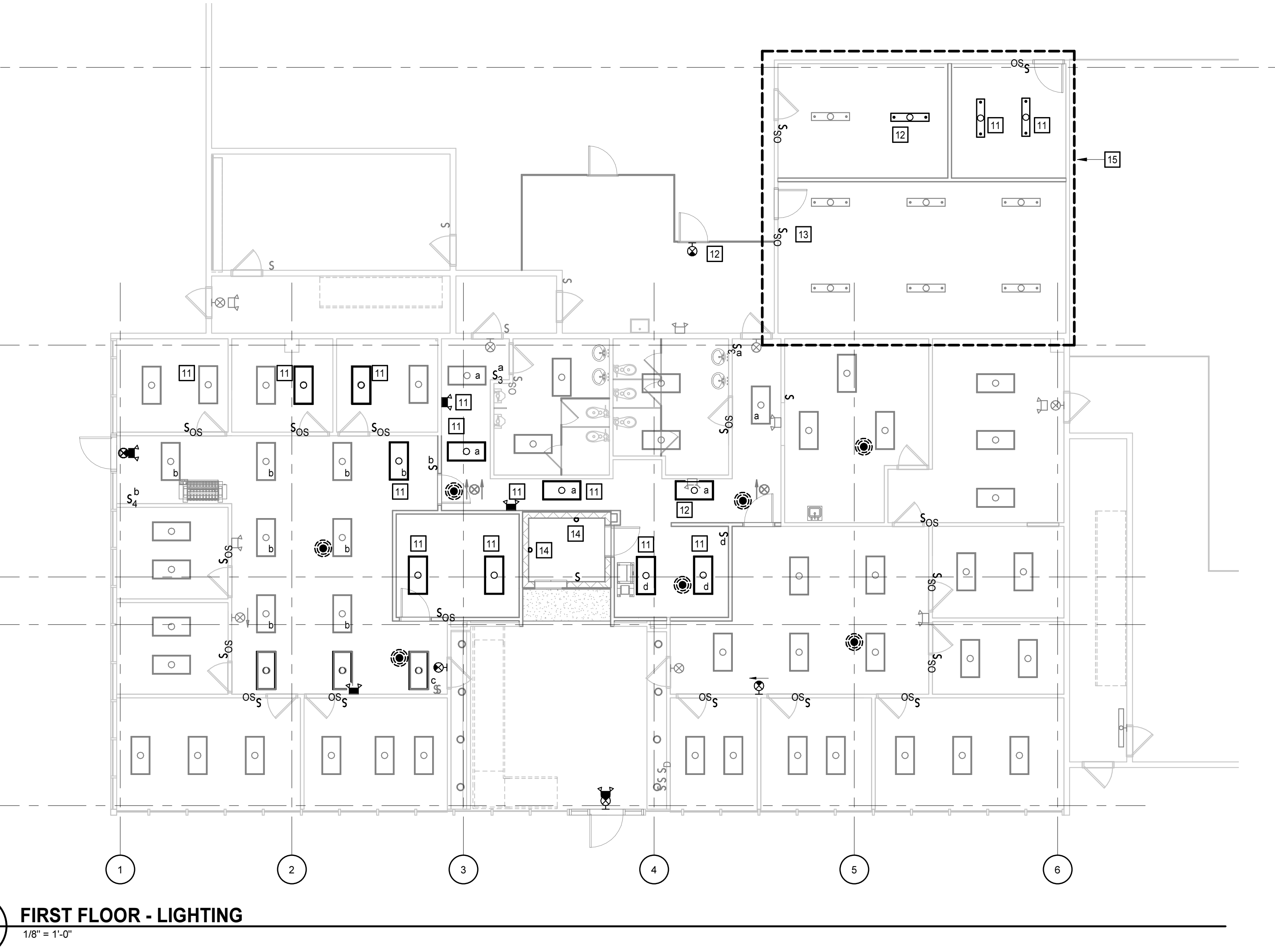
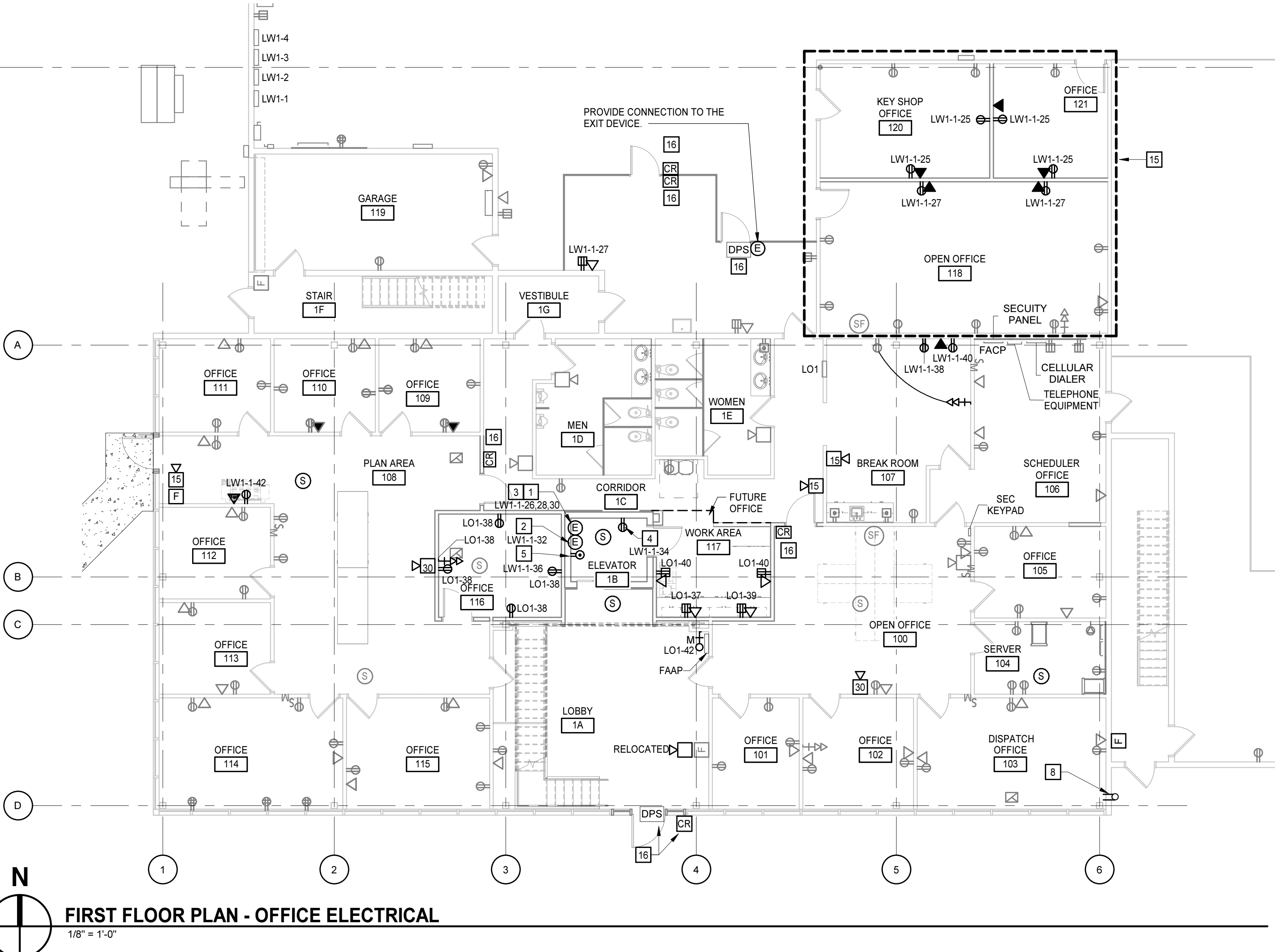
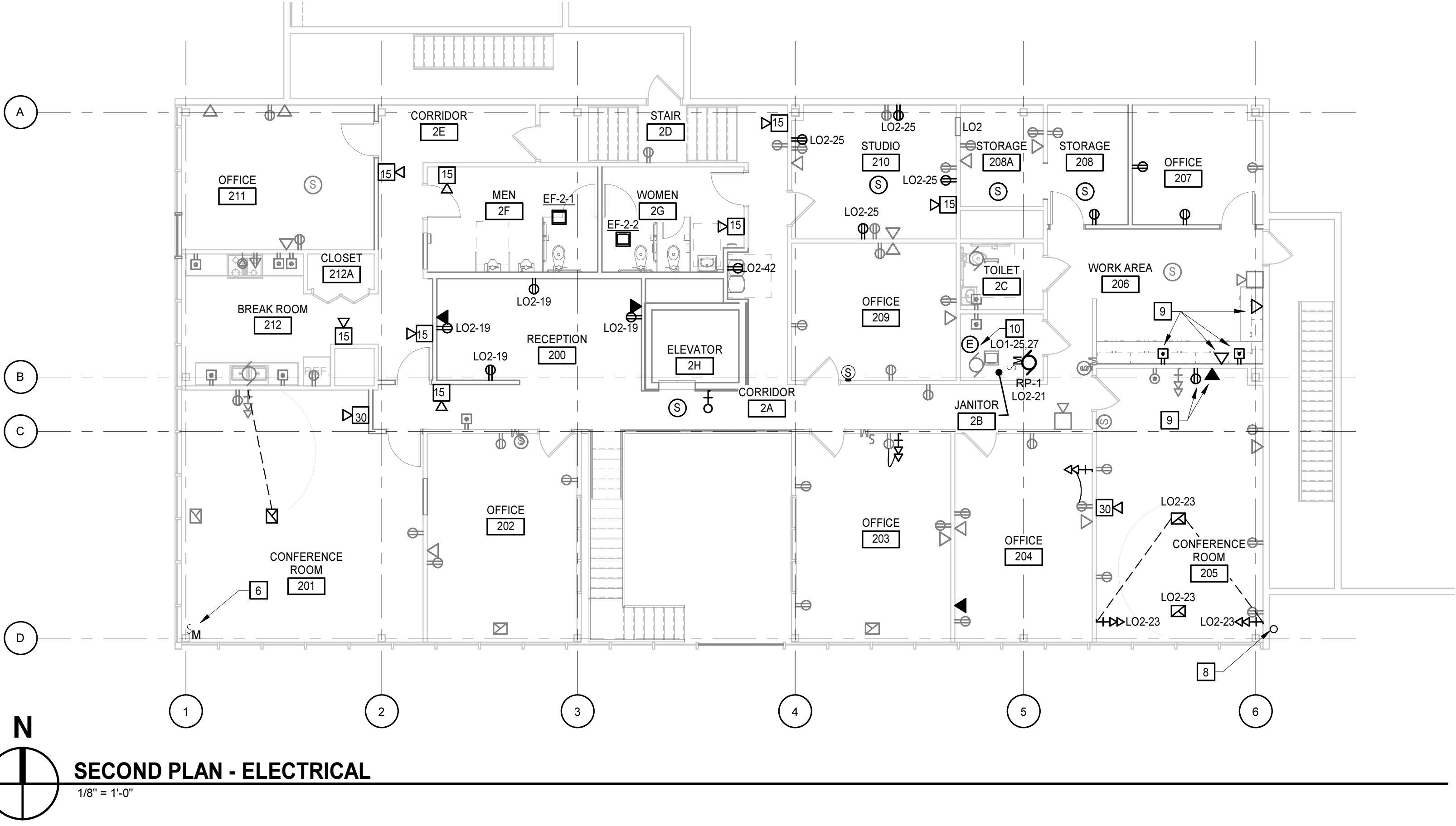
SYMBOL DESCRIPTION

- Ⓜ REMOVE DEVICES, EQUIPMENT, IN ACCORDANCE WITH THE GENERAL DEMOLITION NOTES.
- Ⓜ DEVICES ARE EXISTING TO REMAIN.
- WITHIN HATCHED AREAS, DISCONNECT AND REMOVE ALL ELECTRICAL MATERIALS INCLUDING BUT NOT LIMITED TO LIGHTS, DEVICES, EQUIPMENT, SPEAKERS, FIRE ALARM, COMMUNICATIONS, AND CIRCUITRY.

GENERAL DEMOLITION NOTES

- A. PROVIDE ALL ELECTRICAL DEMOLITION WORK REQUIRED TO INSTALL THE WORK INDICATED. REMOVE, REPAIR, AND RECONNECT ALL BRANCH CIRCUITS THAT WILL REMAIN IN USE BUT INTERFERES WITH THE WORK.
- B. REMOVE ALL EXISTING CONDUITS THAT WILL NOT BE REUSED AND WHERE THEY WILL BE EXPOSED AFTER COMPLETION, ABANDON ALL OTHERS IN THE WALLS ONLY. DISCONNECT ALL WIRING INDICATED AND/OR REQUIRED TO BE REMOVED FROM ALL POWER SOURCES. REMOVE ALL WIRING FROM ABANDONED CONDUITS AND PROVIDE BLANK COVER PLATES FOR BOXES NOT UTILIZED FOR THE WORK.
- C. MAINTAIN CONTINUITY OF ALL EXISTING CIRCUITS TO REMAIN OR PORTIONS THEREOF AFFECTED BY THE WORK.
- D. BEFORE DEMOLITION, VERIFY WITH THE OWNER ALL EQUIPMENT TO BE SALVAGED TO OWNER AND NOT REMOVED FROM THE SITE. FOR ALL REMAINING EQUIPMENT INDICATED FOR REMOVAL, (AND NOT RELOCATED), REMOVE AND DISPOSE IN A LEGAL MANNER.
- E. EXERCISE CARE IN REMOVING DEMOLITION ITEMS. REPAIR

DIV 23 ELECTRICAL CONNECTION SCHEDULE SECOND FLOOR									
TAG	VOLTAGE	# POLES	LOAD	PANEL	CCT#	WIRE	DISCONNECTING MEANS	REMARKS	
EF-2-1	120 V	1	0.0 KVA			2#12 #125,3/4" C	MOTOR RATED SWITCH	CONNECT TO LOCAL LIGHTING CIRCUIT AND CONTROL	
EF-2-2	120 V	1	0.0 KVA			2#12 #125,3/4" C	MOTOR RATED SWITCH	CONNECT TO LOCAL LIGHTING CIRCUIT AND CONTROL	



KEYNOTES

APPLIES TO DRAWING E2.1
REPRESENTED BY ADD#1

1. PROVIDE A 60A 3P, 208V CONNECTION TO ELEVATOR POWER. VERIFY OVERCURRENT RATING WITH ELEVATOR PROVIDER AND ADJUST ACCORDINGLY.

2. PROVIDE A 120V CONNECTION FOR ELEVATOR LIGHTS. ALSO PROVIDE 120V CIRCUIT BREAKER FOR ELEVATOR DOORS AND LOWERING DEVICE.

3. CONNECT SHUNT TRIP CONTROLLED FROM FIRE ALARM CONTROL MODULE FOR ELEVATOR RECALL.

4. RECEPTACLE SERVES ELEVATOR PIT SUMP PUMP. COORDINATE WITH SUMP PUMP LOCATION.

5. GFCI RECEPTACLE IN ELEVATOR PIT. CONNECT PIT LIGHTING TO LINE SIDE OF THE OUTLET.

6. FUTURE MOTORIZED WINDOW SHADE CONNECTION. PROVIDE 2x4 BOX WITH 3/4" EC TO ABOVE CEILING.

7. PROVIDE CONDUIT FROM FLOOR BOX TO TV CONNECT VIA FIRST FLOOR CEILING.

8. PROVIDE 3" EC TO ROOF ON EXTERIOR OF THE BUILDING STUBBED INTO FIRST FLOOR CEILING. REFER TO WEATHERHEAD DETAIL FOR ROOF TERMINATION.

9. REMOVE EXISTING WIRING DEVICE AND RE-INSTALL AT HEIGHT INDICATED. RECONNECT POWER OUTLET TO EXISTING CIRCUIT.

10. RELOCATE POWER CONNECTION FOR WATER HEATER AS INDICATED.

11. RELOCATE EXISTING LIGHTING FIXTURE AND RECONNECT TO LOCAL CIRCUIT AND CONTROLS AS INDICATED.

12. PROVIDE LIGHTING FIXTURE TO MATCH EXISTING AND RECONNECT TO LOCAL CIRCUIT AND CONTROLS AS INDICATED.

13. RECONNECT EXISTING FIXTURES TO CONTROLS AS INDICATED.

14. PROVIDE A VAPORTIGHT FIXTURE (LITHONIA MODEL# XVML-L48-500LM-MVOLT-50K-80CRI OR EQUAL) MOUNTED VERTICALLY ON THE SIDE WALL ON THE ELEVATOR SHAFT. PROVIDE A WATER RESISTANT SWITCH AT EACH ELEV DOOR OPENING. CONNECT FIXTURES TO THE LINE SIDE OF THE GFCI OUTLET.

15. WORK IN THIS AREA SHALL BE BID AS ALTERNATE #1