

Solid Waste Update



UNIONCOUNTY
north carolina

An aerial photograph of a wastewater treatment facility. In the foreground, there is a large, dark asphalt parking lot with several white parking spaces. To the left of the parking lot is a long, low building with a white roof. To the right of the parking lot is a large, dark, rectangular pond. In the background, there are several buildings, including a large white building and a smaller yellow building. The area is surrounded by green trees and grass.

Agenda

01 Overview/Dept. SW Programs

02 CIP Projects

03 Trash Pass Program

04 Efficiency Expectations

Solid Waste Program Elements

- **Municipal Solid Waste (MSW) Transfer Station**
 - Waste is transferred to Anson County Landfill
 - Commercial Operation
 - Tip Fee/Enterprise Fund
- **Construction and Demolition (C&D) Landfill**
 - Commercial and Residential
 - Waste deposited on site
 - Tip Fee/Enterprise Fund
- **Residential Waste and Recycling Centers**
 - 5 Residential Waste & Recycling Centers (**RWRCs**)
 - Residential bagged household and recycling services
 - Bag based Trash Pass allows for Free bagged household trash disposal within bag limits.
 - Funded via SW Enterprise Fund and GF

Programs Cont.

🌿 Solid Waste Education and Outreach

- UCPS
- Civic Groups
- Volunteer Organizations

🌿 Litter Mitigation

- PT Staff Efforts
- Litter Kits Program/Volunteer Coordination

🌿 Household Hazardous Waste Disposal

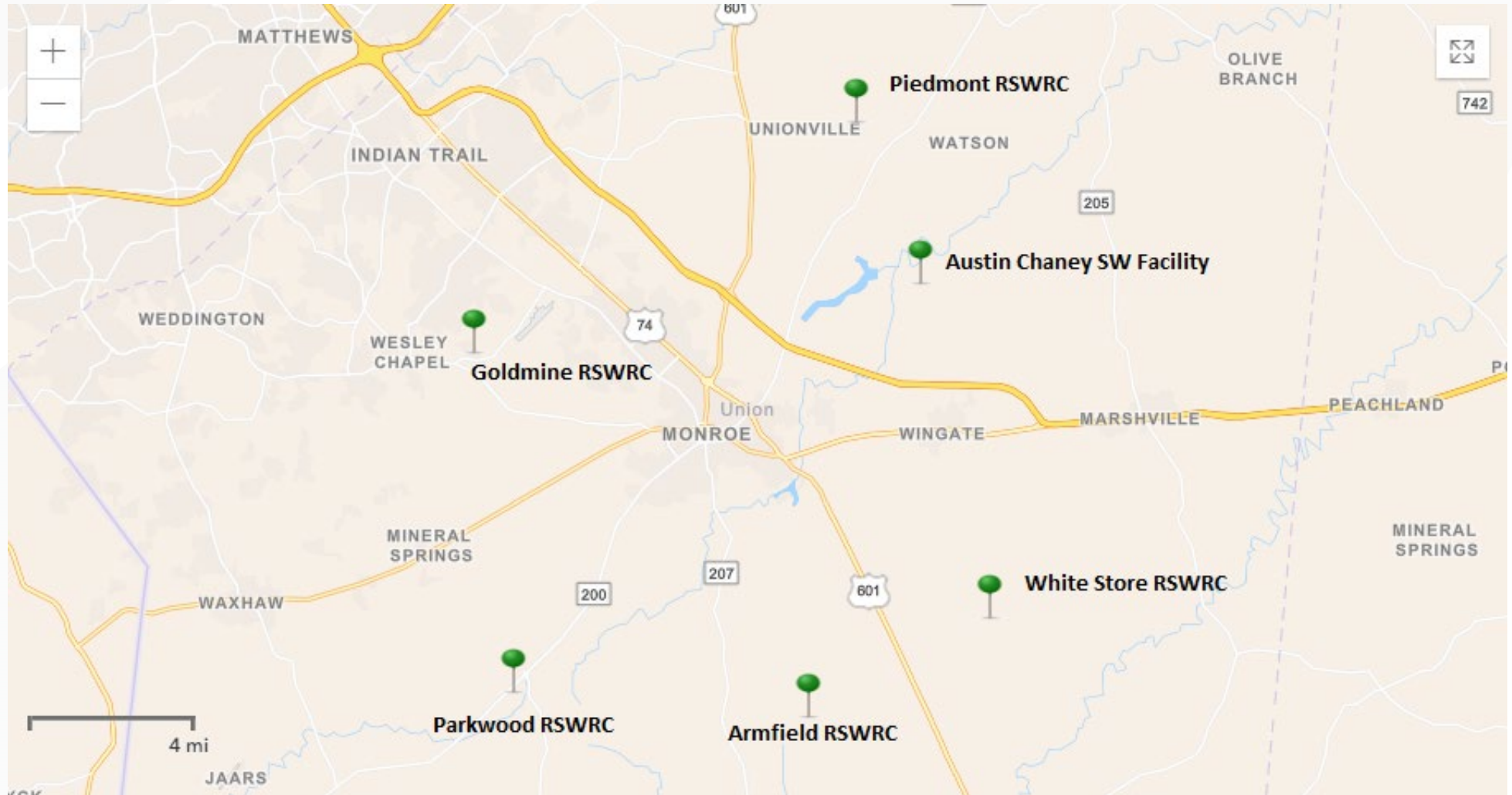
- HHW Collection Events

🌿 Trash Pass

- Cost Free Bagged Waste Disposal



Union County Solid Waste Facilities





Volunteer Organized Events Loaner Litter Kits



Waste and Recycling

Addressing Litter in Our Community

Organize a Litter Collection Event

Curbside Waste and Recycling

Landfill

Residential Waste & Recycling
Centers

Cover Your Load

Trash Pass

[Government](#) » [Departments R-Z](#) » [Waste and Recycling](#) »

Addressing Litter in Our Community

Font Size: + - + [Share & Bookmark](#) [Feedback](#) [Print](#)



CLEAN IT!



BAG IT!



TOSS IT!



COVER IT!



REPORT IT!



MAINTAIN IT!

Litter is an issue that affects everyone. More than just an unsightly nuisance, litter can be a dangerous obstruction for drivers. it is harmful to wildlife. and it can pollute the environment and



Let's Chat

Residential Waste & Recycling Centers (RW&RCs)

- <https://youtu.be/B5zEy4mhJRg>



State of the Union.....Solid Waste

Current:

- C&D Avg. Daily Tons = **343**
- MSW Avg. Daily Tons = **578**

FY 2018:

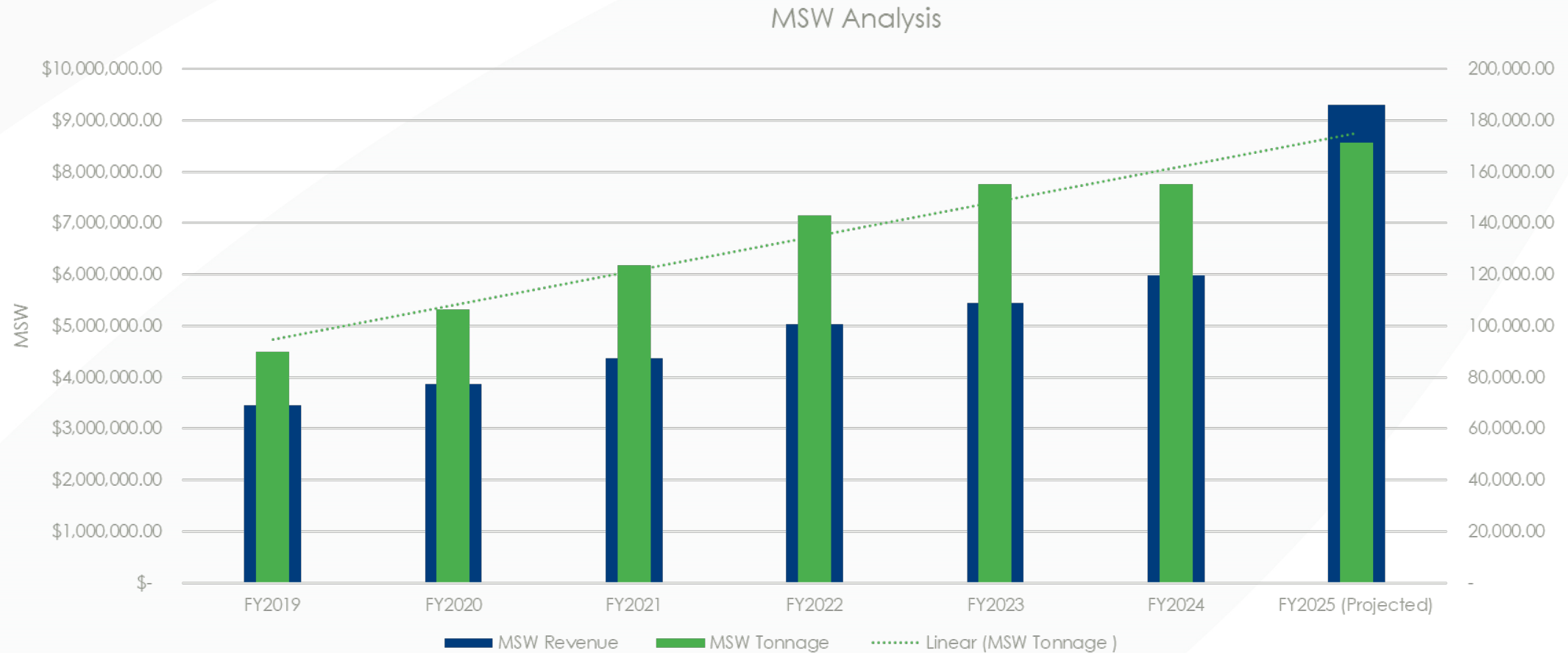
- C&D Avg. Daily Tons = **102**
- MSW Avg. Daily Tons = **243**

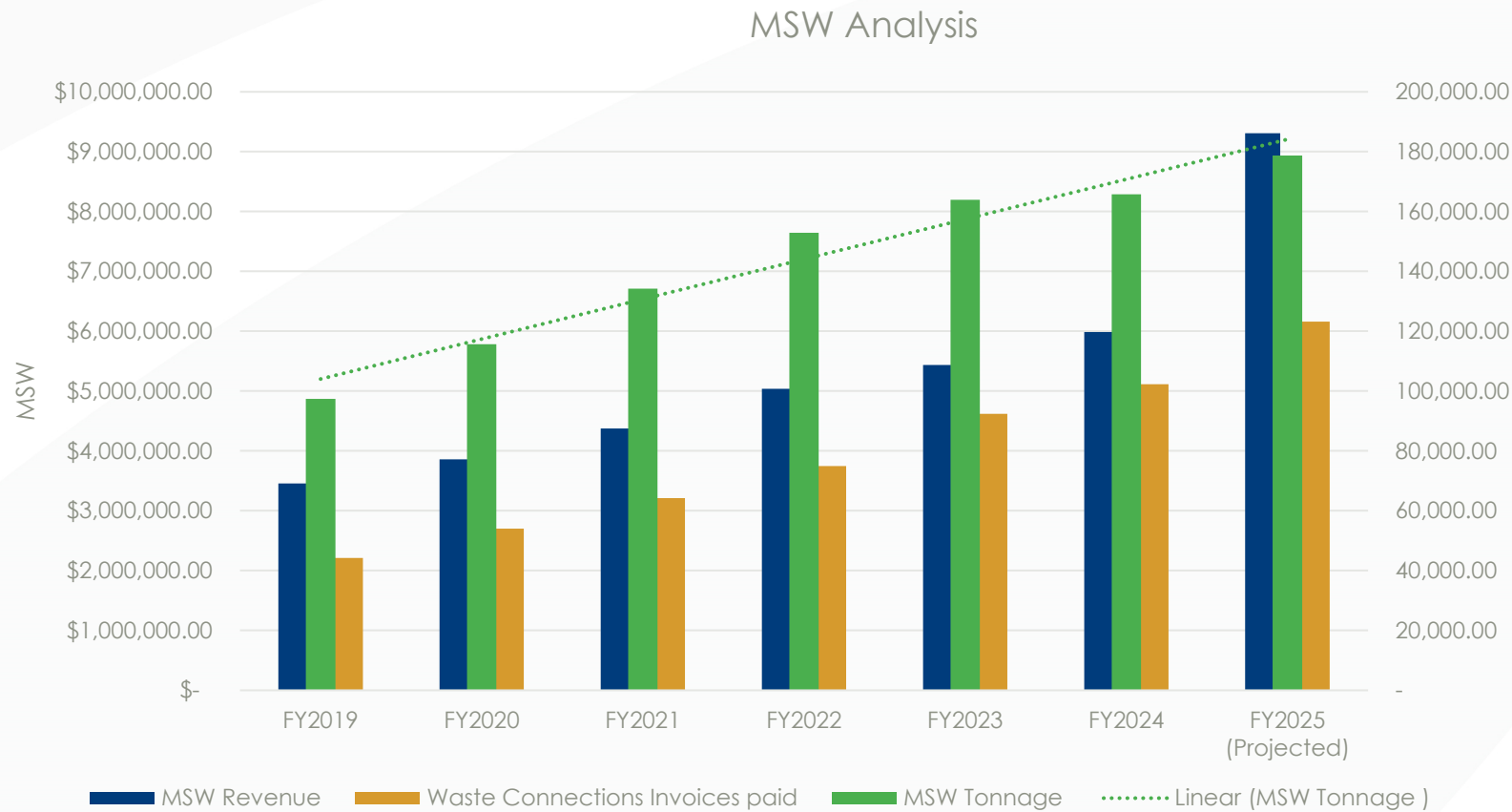
- Total Tons increase=

167%



Commercial MSW:





- In FY25, Solid Waste secured a new contract for T&D and made a rate adjustment for commercial haulers to accommodate costs associated with this contract. We are projecting a more favorable year-end as result of the most recent rate adjustment.

Solid Waste Budget Snapshot

FY 25 Adopted Operating Expenses	FY 25 Adopted Operating Revenues
\$11,453,958	\$13,179,695
FY 25 YTD Operating Expenses	FY25 YTD Operating Revenues
\$6,902,948	\$9,062,109



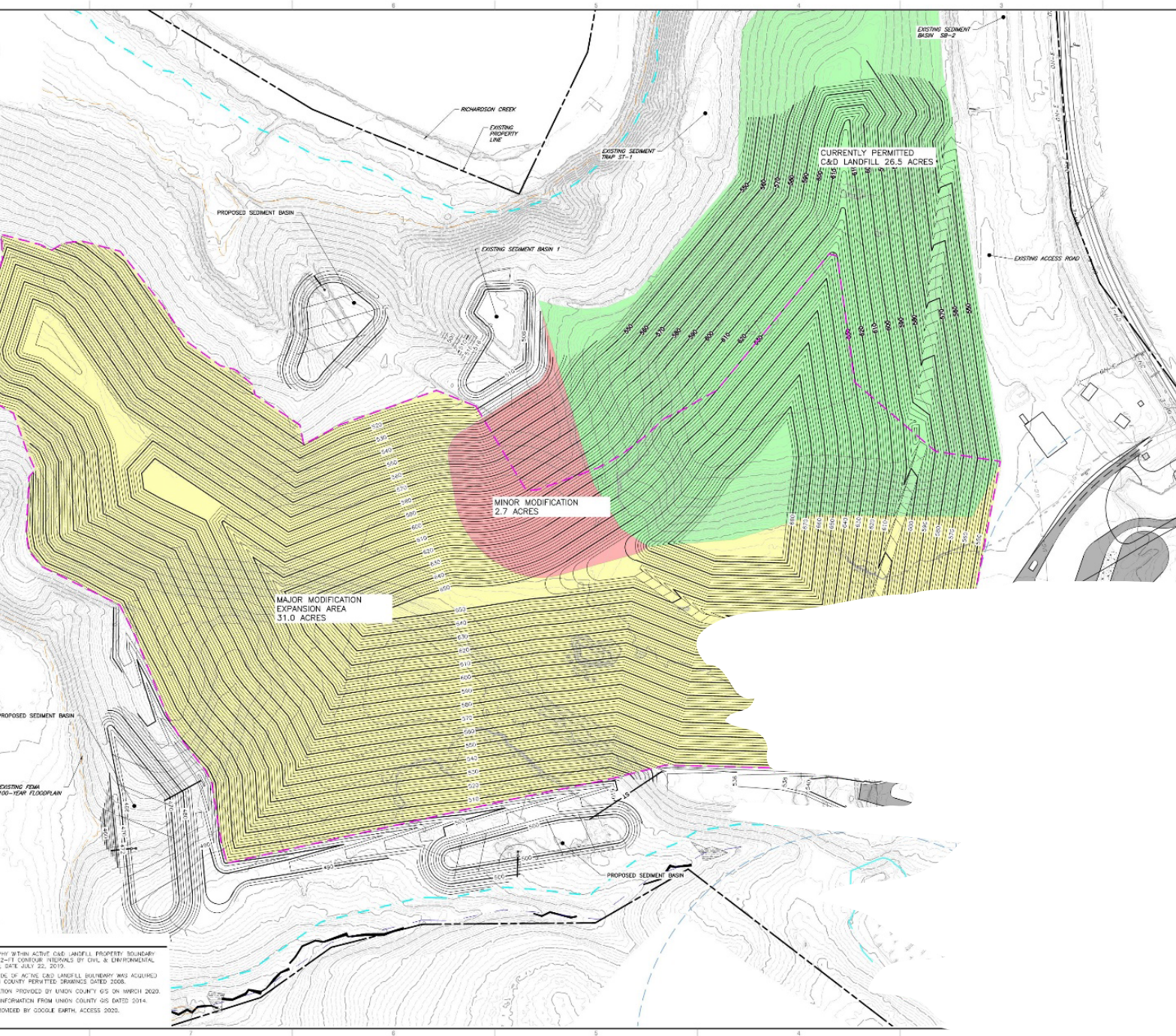
Department	Project Title	Phase	Project Allocation
Solid Waste	Austin Chaney-RWRC	Complete	\$3,668,000
	UC Landfill-C&D Expansion (Phase II)	Current	\$700,000
	Scale-house construction for C&D Expansion (Phase II)	Preliminary Design	\$350,000
	UC Landfill-Access Road Widening	Future	\$125,000
	UC Landfill-Operations Center Building (Phase II)	Preliminary Design	\$3,300,000
	Goldmine Road RWRC Road Paving	Future	\$290,000



Current Capital Projects (CIP) FY26



- Solid Waste Operations Center
- Construction Demolition Phased Landfill Expansion
- Scale-house Construction



Solid Waste Operations Center Project Scope:

Project Name		Project Description			Capital Account
Austin Chaney Operation Center		Design and construct a facility to replace the existing office administrative building. The facility is planned to be a single story building between 5,000 to 6,000 gsf with key features including: nine offices, two showers, two bathrooms,one kitchenette area, one conference room, one MEP room, one storage room, one lobby for dirty entry and one lobby for clean entry.			61287004-5595
Project Budget		Project Partners			
\$3,300,000		UC Solid Waste			
Current Phase					
Design Proposal					
Progress to Completion	Schedule Lead/Lag	Est. Completion Date	Funds Encumbered	Expenses to Date	Building Size
0.0%	0 Wks Lag	9/1/2026	0.0%	0.0%	6,000 gsf

Trash Pass

Learn how to dispose of household trash for free.



UNIONCOUNTY

Satellite (RW&RCs) & Trash Pass



- MSW Disposal Volume Increase: Approx. 13%
- Satellite Centers Operating Cost: \$1,058,751
- General Fund Contribution for Trash Pass: \$650,000
- Projected Operating Deficit: \$408,751

Strategy:

- Eliminate all cash handling at satellite convenience centers
- Set total volume waste disposal limits at satellite convenience centers to the established Trash Pass limits
- Eliminate \$10 Fee for Television Recycling
- Incrementally increase the county General Fund contribution to fully fund the Trash Pass program at \$150,000/yr

Current Disposal Rates:



	Tiers		FY2025
MSW	0-1500 (per ton) 1501-3000 (per ton) > 3001 (per ton)		\$54.00 \$48.00 \$44.00
C&D	0-200 (per ton) 201-400 (per ton) >401-00 (per ton)		\$52.00 \$45.00 \$40.00
Yard Waste	(per ton)		\$45.00
Scrap Tires	(per ton)		\$130.00

Per Ton MSW rate increase

Tier 1 (0-1,500 tons)- **\$54**

Tier 1 - **\$60**

Tier 2 (1,501-3,000 tons) - **\$48**

Tier 3(>3001 tons)- **\$44**



Per Ton C&D rate increase

Tier 1 (0-200 tons)- **\$52**

Tier 1 (0-200 tons)- **\$58**

Tier 2 (201-400 tons)- **\$45**

Tier 2 (0-200 tons)- **\$49**

Tier 3 (401 > tons)- **\$40**



Yard Waste rate Increase

\$45/ton

\$60/ton



Efficiency Goals:

- Enhanced safety for our staff
- Streamline ease of use for facility patrons
- Eliminate high administrative costs associated with satellite convenience center cash handling processes
- Establish all recycling service offerings as cost-free to residents
- Better position the Solid Waste Enterprise Fund for long term success



Thank you



UNIONCOUNTY
north carolina