



NORTH CAROLINA
Department of Transportation

U-6247 Presentation

NCDOT Division of Highways

Division 10

October 2024



Connecting people, products and places safely and efficiently with customer focus, accountability and environmental sensitivity to enhance the economy and vitality of North Carolina

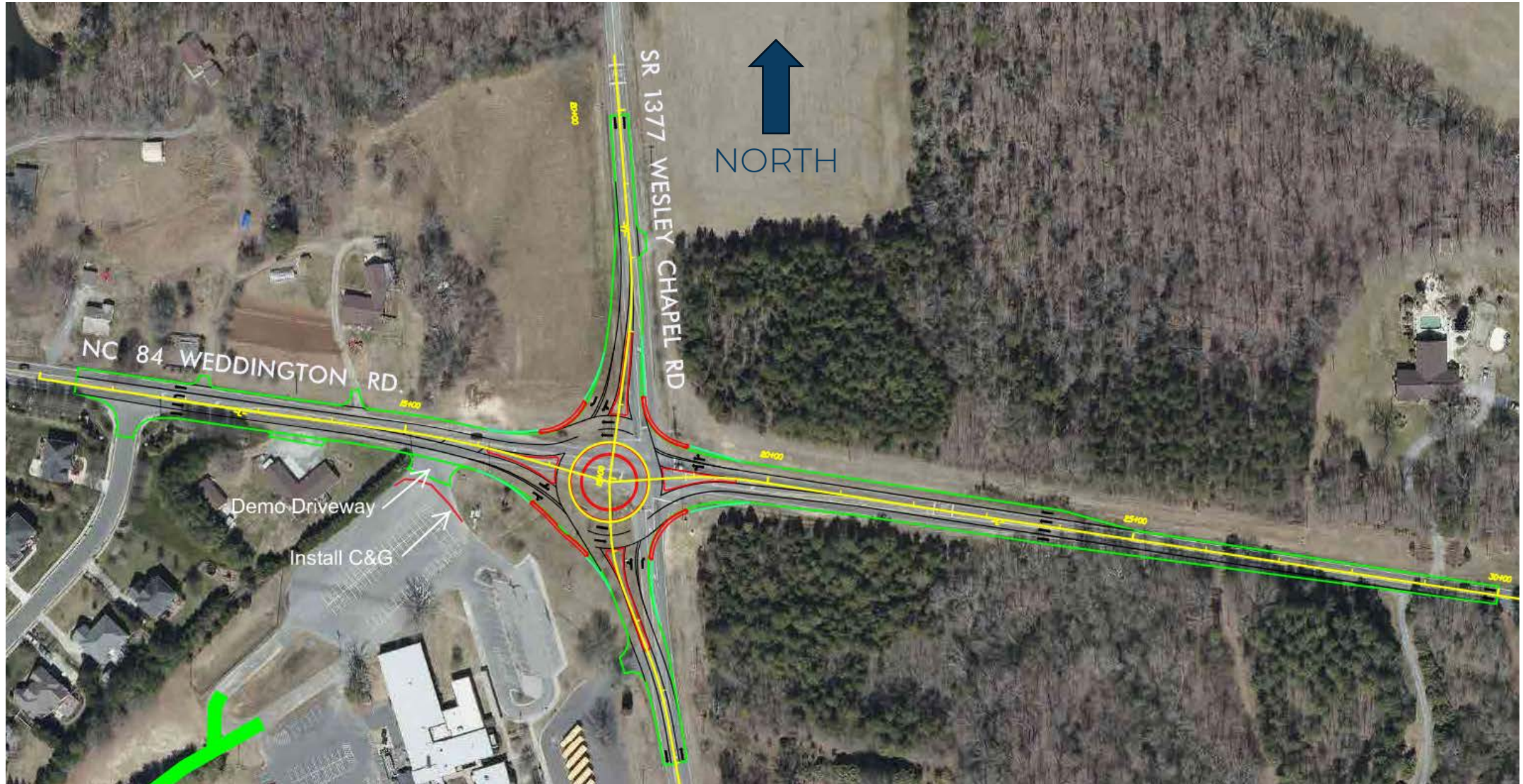
Project Overview & History

- NCDOT was awarded Discretionary (DA) Funds from CRTPO in early 2020 for Intersection Improvements to NC 84 & Potter/Wesley Chapel Rd.
- The local match was to be provided by NCDOT and Union County.
- Union County was working out an agreement with a developer to secure the match funds needed.
- Preliminary engineering funds were authorized in February 2022.

Project Funding

- CRTPO is allocated DA (Discretionary funds) from NCDOT to assign to projects
- NCDOT is unable to increase the DA funds without approval from CRTPO
- DA funds are Federal funds which require a local match
- CRTPO has a scoring methodology in place to rank project submittals
- Since the initial application, CRTPO has added an inflation factor to all applications for funding
- The project was submitted into P7 and had a competitive quantitative score of 48.44 out of 70 and had points assigned by CRTPO and NCDOT
- The P7 funding bucket for this project is the Regional tier which is currently overprogrammed by \$471M (as of 5-17-24) for the next STIP (2026-2035)

Initial Concept



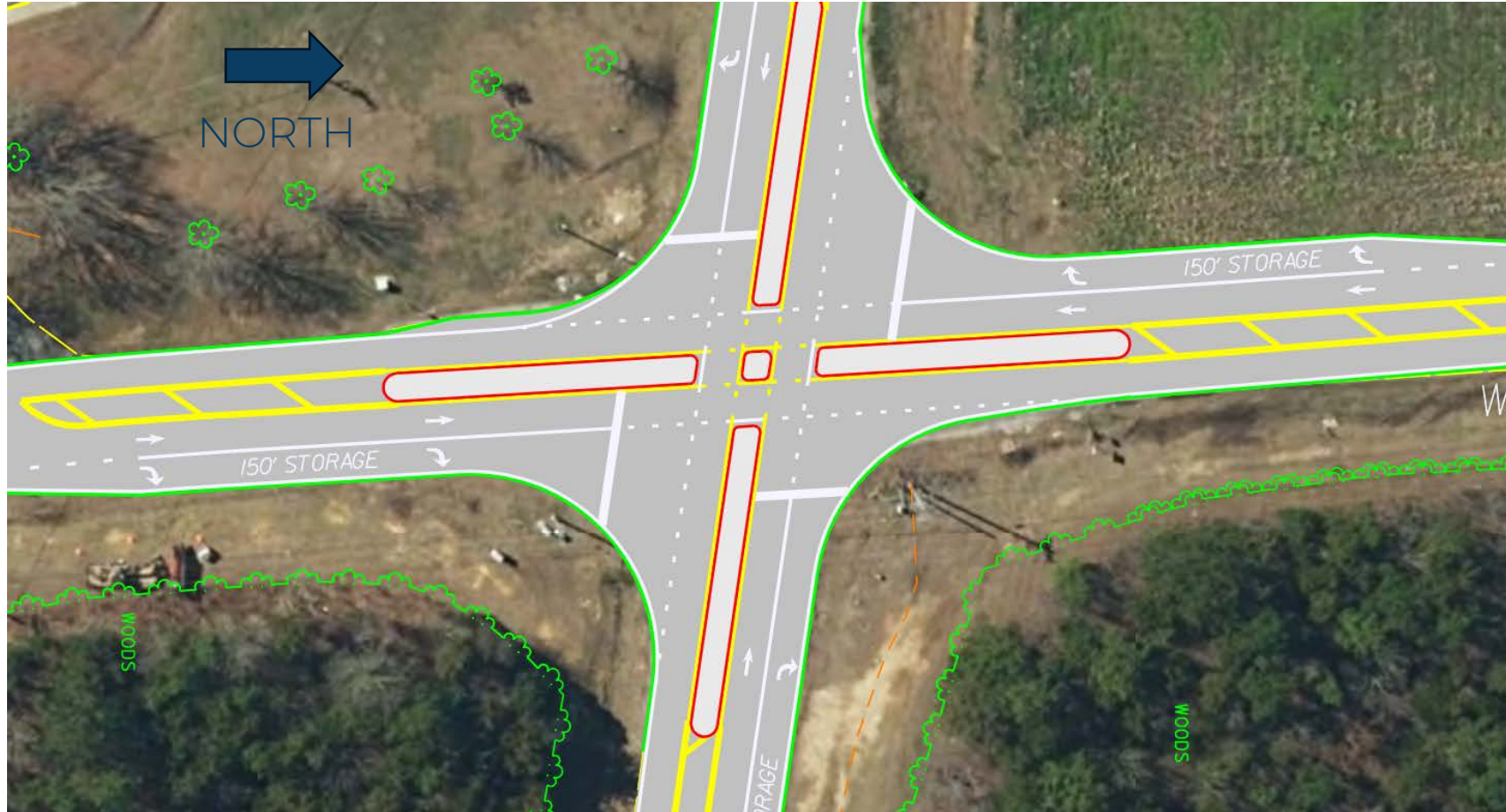
Project History

- Shortly after preliminary engineering began, several large scale developments were approved that would increase traffic volumes at the intersection.
- Traffic analysis showed that the initial concept could not handle the increased traffic volume.
- The developments are too far from the intersection or any entity to require any funding towards the additional improvements required.
- A revised concept that can accommodate the traffic has been developed.

Revised Concept



Revised Concept



Revised Estimate

	Initial Estimate	Revised Base Estimate	Revised Estimate with Contingency & Inflation
Preliminary Engineering	\$507,500	\$500,000	\$751,250
ROW/Utilities	\$377,062	\$800,000	\$1,255,714
Construction	\$2,302,000	\$3,276,860	\$5,376,913
TOTAL	\$3,186,562	\$4,576,860	\$7,383,876

- Project shortfall is \$4,197,315 and the local match percentage is 30%
- The local match amount for the shortfall is \$1,259,194 or \$1.26M
- NCDOT is able to provide \$400k in state safety funds to help with the match
- \$826k is the remaining amount needed for the shortfall match

Contact Us

Sean Epperson, PE

smeperson@ncdot.gov

704-983-4400



 @NCDOT

 NCDOT

 NCDOTcommunications

 @NCDOT

 ncdotcom

 ncdot_comm

Thank you!

