



UNIONCOUNTY

north carolina

2025-CZ-003

TKC Land Rezoning
August 11, 2025



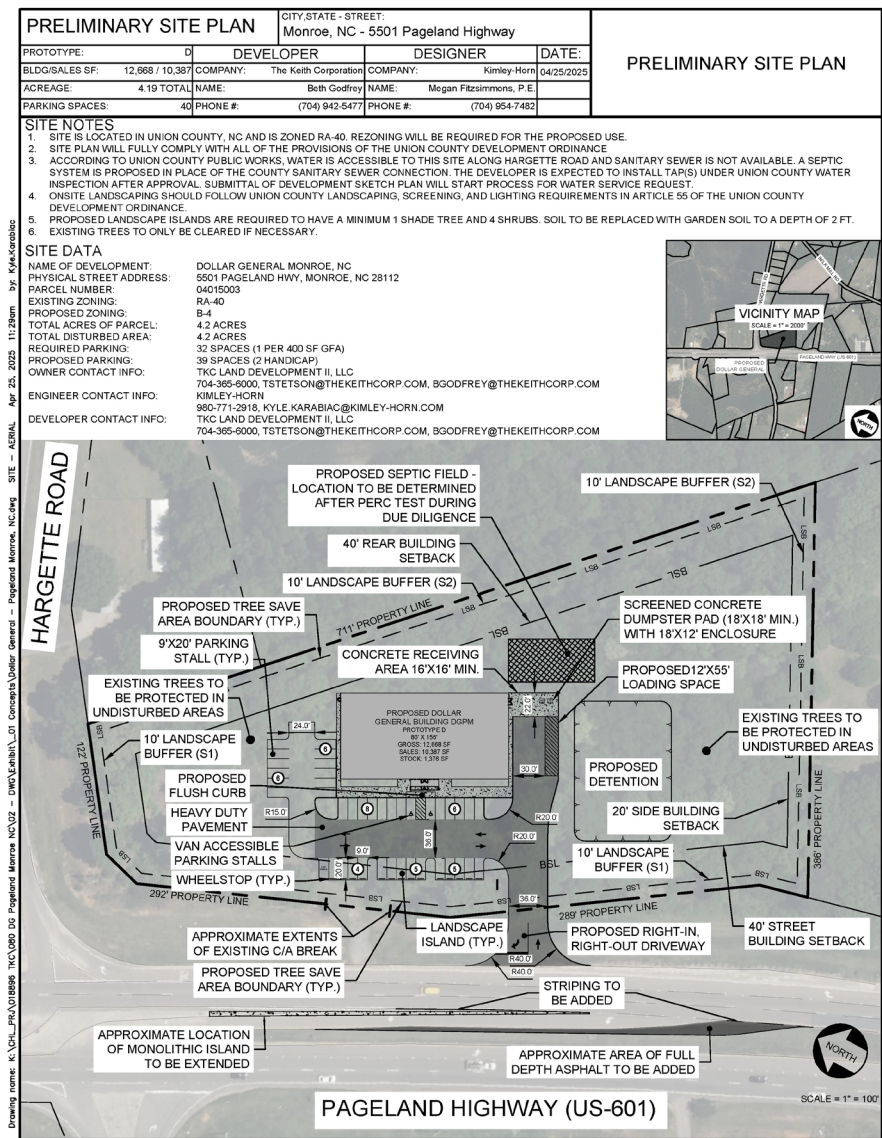
UNIONCOUNTY
north carolina

Request and Conditions

This case is requesting to rezone one parcel totaling 4.204 acres appearing on the tax map as tax parcel 04-015-003 in the Buford Township from RA-40 to B-4 with Conditions. The rezoning will include the following conditions:

1. Limited to site plan dated April 25, 2025
2. Uses limited to retail sales of up to 12,668 square feet of gross floor area
3. Owner will construct improvements to US 601 as required by NCDOT
4. Five-year vesting of development rights
5. Development will meet all requirements of the Union County Unified Development Ordinance as of the date of approval

Site Plan



Existing Conditions



Development Status

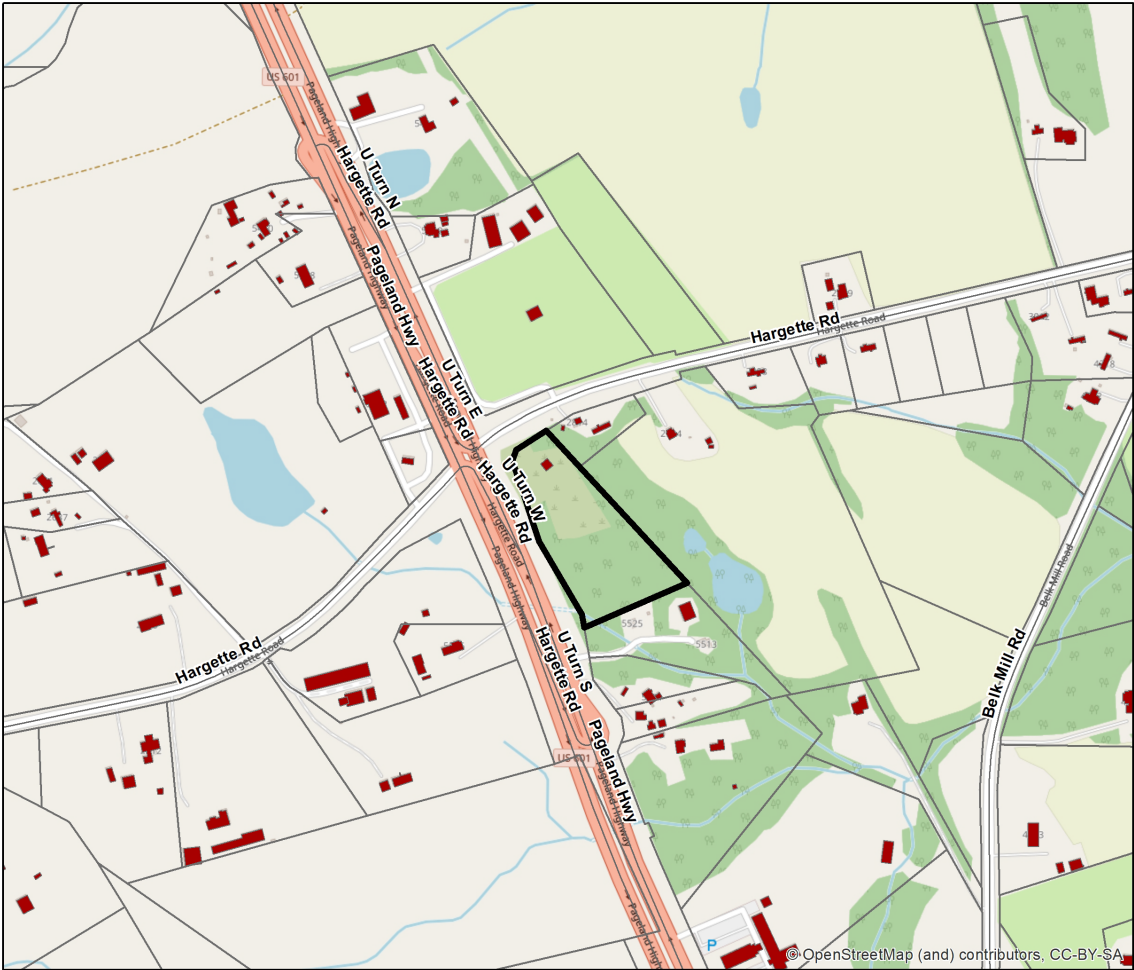
Development Status

Petition: 2025-CZ-003

Name: TKC Land

Size: 4.2 acres

Tax Parcel: 04-015-003



Legend

- Rezoning Parcel
- Structures 2023

Data Disclaimer
The purpose of the Union County GIS Department includes maintaining geographical information about Union County in electronic format. Please note that inadvertent errors can occur, and information provided by this Department is not intended to replace any official source of information such as recorded deeds, plats, and other public records and data. This information is presented "as is" and without warranties, either express or implied. Users are advised that their use of any County data is at their own risk. The user agrees that Union County shall be held harmless from all actions, claims, damages or judgments arising out of the use of data obtained from the Union County GIS Department. Certain data provided by this Department is maintained by third parties over whom Union County has no control. As such, Union County makes no representation as to the accuracy, appropriateness or any other aspect of information provided by this Department.

Map Disclaimer
This map is prepared for the representation of property found within Union County, NC and is compiled from recorded deeds, plats, and other public records and data. Users of this map are hereby notified that the aforementioned public primary information sources should be consulted for verification of the information contained on this map. Union County and the mapping companies assume no legal responsibilities for the information contained on this map. Users are advised that their use of this map is at their own risk. The user agrees that Union County shall be held harmless from all actions, claims, damages or judgments arising out of the use of this map. Certain data used to create this map is maintained by third parties over whom Union County has no control, and Union County makes no representation as to the accuracy, appropriateness, or any other aspect of this map.



0 250 500 1,000 Feet

Created on February 20, 2025 by Bjorn E. Hansen, AICP CTP.
Contact: (704) 283-3690 or bjorn.hansen@unioncountync.gov

Environmental Features

Environmental Features

Petition: 2025-CZ-003

Name: TKC Land

Size: 4.2 acres

Tax Parcel: 04-015-003

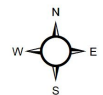


Legend

- Rezoning Parcel
- Streams
- Wetlands Areas
- 500 Year Flood Plain

Data Disclaimer
The purpose of the Union County GIS Department includes maintaining geographical information about Union County in electronic format. Please note that inadvertent errors can occur, and information provided by this Department is not intended to replace any official source of information such as recorded deeds, plats, and other public records and data. This information is presented "as is" and without warranties, either express or implied. Users are advised that their use of any County data is at their own risk. The user agrees that Union County shall be held harmless from all actions, claims, damages or judgments arising out of the use of data obtained from the Union County GIS Department. Certain data provided by this Department is maintained by third parties over whom Union County has no control. As such, Union County makes no representation as to the accuracy, appropriateness or any other aspect of information provided by this Department.

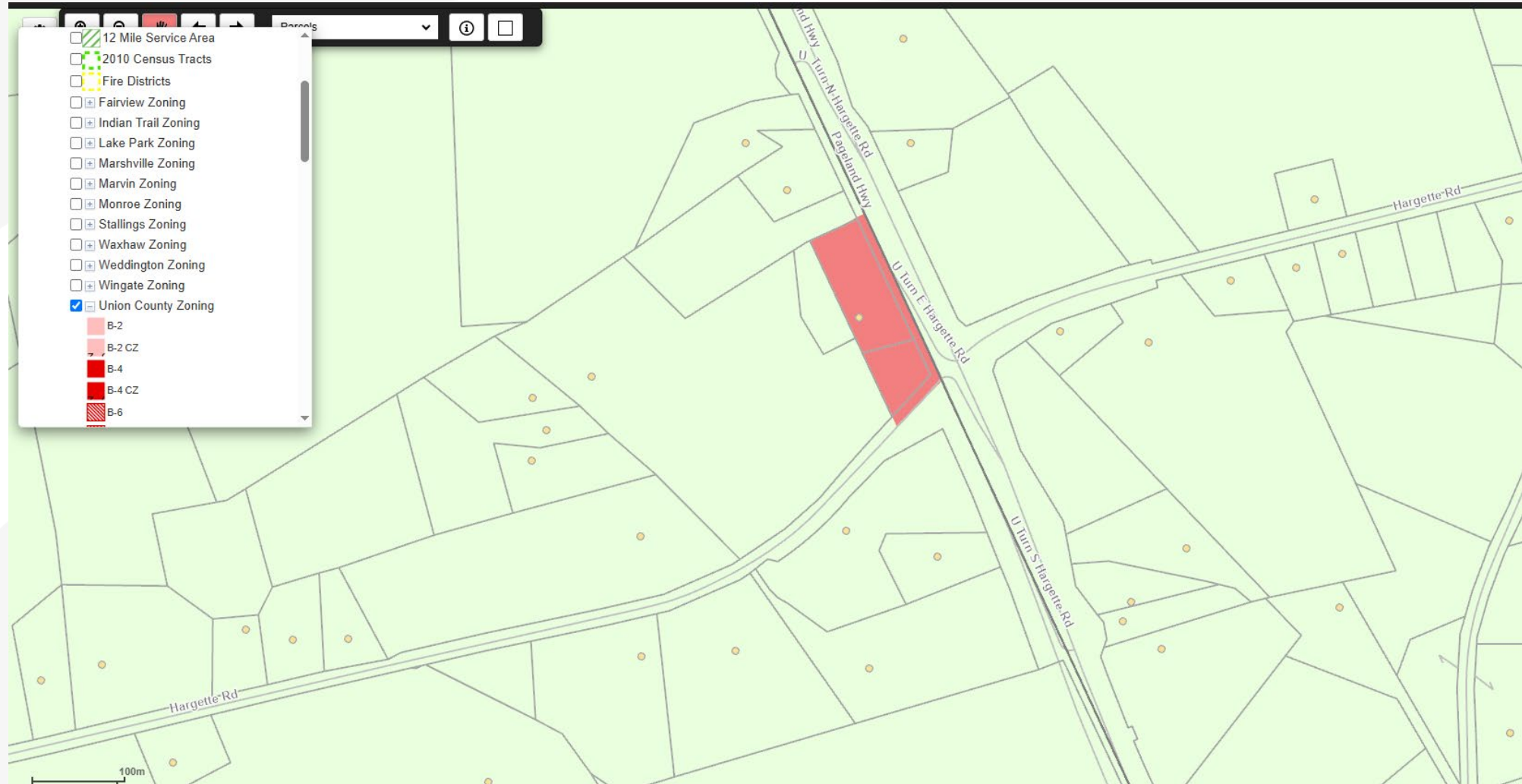
Map Disclaimer
This map is prepared for the representation of property found within Union County, NC and is compiled from recorded deeds, plats, and other public records and data. Users of this map are hereby notified that the aforementioned public primary information sources should be consulted for verification of the information contained on this map. Union County and the mapping companies assume no legal responsibilities for the information contained on this map. Users are advised that their use of this map is at their own risk. The user agrees that Union County shall be held harmless from all actions, claims, damages or judgments arising out of the use of this map. Certain data used to create this map is maintained by third parties over whom Union County has no control, and Union County makes no representation as to the accuracy, appropriateness, or any other aspect of this map.



0 250 500 1,000 Feet

Created on February 20, 2025 by Bjorn E. Hansen, AICP CTP.
Contact: (704) 283-3690 or bjorn.hansen@unioncountync.gov

Zoning



Transportation

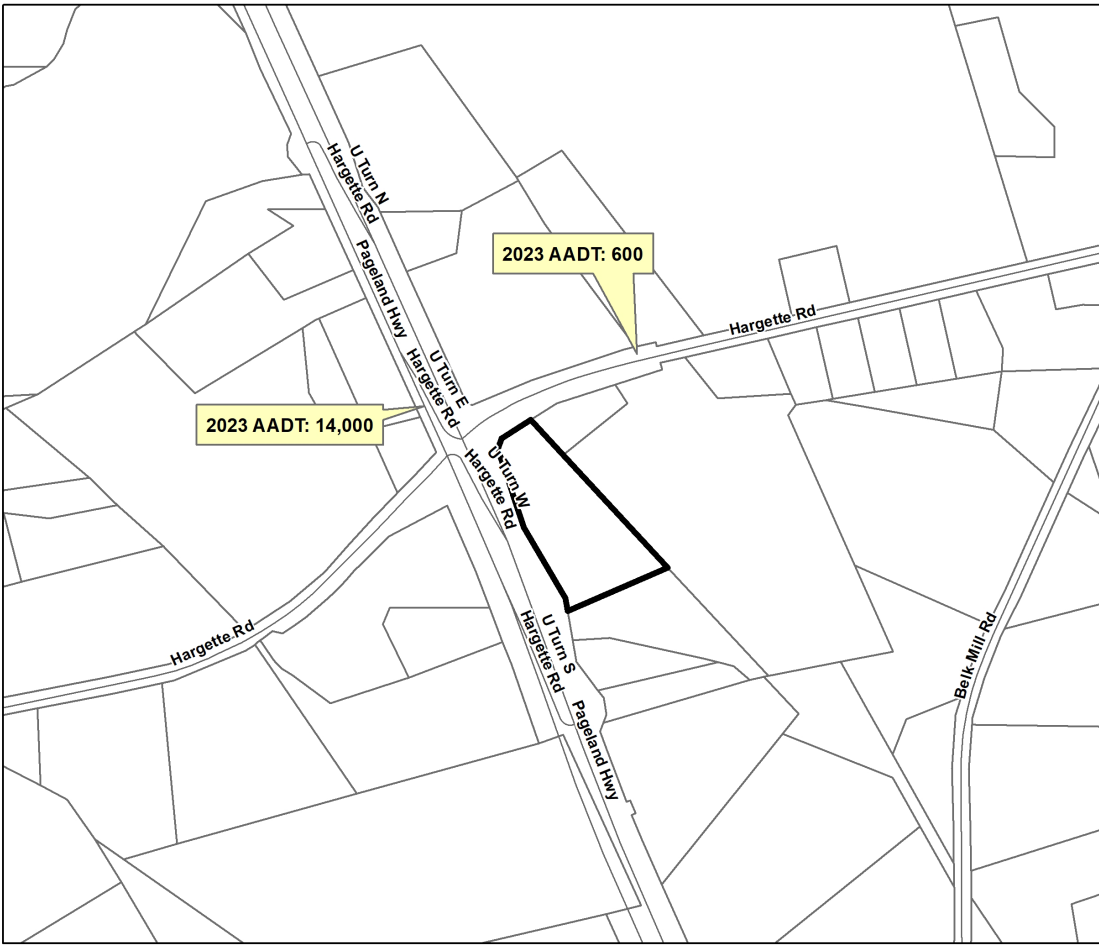
Transportation

Petition: 2025-CZ-003


Name: TKC Land

Size: 4.2 acres

Tax Parcel: 04-015-003



Legend

 Rezoning Parcel

Data Disclaimer
The purpose of the Union County GIS Department includes maintaining geographical information about Union County in electronic format. Please note that inadvertent errors can occur, and information provided by this Department is not intended to replace any official source of information such as recorded deeds, plats, and other public records and data. This information is presented "as is" and without warranties, either express or implied. Users are advised that their use of any County data is at their own risk. The user agrees that Union County shall be held harmless from all actions, claims, damages or judgments arising out of the use of data obtained from the Union County GIS Department. Certain data provided by this Department is maintained by third parties over whom Union County has no control. As such, Union County makes no representation as to the accuracy, appropriateness or any other aspect of information provided by this Department.

Map Disclaimer
This map is prepared for the representation of property found within Union County, NC and is compiled from recorded deeds, plats, and other public records and data. Users of this map are hereby notified that the aforementioned public primary information sources should be consulted for verification of the information contained on this map. Union County and the mapping companies assume no legal responsibilities for the information contained on this map. Users are advised that their use of this map is at their own risk. The user agrees that Union County shall be held harmless from all actions, claims, damages or judgments arising out of the use of this map. Certain data used to create this map is maintained by third parties over whom Union County has no control, and Union County makes no representation as to the accuracy, appropriateness, or any other aspect of this map.



0 250 500 1,000 Feet

Created on February 20, 2025 by Bjorn E. Hansen, AICP CTP.
Contact: (704) 283-3690 or bjorn.hansen@unioncountync.gov

Land Use Map

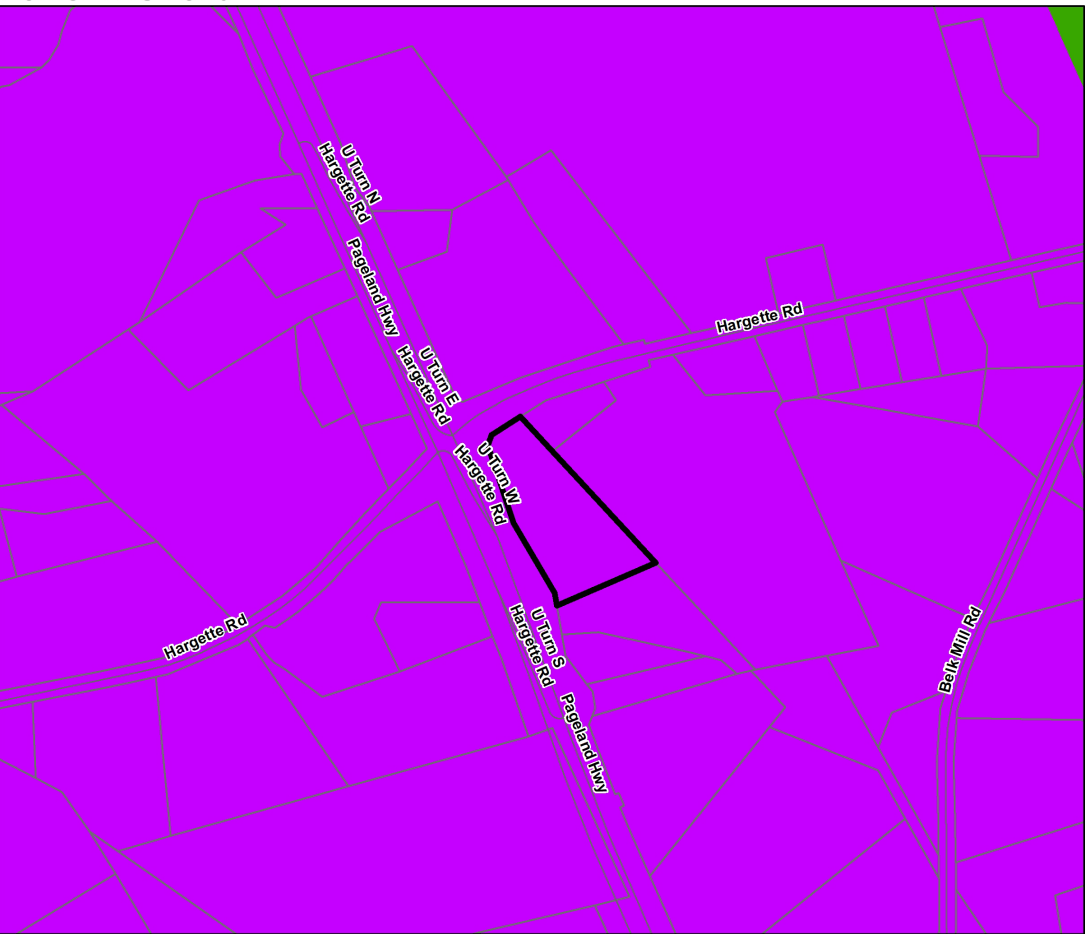
Land Use Map

Petition: 2025-CZ-003

Name: TKC Land

Size: 4.2 acres

Tax Parcel: 04-015-003



Legend

- Rezoning Parcel
- Employment Corridor
- Rural Residential

Data Disclaimer
The purpose of the Union County GIS Department includes maintaining geographical information about Union County in electronic format. Please note that inadvertent errors can occur, and information provided by this Department is not intended to replace any official source of information such as recorded deeds, plats, and other public records and data. This information is presented "as is" and without warranties, either express or implied. Users are advised that their use of any County data is at their own risk. The user agrees that Union County shall be held harmless from all actions, claims, damages or judgments arising out of the use of data obtained from the Union County GIS Department. Certain data provided by this Department is maintained by third parties over whom Union County has no control. As such, Union County makes no representation as to the accuracy, appropriateness or any other aspect of information provided by this Department.

Map Disclaimer
This map is prepared for the representation of property found within Union County, NC and is compiled from recorded deeds, plats, and other public records and data. Users of this map are hereby notified that the aforementioned public primary information sources should be consulted for verification of the information contained on this map. Union County and the mapping companies assume no legal responsibilities for the information contained on this map. Users are advised that their use of this map is at their own risk. The user agrees that Union County shall be held harmless from all actions, claims, damages or judgments arising out of the use of this map. Certain data used to create this map is maintained by third parties over whom Union County has no control, and Union County makes no representation as to the accuracy, appropriateness, or any other aspect of this map.



Created on February 20, 2025 by Bjorn E. Hansen, AICP CTP.
Contact: (704) 283-3690 or bjorn.hansen@unioncountync.gov

Schools

- Because this rezoning request is commercial, UCPS was not consulted for comments.

Utilities

- Public water is available to the site. The site would utilize septic service.

Public Feedback

- A community meeting was held May 28, 2025. One resident attended and was supportive of the project. No changes were made to the site plan as a result of this meeting.
- No one spoke at June LUB meeting.
- No one spoke at July public hearing.

Municipal Feedback

- Monroe was not consulted for comments.

Staff Report and Recommendation

NEGATIVES OF PROPOSAL

- The Plan's Land Use Map identifies this area as an Employment Corridor and such areas should be preserved for industrial and other recommended uses. While a variety of employment uses are noted as consistent with an Employment Corridor, the Plan specifically identifies such uses to include distribution, aeronautics, industrial, and agri-business uses. The retail type of use contemplated here is too different from the uses set forth in the Plan as contemplated in an Employment Corridor.
- Continued and future allowed commercial and retail uses along the corridor could result in increased congestion on the roads and streets adjacent and nearby to the property. Traffic congestion is a noted concern in the Plan.

POSITIVES OF PROPOSAL

- The Plan's Land Use Map identifies this area as Rural Residential with an Employment Corridor overlay. The Plan provides that a variety of employment uses may be appropriate along these corridors. Dependent on location and adjacent facilities, the Plan sets forth that development uses that may be appropriate include distribution, logistics, aeronautics, industrial and agri-business. Retail uses, while not specifically listed in the non-exhaustive list of potential uses in the Employment Corridor overlay, would be complementary with other employment uses and consistent with the uses contemplated in an Employment Corridor in the Plan.
- The parcel fronts two roads, meaning a commercial use would be appropriate considering traffic noise and buffering.
- There is an existing commercial use at this intersection, making another commercial use consistent with an established use in the immediate area.
- The use set forth under the conditions would meet Union County development standards.

STAFF RECOMMENDATION: APPROVAL

PLANNING BOARD RECOMMENDATION: APPROVAL on a unanimous vote

Questions



UNIONCOUNTY
north carolina